

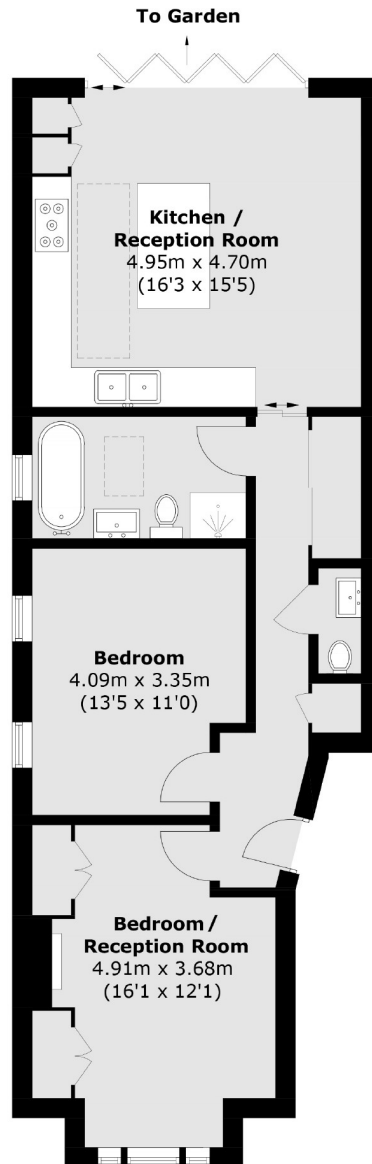


Byrne Road, SW12

£725,000

A stunning two double bedroom, Victorian Conversion flat located in Central Balham. The property features an open plan kitchen / reception room with bi-folding doors leading out onto a beautiful south facing garden.

- Two Double Bedrooms
- Open Plan Kitchen/Reception
- Separate WC
- South Facing Private Garden
- Victorian Conversion
- Central Balham Location



Total area (approx.): 73.09 sq. m (787 sq. ft)

Jacksons Balham
8-11 Balham Station Road
London
SW12 9SG
020 8675 6555
balham.sales@jacksonsestateagents.com

Energy Rating: C We aim to make our particulars both accurate and reliable. However they are not guaranteed; nor do they form part of an offer or contract. If you require clarification on any points then please contact us, especially if you're traveling some distance to view. Please note that appliances and heating systems have not been tested and therefore no warranties can be given as to their good working order.