



Fieldhouse Road, SW12

£900,000

A beautifully presented three double bedroom split level Victorian Maisonette with a private South West facing garden located in the highly regarded Hyde Farm Estate in Balham.

- Three Double Bedrooms
- Two Bathrooms
- Victorian Maisonette
- Share Of Freehold
- Hyde Farm Estate
- Private South West Facing Garden

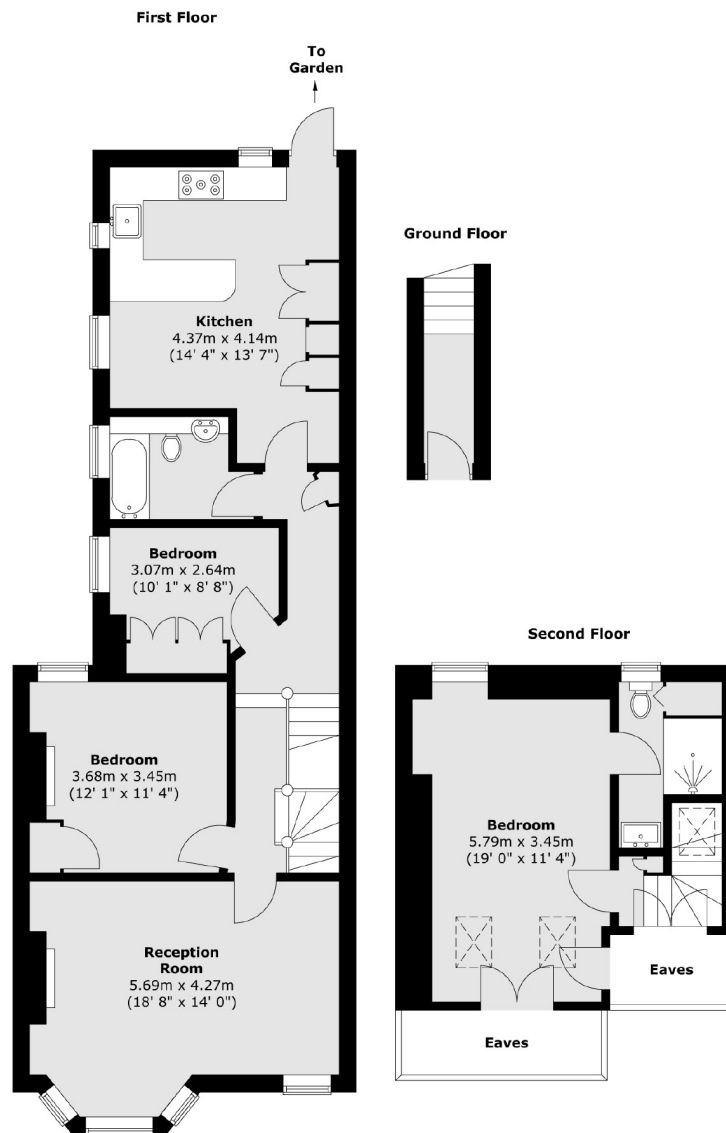


The property features a spacious reception room, separate eat-in kitchen with a door leading down to the private South West facing garden. Additionally, the lovely green open spaces of Tooting Bec Common lie moments away at the end of the road.

Located on Fieldhouse Road in the Hyde Farm area it is well situated for easy access to Balham. The north side of Tooting Bec Common lies just moments away at the end of the road and the shops, bars, restaurants and supermarkets local to the area are within easy reach.







Total area (approx.) : 113.4 sq. m (1220 sq. ft)
(Excluding Eaves)

Jacksons Balham
8-11 Balham Station Road
London
SW12 9SG
020 8675 6555
balham.sales@jacksonsestateagents.com

Energy Rating: C We aim to make our particulars both accurate and reliable. However they are not guaranteed; nor do they form part of an offer or contract. If you require clarification on any points then please contact us, especially if you're traveling some distance to view. Please note that appliances and heating systems have not been tested and therefore no warranties can be given as to their good working order.