



Rossiter Road, SW12

£950,000

Located in the heart of Balham is this unique, three bedroom, split level flat. The property benefits from having it's own private garden and has been finished to an exceptional standard throughout.

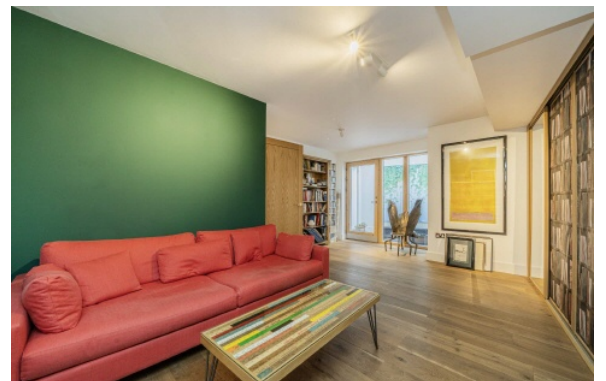
- Three Double Bedrooms
- Split Level Flat
- Private Garden
- Modern Finish
- Open Plan
- Central Balham



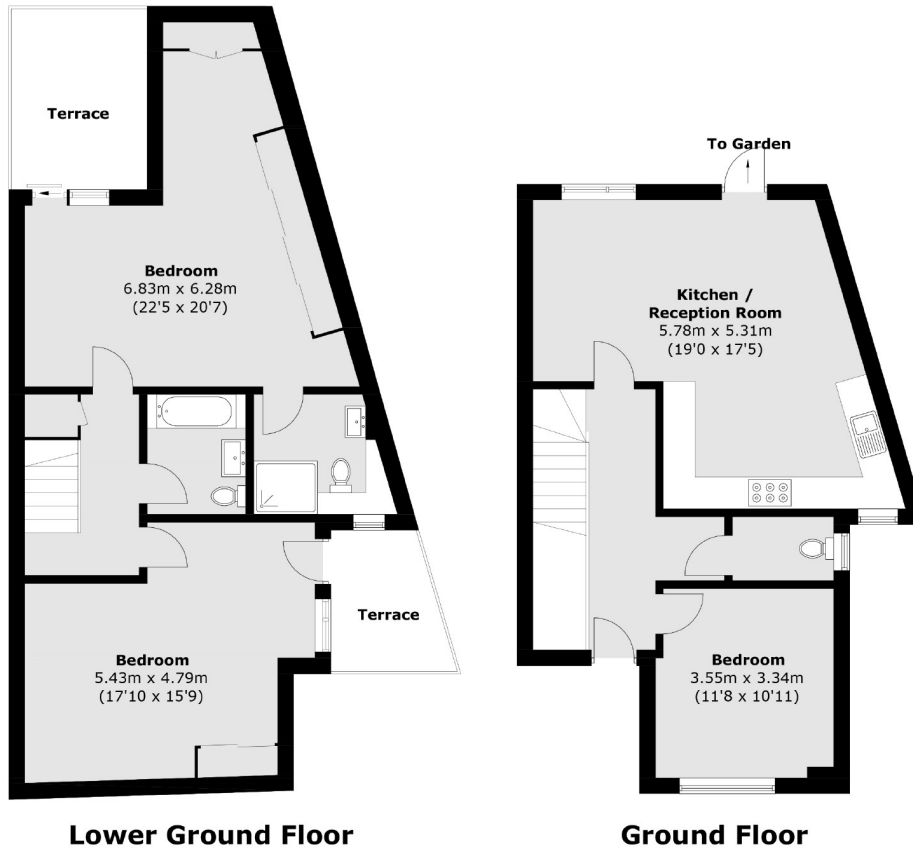
The ground floor offers a large open plan kitchen/reception room, with ample space for dining, and doors leading out onto a private garden. There is also a double bedroom and a separate cloakroom.

The lower ground floor has two generous double bedrooms, each with extensive built in storage. The master bedroom offers an ensuite bathroom and access to a private terrace. The second double bedroom has a feature lightwell.

Rossiter Road is a popular residential road and is within close proximity to Balham Station and the vast array of shops, bars and restaurants local to the area. Tooting Bec common is also within easy reach.







Total area (approx.): 127.9 sq. m (1,376.7 sq. ft)
Terrace area (approx.): 13.9 sq. m (149.6 sq. ft)

Jacksons Balham
8-11 Balham Station Road
London
SW12 9SG
020 8675 6555
balham.sales@jacksonsestateagents.com

Energy Rating: B We aim to make our particulars both accurate and reliable. However they are not guaranteed; nor do they form part of an offer or contract. If you require clarification on any points then please contact us, especially if you're traveling some distance to view. Please note that appliances and heating systems have not been tested and therefore no warranties can be given as to their good working order.