

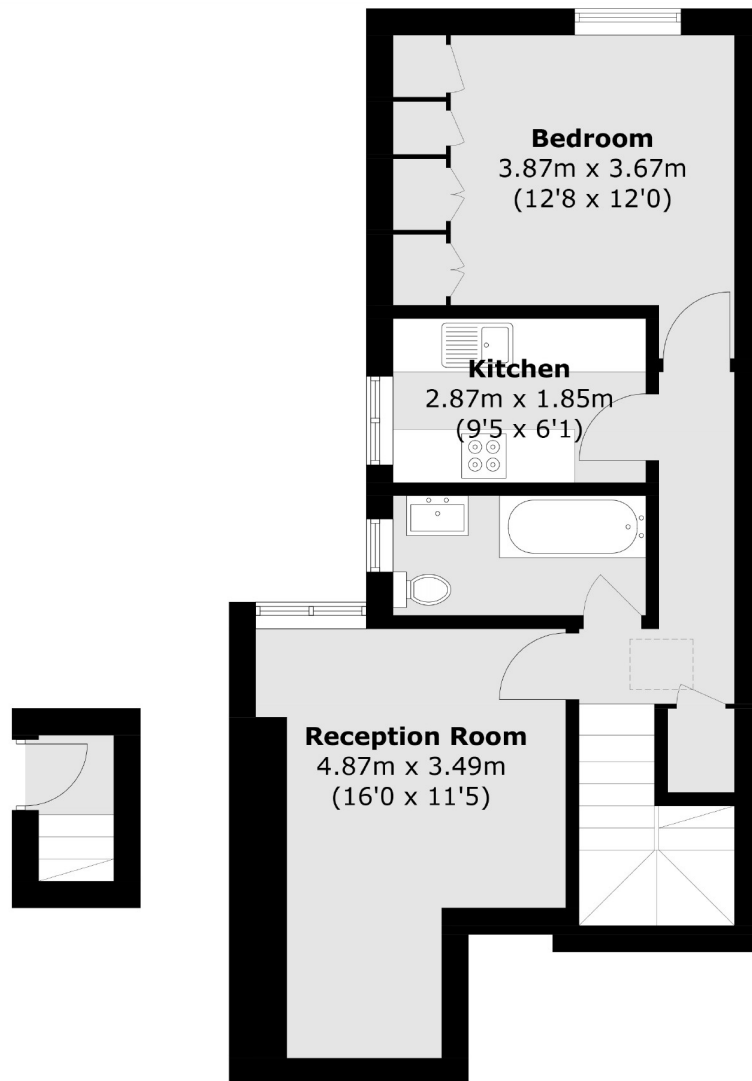


## Louisville Road, SW17

£400,000

An immaculate example of a top floor period conversion on the Heaver estate, with the tube, common and high street all within easy access.

- Period Conversion
- One Bed
- Heaver Estate
- Next To Common
- Excellent Condition
- No Chain

**First Floor****Second Floor**

Total area (approx.): 48.2 sq. m (518.8 sq. ft)

Jacksons Balham  
8-11 Balham Station Road  
London  
SW12 9SG  
020 8675 6555  
balham.sales@jacksonsstateagents.com

Energy Rating: D We aim to make our particulars both accurate and reliable. However they are not guaranteed; nor do they form part of an offer or contract. If you require clarification on any points then please contact us, especially if you're traveling some distance to view. Please note that appliances and heating systems have not been tested and therefore no warranties can be given as to their good working order.