



Airedale Road, SW12

£2,000,000

A fantastic opportunity to purchase a beautifully presented five bedroom family home, spanning almost 2600sqft situated in the highly desirable Nightingale Triangle.

- Victorian Family Home
- Five Double Bedrooms
- Two Bathrooms/Shower Room
- Close to 2600sqft
- Beautifully Presented
- Nightingale Triangle



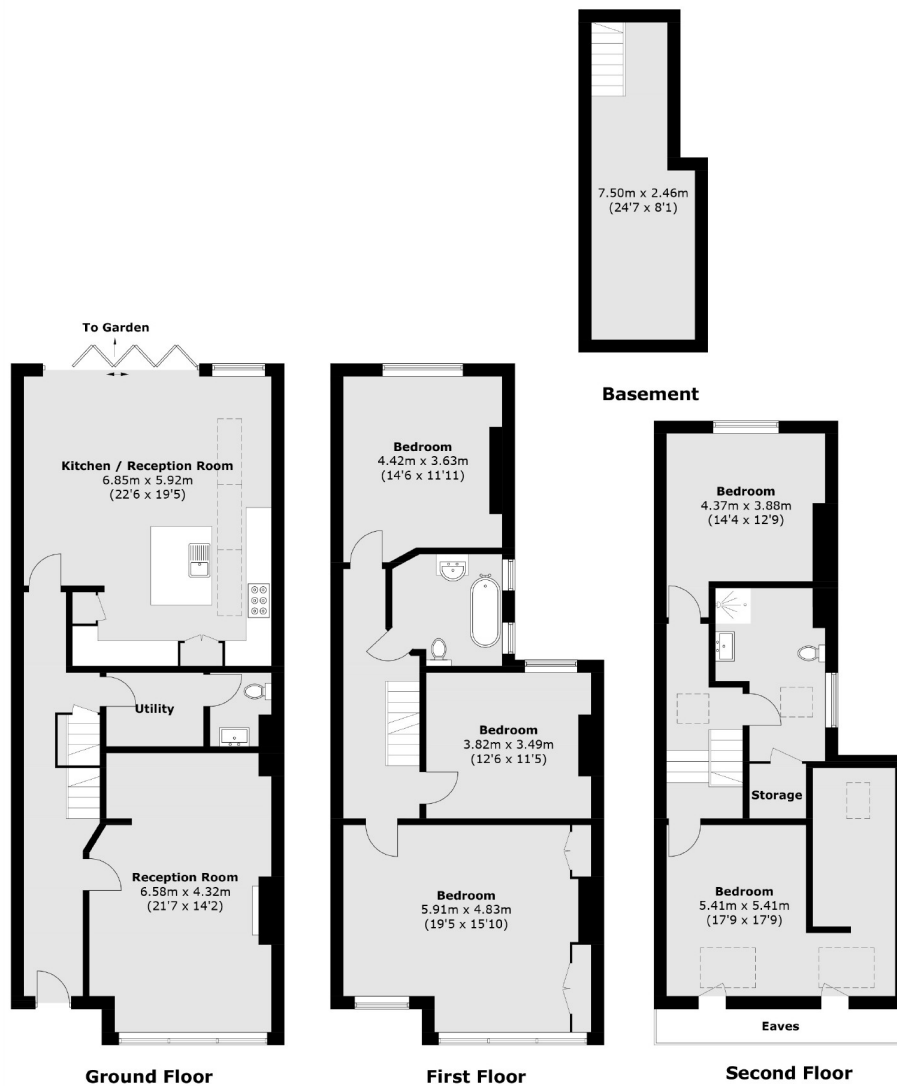
This fabulous Victorian property offers a larger than average reception room, a guest wc and utility room and a large extended kitchen/dining room with bi-folding doors leading out to a delightful garden. The first floor comprises three large double bedrooms and a family bathroom and the second floor offers two further double bedrooms and another shower room. This fabulous home also has a cellar which is great for storage or potential further conversion work, subject to the usual planning consents.



Airedale Road sits in the Nightingale Triangle and is moments from both Balham and Wandsworth Common where there are a plethora of shops, bars, restaurants and supermarkets on offer. Balham mainline and underground stations are within close proximity and Wandsworth Common Station and Bellevue Road are also within easy reach.







Total area (approx.): 238.5 sq. m (2,567.2 sq. ft)
(Excluding Eaves)

Jacksons Balham
8-11 Balham Station Road
London
SW12 9SG
020 8675 6555
balham.sales@jacksonsestateagents.com

Energy Rating: D We aim to make our particulars both accurate and reliable. However they are not guaranteed; nor do they form part of an offer or contract. If you require clarification on any points then please contact us, especially if you're traveling some distance to view. Please note that appliances and heating systems have not been tested and therefore no warranties can be given as to their good working order.