



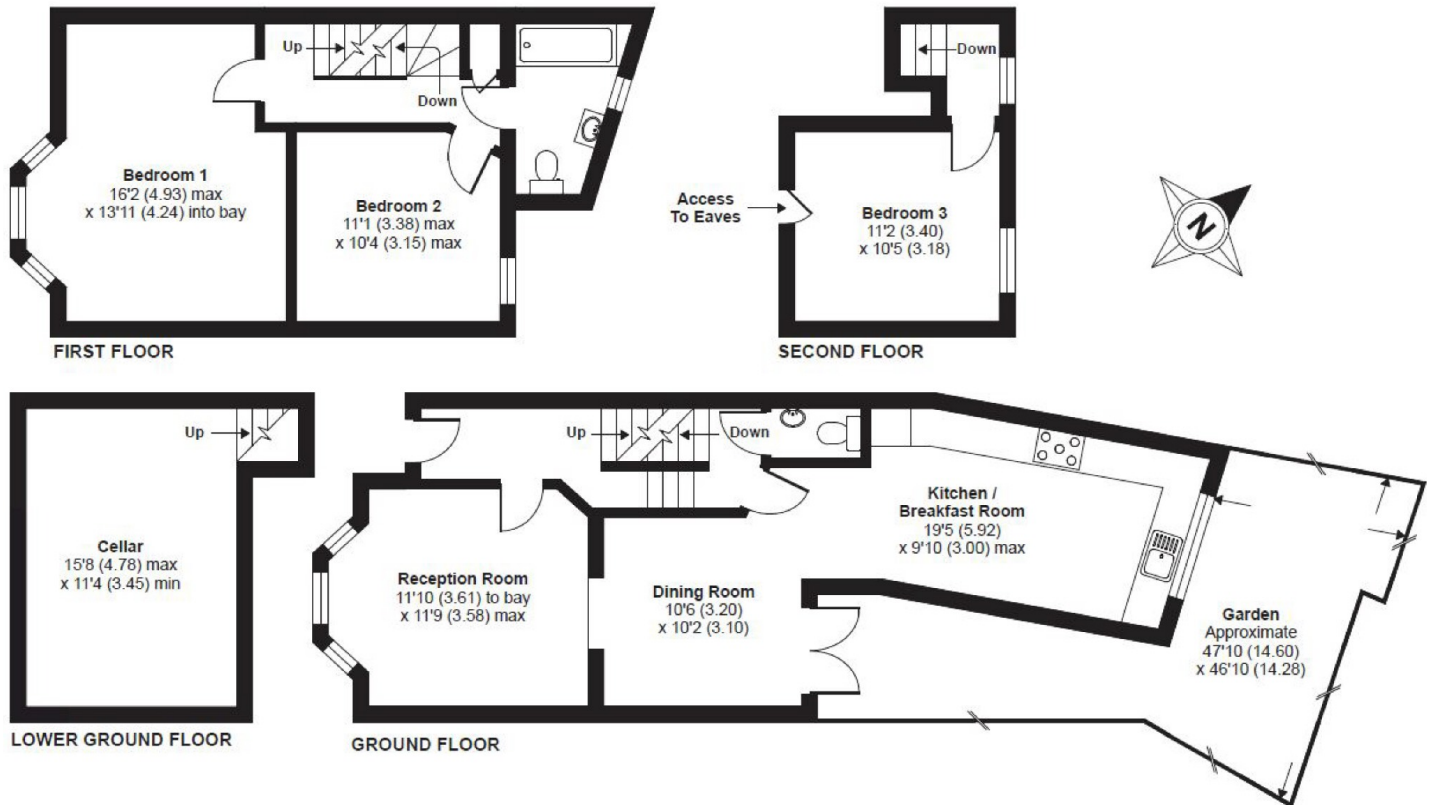
## Chestnut Grove, SW12

£3,000 PCM

A three bedroom terraced house with a garden. This property would be ideal for a family or professional sharers.

- Terraced House
- Reception Room
- Kitchen Breakfast Room
- Three Double Bedrooms
- Two Bathrooms
- Private Garden

For further information on the costs associated with renting a property, please pop into our office or visit our website.



APPROX. GROSS INTERNAL FLOOR AREA 1333 SQ FT 123.8 SQ METRES

Chestnut Grove, London, SW12

Copyright nichecom.co.uk 2017 Produced for Jacksons the Independent Estate Agents REF : 210016

Jacksons Balham  
 8-11 Balham Station Road  
 London  
 SW12 9SG  
 020 8675 6565  
[balham.lettings@jacksonsestateagents.com](mailto:balham.lettings@jacksonsestateagents.com)

Energy Rating: D We aim to make our particulars both accurate and reliable. However they are not guaranteed; nor do they form part of an offer or contract. If you require clarification on any points then please contact us, especially if you're traveling some distance to view. Please note that appliances and heating systems have not been tested and therefore no warranties can be given as to their good working order.