

## TOWN HEAD FARM

£475,000

Low Bentham, LA2 7ER

**Enjoying splendid far reaching views, an exciting opportunity to refurbish the existing farmhouse and to create a four bedroom attached dwelling.**

In the same family since 1893, the existing farmhouse comprises two reception rooms, kitchen, larder, three bedrooms and a house bathroom. There are plans for a courtyard, double garage and rear garden. There is also consent to convert the attached barn and shippens to create an additional two storey dwelling with an open plan living kitchen, dining room, study, conservatory, utility room, cloakroom, four double bedrooms and three bath/shower rooms. Externally, there will be a large single garage, private parking and garden. A gently sloping paddock lies to the south of the property, c 1.41 acres (0.57 hectares). In all, c 1.70 acres (0.69 hectares).

**In an edge of village setting within a short walk of village amenities and highly accessible for road and rail links.**







## Welcome to **TOWN HEAD FARM**

**£475,000**

Low Bentham, LA2 7ER

### Here's our **TOP TEN** reasons to love Town Head Farm:

1. **History** - in the same family since 1893, Town Head Farm comprises a former farmhouse, now ready for a complete refurbishment, as well as an attached stone barn and outbuildings with consent to convert into a separate four bedroom dwelling.
2. **Fabulous far reaching views** - with a south westerly outlook down the Lune Valley and towards the Forest of Bowland National Landscape.
3. **As it stands**, the existing farmhouse, c. 1665 sq ft (154.7 sq m), has a kitchen with base and wall units, a larder and two reception rooms, both with open fires. The sitting room, with alcove cupboard, and hall have decorative floor tiles. To the first floor are three bedrooms and a three piece house bathroom with airing cupboard. There is also a cellar with flag floor and stone benches as well as a workshop, accessed externally.
4. **External space** - plans show for a small courtyard to the south of the farmhouse along with a double garage. There is also an area to the west to allow for the formation of a small garden.
5. **Immense potential** for the attached barn and shippens - planning consent was granted in 2008 (Reference No. 08/2007/7847 dated July 2008) for 'conversion of redundant agricultural farm building into a residential property (and change of use of agricultural land to extend residential curtilage of existing house). A new gateway was installed in 2011 forming part of a related application (Reference No. 08/2007/7848 dated July 2008) for the 'Erection of four properties to the north of Town Head Farm'. Commencement is confirmed but interested parties are advised to make their own enquiries to North Yorkshire Council.
6. **Existing layout** - currently with access from the dining room of the house, the large lean-to passageway has a red brick floor and corrugated roof. A door leads into the double height barn with flag floor and original barn door. Off here is a smaller shippin with concrete stalls and further stores.
7. **Internal plans for the new dwelling show** for an entrance hall with cloakroom and study off, living kitchen open to dining room, conservatory with doors out to the garden, principal bedroom with en suite bathroom and utility room to the ground floor and three double bedrooms, one with an en suite shower room and a house bathroom to the first.
8. **Parking and garden for the new dwelling** - plans show for a new access to be created to the north of the barn leading into a parking area. A large attached single garage has access into the utility room. The drive leads around to the rear where there is space for a garden.
9. **Paddock** - situated to the south lies a gently sloping parcel of land c. 1.41 acres (0.57 hectares), perfect if you want to keep a few sheep or chickens! The land has two access points off the highway.
10. **Location really matters** - in a quiet edge of village setting in Low Bentham, within walking distance of the facilities. For further details on the surrounding area, please turn to page 5.









Proposed floor plans and elevations





## Edge of village setting with lovely open views

Situated close to the **Yorkshire Dales and Lake District National Parks** and the **Forest of Bowland National Landscape** (formerly known as an AONB), Low Bentham is ideal for those who enjoy an active life; this is an area where the outdoors can be embraced - popular for caving and potholing with dramatic waterfalls and caves at Ingleton, or whether you like to walk, run or cycle, there are many scenic routes on hand with the famous Three Peaks, (Ingleborough, Wharfedale and Pen-y-Ghent) nearby.

**Low Bentham**, together with neighbouring **High Bentham**, has a good range of local shops, pubs (The Sundial in Low Bentham is within easy walking distance of Town Head Farm), a range of eateries, churches, post office, florists, Co-op, Spar, as well as a golf course and club house enjoying panoramic views of Ingleborough. There is also a play area full of fun equipment and a basketball court.

More choice is offered in **Ingleton** (3.9 miles) a tourist destination with a choice of eateries, gift shops and an outside heated pool (open May to September).

The ever-popular Cumbrian market town of **Kirkby Lonsdale** (7.5 miles) has a host of independent shops and places to eat, you'll be spoilt for choice! The town provides a good range of local facilities - a bank, churches, florists, the Post Office, Booths supermarket, Boots Chemist, an optician and doctor's and dentists' surgeries.

A larger selection of facilities are available in **Settle** (12.9 miles), **Lancaster** (14.7 miles) or **Kendal** (20.1 miles).

As far as schools are concerned, there is a primary school, (Bentham Community Primary School) located between High and Low Bentham. Lancaster is home to the highly regarded boys' and girls' grammar schools and there are secondary schools at Kirkby Lonsdale (Queen Elizabeth School with the school bus pick up at The Sundial), Settle and Lancaster. Independent schools are at Sedburgh or Giggleswick.

### Travelling further afield:

**By car** - once here, you'll find it a convenient spot, not just for access to the M6 (12.2 miles) but if you are travelling east, head out onto the A65 and bear right.

**By air** - Leeds Bradford Airport (46.7 miles), Manchester Airport (76 miles) and Liverpool Airport (79.8 miles).

**By train** - there is a train station in neighbouring High Bentham (excellent!) with services running between Leeds, Skipton, Lancaster and Morecambe. Lancaster has a station on the West Coast Line.

**To find the property:** from J34 of the M6, take the A683 towards Kirkby Lonsdale. Head through the village of Caton and Claughton and turn right onto the B6480. Continue through Wray and Wennington and into Low Bentham. On entering the village, turn left onto Burton Road (you'll see The Sundial pub on your left) and proceed up the hill. After approximately 0.5 miles Town Head Farm is on the left hand side, before a select development of three modern houses.

*what3words reference: ///equipping.splits.flies*





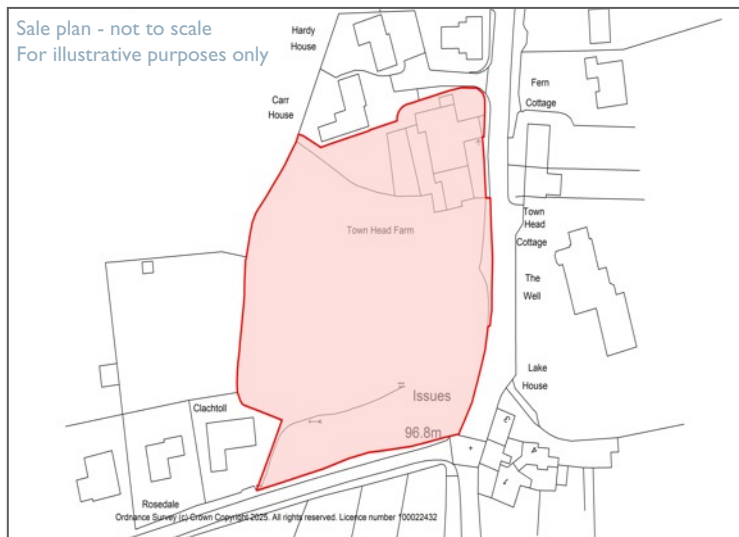
## Services and specifications

---

- Mains electricity, water and drainage
- Two open fires in the sitting and dining rooms
- Immersion heater for hot water
- Double glazed windows in uPVC frames







## Council Tax

## Local Planning Authority

W: [www.northyorks.gov.uk](http://www.northyorks.gov.uk)

The lean-to passageway and shippon is partially dilapidated.

**Please note**

## Money Laundering



## Town Head Farm, Low Bentham, LA2 7ER

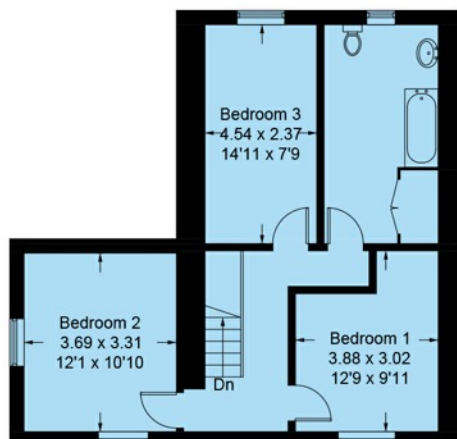
Approximate Gross Internal Area = 210.0 sq m / 2260 sq ft

(Including Store)

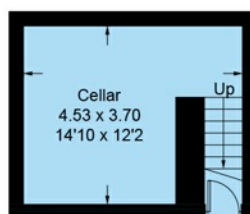
Farm House = 154.7 sq m / 1665 sq ft

(Including Cellar)

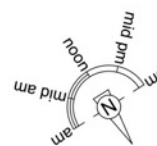
Total = 364.7 sq m / 3925 sq ft



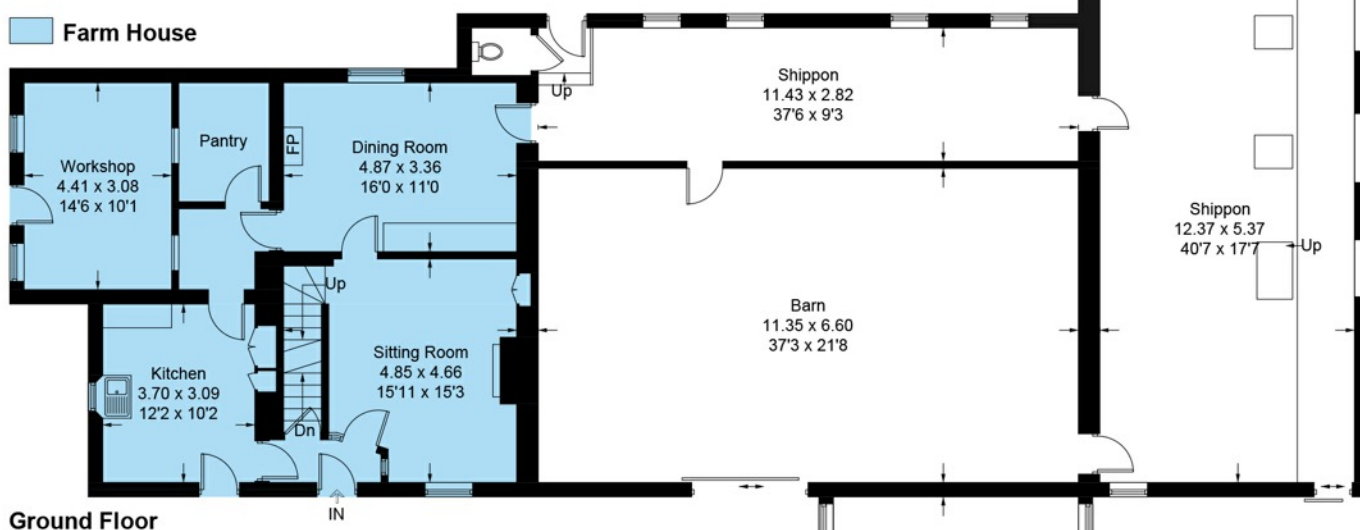
First Floor



Cellar



Farm House



Ground Floor

### Existing floor plans

Energy Efficiency Rating		
	Current	Potential
Very energy efficient - lower running costs		
(92+) A		
(81-91) B		
(69-80) C		
(55-68) D		
(39-54) E		
(21-38) F		
(1-20) G	1	45
Not energy efficient - higher running costs		
England & Wales	EU Directive 2002/91/EC	

Illustration for identification purposes only, measurements are approximate, not to scale. Fourlabs.co © (ID1186239)

IMPORTANT Davis & Bowring, for themselves and for the vendors or lessors of this property whose agents they are give notice that (i) these particulars are set out as a general outline only for guidance of intending purchasers or lessees, and do not constitute, nor constitute part of an offer or contract; (ii) all descriptions, photographs, measurements, areas, dimensions, references to condition and necessary permissions for use and occupation, and other details are given without responsibility and any intending purchasers or tenants should not rely on them as statements or representations of fact but must satisfy themselves by inspection or otherwise as to the correctness of each of them; (iii) no person in the employment of Davis & Bowring, has any authority to make or give any representation or warranty whatever in relation to this property nor have we carried out a detailed survey or tested the services, appliances or fittings in the property; (iv) all viewings are carried out at the sole risk of the viewer and neither the selling agent nor the vendor takes responsibility for any part of the property.