

overlooking side garden, radiator, exposed wooden floor, fitted open shelving and drawer unit.

DRESSING ROOM / STUDY AREA

2.87m x 2.46m (9'5" x 8'1") including built in wardrobe. Velux window, oak flooring, radiator.

SHOWER ROOM

Tiled walls and floor with three piece suite comprising shower cubicle, low flush w.c., half pedestal wash basin, chrome heated towel rail.

TO THE OUTSIDE

GARAGE

4.83m x 4.62m (15'10" x 15'2") Having electric up and over door, light and power, internal door to utility.

STORE ROOM

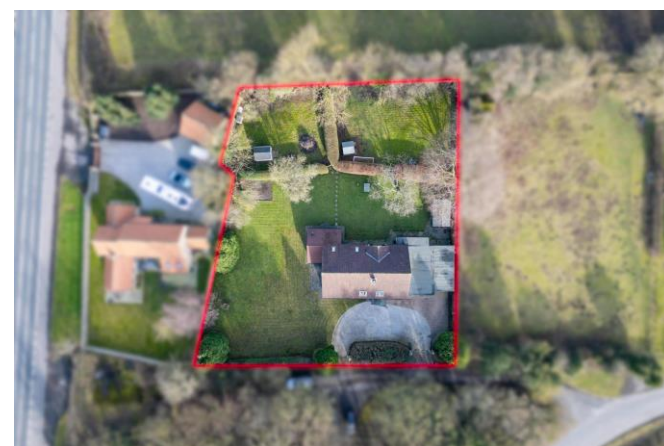
4.5m x 3.66m (14'9" x 12'0") Covered area for bins.

OUTSIDE

The property is approached from the front off a private road through electric wrought iron gates and "crunch-gravel" drive, part block paved and further exit gate creating an 'in & out' feature. The gardens are mainly lawn to three sides, enclosed and private with mature trees and hedging. There is also a :-

PURPOSE BUILT TIMBER FRAMED HOME

OFFICE 4.78m x 2.77m (15'8" x 9'1") With light and power. Oak flooring.



Beyond the formal garden and gates lead into two small paddocks, each with a garden shed. **TOTAL SITE AREA OF APPROXIMATELY 0.59 OF AN ACRE.**

COUNCIL TAX

Band G (from internet enquiry).

SERVICES

We understand mains water, electricity and drainage are connected. Oil fired central heating. No mains gas.

COUNCIL TAX

Band C (from internet enquiry)

GENERAL

Room measurements in these particulars are only approximations and are taken to the widest point.

None of the services fittings or equipment referred to in these particulars have been tested and we are therefore unable to comment as to their condition or suitability. Any intending purchasers should satisfy themselves through their own enquiries.

Please note : Only the fixtures and fittings specifically mentioned in these particulars are included in the sale of the property.

Photographs depict only certain parts of the property. It should not be assumed that the contents/furnishings, furniture etc photographed are included in the sale.

VIEWING

By appointment with the Chartered Surveyors Renton & Parr at their offices, Market Place, Wetherby. Telephone (01937) 582731

Details prepared February 2024

Energy Efficiency Rating		
	Current	Potential
Very energy efficient - lower running costs		
(92 plus) A		
(81-91) B		
(69-80) C		75
(55-68) D	58	
(39-54) E		
(21-38) F		
(1-20) G		
Not energy efficient - higher running costs		
England & Wales		
EU Directive 2002/91/EC		



Kirk Deighton (Nr Wetherby) ~ Midway, Loshpot Lane, LS22 5HJ

Offered on the open market for the first time in 37 years a substantial five-bedroom detached house, providing excellent family accommodation in excess of 3000 sq ft. Set in private lawned gardens of approximately 0.59 of an acre. Countryside walks on the doorstep yet only 1.5 miles from Wetherby town centre.

- Ideally located for countryside walks and motorway connections
- Modern tiled bathrooms
- Superb lounge, garden room, study and dining kitchen
- Excellent proportioned rooms
- Quality oak hardwood floors to principal rooms
- Significantly extended and improved over recent years

£975,000 OFFERS OVER FOR THE FREEHOLD

3 5 3

MISREPRESENTATION ACT

Renton & Parr Ltd for themselves and for the Vendors or lessors of this property whose agents they give notice that :-

1. The particulars are set out as a general outline only for the guidance of intending purchasers or lessees, and do not constitute, nor constitute part of, an offer or contract.
2. All descriptions, dimensions, references to condition and necessary permission for use and occupation, and other details are given in good faith and are believed to be correct but any intending purchasers or tenants should not rely on them as statements or representations of fact but must satisfy themselves by inspection or otherwise as to the correctness of each of them.
3. No person in the employment of Renton & Parr Ltd has any authority to make or give any representation or warranty whatever in relation to this property.



Renton & Parr

CHARTERED SURVEYORS
ESTATE AGENTS
VALUERS

01937 582731
sales@rentonandparr.co.uk
rentonandparr.co.uk

Premium

All-round excellence, all round Wetherby since 1950

KIRK DEIGHTON

Kirk Deighton is an unspoilt limestone village extremely conveniently located approximately one mile north of the busy market town of Wetherby well served by a wide variety of shopping, schooling, travel and recreational facilities. The A1 is also close by giving excellent access to all important centres such as Leeds, Bradford, York and Harrogate as well as convenience for travel further afield.

DIRECTIONS

Proceeding from Wetherby along Deighton Road towards the A1. At the first roundabout turn left onto the A168 north. Take the first left towards Kirk Deighton along Mark Lane and immediately left over the flyover. At the junction with Loshpot Lane turn right and immediately left and the property is situated on the right hand side.



THE PROPERTY

We are delighted to be bringing to the market Midway. An individual five bedroom detached family house last sold 37 years ago. The property has been significantly improved and extended by the current owners to provide excellent family accommodation, set in garden grounds of approximately 0.59 of an acre.

The ground floor features stunning lounge, ideal for entertaining and could easily be split into separate rooms. A wrap-around garden room together with study and dual aspect dining kitchen all feature quality oak flooring.

On the first floor there are five potential bedrooms in total. The largest having previously been used as a first floor lounge and together with bedroom four would create an impressive master bedroom suite.

To the outside, the property sits in 0.59 acres of mainly lawns with two small paddocks, garage, store room and an impressive 'in & out' gated driveway.

The property is ideally situated in a semi-rural location, yet having immediate access onto the A168 and A1(M1) bypass

being within approximately 1.5 miles of Wetherby town centre and excellent local amenities.

Benefiting from oil fired central heating and replacement UPVC double glazed windows, the accommodation in further detail comprises :-

GROUND FLOOR

ENTRANCE PORCH

With modern composite entrance door, double glazed window, exposed stone wall, tiled floor, glazed inner door to :-

RECEPTION HALL

4.88m x 2.08m (16'0" x 6'10")

With oak flooring and matching oak staircase to first floor, understairs storage cupboard, radiator, ceiling cornice.

INNER HALL

Tiled floor, radiator.

DOWNSTAIRS CLOAKROOM

Tiled walls and floor with modern white suite comprising low flush w.c., half pedestal wash basin, extractor fan, radiator, double glazed window.

STUDY

3.61m x 2.39m (11'10" x 7'10")

Oak flooring, double glazed window overlooking rear garden, radiator.

LOUNGE

8.94m x 8.69m (29'4" x 28'6") Narrowing to 6.1m (20'0") An excellent entertaining room which could be divided into two rooms featuring oak flooring, double glazed windows and French door to side garden, three radiators, wall light points, feature fireplace with rustic brick chimney piece and Herringbone style inset, extended plinths, housing for T.V. and video etc, wood burning stove. Built in display shelving, storage cupboard. Double doors to :-



'L' SHAPED GARDEN ROOM

5.21m x 2.64m (17'1" x 8'8") plus 2.62m x 2.59m (8'7" x 8'6")

A light and spacious room with vaulted ceiling, double glazed windows including two French doors to the garden, wood burning stove, feature brick walling, oak flooring.



DINING KITCHEN

8.76m x 3.61m (28'9" x 11'10")

Oak flooring, double glazed windows to front and rear, fitted kitchen with range of wall and base units including cupboards and drawers, worktops with tiled surrounds, one and a half bowl stainless steel sink unit with mixer tap, double oven, halogen hob with extractor hood above, built in dishwasher, two radiators, breakfast bar, space for table and chairs.



REAR PORCH

Radiator, double glazed window, rear access door.

BOILER ROOM

With oil fired central heating boiler.

UTILITY ROOM

4.88m x 3.89m (16'0" x 12'9")

Worktops and sink unit, base cupboard, hot water storage tank, plumbed for automatic washing machine. Door to garage and useful store.

FIRST FLOOR

GALLERY LANDING

With oak flooring and modern stylish staircase, Velux window, loft access.

BEDROOM ONE

5.11m x 3.61m (16'9" x 11'10")

With Velux window to front, built in wardrobe, dressing table with drawers, radiator, oak flooring.



EN-SUITE SHOWER

Shower cubicle, wash basin, radiator, extractor fan.

BEDROOM TWO

3.66m x 3.43m (12'0" x 11'3") to face of fitted wardrobes on one wall

Double glazed side window with long distance views, radiator, oak flooring.

BEDROOM THREE

4.29m x 3.61m (14'1" x 11'10") overall

Including two fitted wardrobes, double glazed aspect window, radiator.

FAMILY BATHROOM

2.87m x 2.44m (9'5" x 8'0")

Tiled walls and floor with four piece modern white suite comprising panelled bath, walk-in shower, half pedestal wash basin, low flush w.c., chrome heated towel rail, double glazed window.

BEDROOM FOUR

3.43m x 3.07m (11'3" x 10'1") plus door recess

Including two fitted double wardrobes, dressing table with drawers, radiator, oak flooring, double glazed side window and Velux to rear.

BEDROOM FIVE / PLAYROOM

5.18m x 4.98m (17'0" x 16'4")

Formerly a first floor lounge but offering ideal opportunity for principal bedroom suite with double glazed window

