



86 Winsford Avenue, Coventry, CV5 9JF
£230,000

cartwright
hands

86 Winsford Avenue

Coventry

- Renovation Project
- Three Bedrooms
- Lounge/diner
- Bathroom
- Garden
- No Chain
- Freehold
- EPC C (69)
- Council Tax Band B

Great renovation project situated in this sought after location within a stones throw of the local shops and amenities in Allesley Park. This three bedroom house features: entrance hall, lounge/diner, kitchen, bathroom, garden to rear and garage. The property is offered with no onward chain.



Accommodation Comprises

On the ground floor

Entrance hall

Double glazed door to front, stairs to first floor, door to lounge/diner & kitchen.

Lounge/Diner

Double glazed windows to front & rear, fireplace, radiators.

Kitchen

Double glazed window to rear, range of wall and base unit cupboards and drawers, one and quarter bowl stainless steel sink and drainer, plumbing for washing machine, integrated four ring gas hob and electric oven with cooker hood, radiator, door to rear garden.

On the First Floor

Landing :

Bedroom one

Double glazed window to front, radiator.

Bedroom two

Double glazed window to rear, radiator, wall mounted gas central heating boiler.

Bedroom three

Double glazed window to front, radiator.



Separate W.C.

Opaque double glazed window to rear, low level WC.

Bathroom

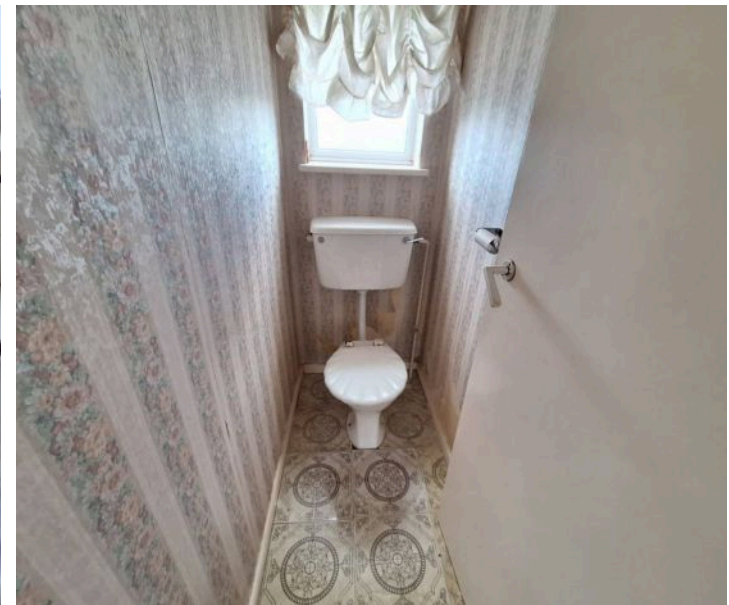
Opaque double glazed window to rear, panelled bath, wash hand basin, radiator.

Garden

Mainly laid to lawn, enclosed with timber fence boundary.

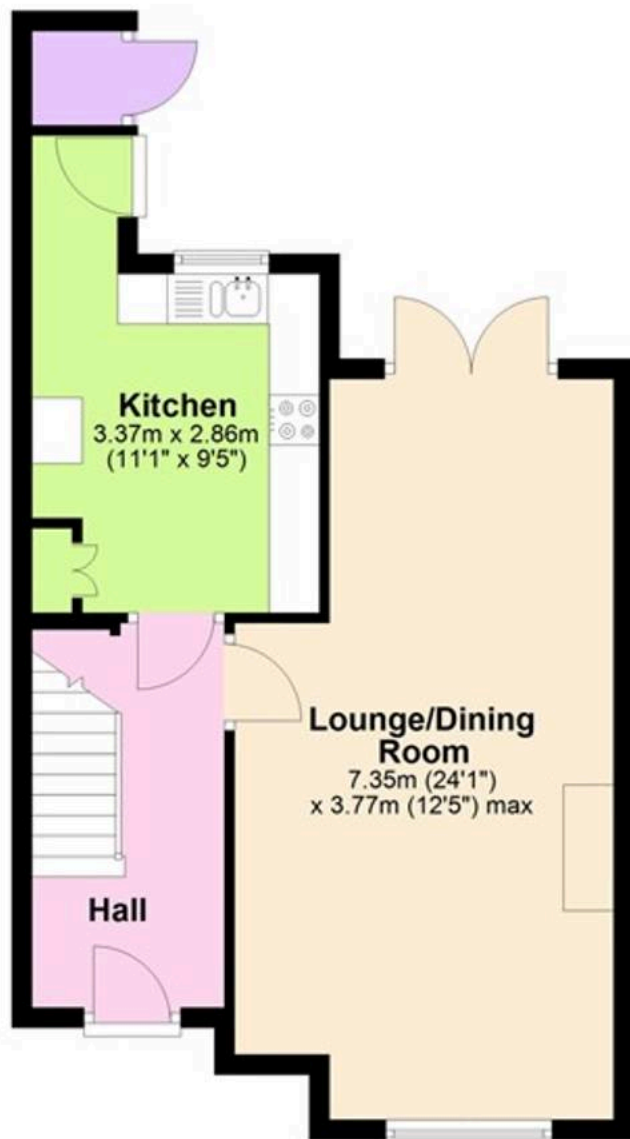
Garage

Garage at the end of the garden.



Ground Floor

Approx. 44.7 sq. metres (481.4 sq. feet)



First Floor

Approx. 47.5 sq. metres (511.2 sq. feet)



Total area: approx. 92.2 sq. metres (992.6 sq. feet)

For illustrative purposes only. Whilst every attempt has been made to ensure the plan is accurate and presents the property in the best way, measurements of doors, windows and rooms are approximate and no responsibility is taken for any error, omission or mis-statement

Special Notes

We have not tested the equipment, appliances, and services in this property. Interested applicants are advised to commission the appropriate investigations before formulating their offer to purchase. The measurements are supplied for guidance only. Only those items mentioned in these sales particulars are included in the sale. Ask agent regarding Rights & Restrictions. If you require the full EPC certificate, please contact us and we will email the EPC certificate to you.

Money Laundering

We have in place procedures and controls, which are designed to forestall and prevent Money Laundering. If we suspect that a supplier, customer/client, or employee is committing a Money Laundering offence as defined by the Proceeds of Crime Act 2002, we will in accordance with our legal responsibilities disclose the suspicion to the National Crime Intelligence Service. Intending purchasers will be asked to produce identification documentation at a later stage and we would ask for your co-operation in order that there will be no delay in agreeing the sale.

Disclaimer

Cartwright Hands for themselves and the vendors of the property, whose agents they are give notice that these particulars, although believed to be correct, do not constitute any part of an offer or contract, that all statements contained in these particulars as to this property, are made without responsibility and are not to be relied upon as statements or representation of fact that they do not make or give any representation or warranty whatsoever in relation to this property. An intending purchaser must satisfy himself by inspection or otherwise as to the correctness of each of the statements contained in these particulars. With regard to appliances and electrical installations, none of the items detailed have been tested and prospective purchaser



Telephone: 02476 256 616
Email: sales@cartwriighthands.co.uk
121-123 New Union St, Coventry, CV1 2NT

1. MONEY LAUNDERING REGULATIONS Intending purchasers will be asked to produce identification documentation at a later stage and we would ask for your co-operation in order that there will no delay in agreeing the sale. 2. Theses particulars do not constate part or all of an offer or contract. 3. The measurements indicated are supplied for guidance only and as such must be considered incorrect. Potential buyers are advised to recheck measurements before committing to any expense. 4. We have not tested any apparatus, equipment, fixtures, fittings or services and it is in the buyers interest to check the working condition of any appliances.