



254 Brookside Avenue, Whoberley, Coventry CV5 8AD

£180,000

cartwright

hands

254 Brookside Avenue

Whoberley, Coventry

- Three Bedrooms
- W.C
- Lounge
- Kitchen
- Lean-to and Utility Area
- Shower Room
- Freehold
- EPC D (57)
- Council Tax Band B

This three bedroom end of terrace property is in need of renovation and offers spacious rooms featuring: entrance hall, downstairs WC, lounge, kitchen, utility room, conservatory, three bedrooms and shower room, garden to rear. The property is offered with no chain.



Entrance Hall

Door to front, door to kitchen and downstairs WC.

W.C

Window to front, low level WC, wash hand basin.

Lounge

Double glazed window to front, radiators, sliding doors to conservatory.

Kitchen

Range of wall and base unit cupboards and drawers, single bowl sink and drainer, space for cooker, door to utility room.

Utility Area

Plumbing for washing machine, wall mounted gas central heating boiler, door to rear garden.

Conservatory

Windows to side and rear, radiator, sliding door to rear garden.

On the first floor**Landing**

Doors to bedrooms and shower room.

Bedroom one

Double glazed window, radiator.

Bedroom two

Double glazed window, radiator.

Bedroom three

Double glazed window, radiator.

Shower Room

Opaque double glazed window, shower cubicle with mains shower, low level WC, wash hand basin.

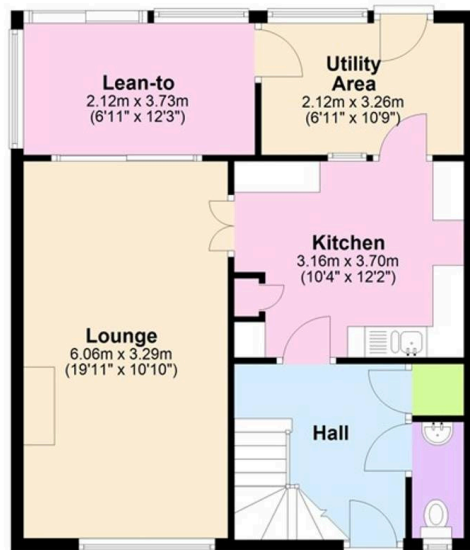
Garden

Patio area and flower beds enclosed by timber fence boundary.



Ground Floor

Approx. 58.8 sq. metres (632.4 sq. feet)



First Floor

Approx. 42.8 sq. metres (460.2 sq. feet)



Total area: approx. 101.5 sq. metres (1092.6 sq. feet)

For illustrative purposes only. Whilst every attempt has been made to ensure the plan is accurate and presents the property in the best way, measurements of doors, windows and rooms are approximate and no responsibility is taken for any error, omission or mis-statement

Special Notes

We have not tested the equipment, appliances, and services in this property. Interested applicants are advised to commission the appropriate investigations before formulating their offer to purchase. The measurements are supplied for guidance only. Only those items mentioned in these sales particulars are included in the sale. Ask agent regarding Rights & Restrictions. If you require the full EPC certificate, please contact us and we will email the EPC certificate to you.

Money Laundering

We have in place procedures and controls, which are designed to forestall and prevent Money Laundering. If we suspect that a supplier, customer/client, or employee is committing a Money Laundering offence as defined by the Proceeds of Crime Act 2002, we will in accordance with our legal responsibilities disclose the suspicion to the National Crime Intelligence Service. Intending purchasers will be asked to produce identification documentation at a later stage and we would ask for your co-operation in order that there will be no delay in agreeing the sale.

Disclaimer

Cartwright Hands for themselves and the vendors of the property, whose agents they are give notice that these particulars, although believed to be correct, do not constitute any part of an offer or contract, that all statements contained in these particulars as to this property, are made without responsibility and are not to be relied upon as statements or representation of fact that they do not make or give any representation or warranty whatsoever in relation to this property. An intending purchaser must satisfy himself by inspection or otherwise as to the correctness of each of the statements contained in these particulars. With regard to appliances and electrical installations, none of the items detailed have been tested and prospective purchasers should satisfy themselves with regard to their condition.



Telephone: 02476 256 616
Email: sales@cartwriighthands.co.uk
121-123 New Union St, Coventry, CV1 2NT

1. MONEY LAUNDERING REGULATIONS Intending purchasers will be asked to produce identification documentation at a later stage and we would ask for your co-operation in order that there will no delay in agreeing the sale. 2. Theses particulars do not constate part or all of an offer or contract. 3. The measurements indicated are supplied for guidance only and as such must be considered incorrect. Potential buyers are advised to recheck measurements before committing to any expense. 4. We have not tested any apparatus, equipment, fixtures, fittings or services and it is in the buyers interest to check the working condition of any appliances.