



## London Road, Attleborough, NR17 2DD

A character filled three bedroom family home with large rear garden

**£365,000** FREEHOLD

# London Road, Attleborough, NR17 2DD

A character filled three bedroom family home with large rear garden

## Overview

- THREE STOREY SEMI DETACHED HOUSE
- THREE DOUBLE BEDROOMS
- LARGE AND WELL MAINTAINED REAR GARDEN
- TWO RECEPTION ROOMS
- MODERN KITCHEN DINER WITH ADDITIONAL GARDEN ROOM
- AMPLE OFF ROAD PARKING
- FAMILY BATHROOM PLUS ENSUITE

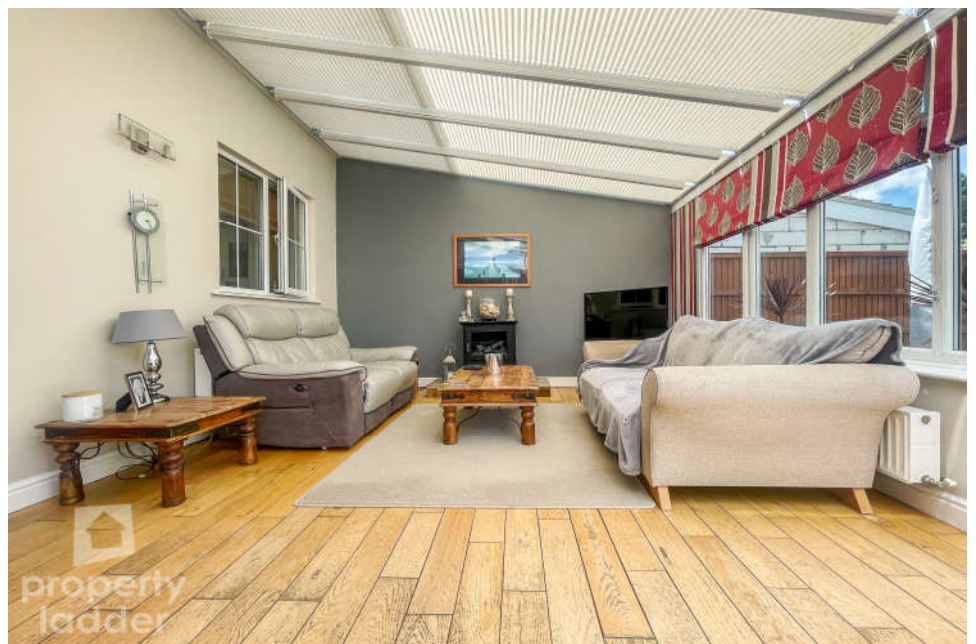


“This Attleborough home really is a must see, with three bedrooms, living room, kitchen diner and conservatory and large rear garden, it won't be on the market long!”



## HANDSOME HOME, GORGEOUS GARDEN!

Arranged over three levels, this semi detached and character filled family home offers three bedrooms with en-suite to master, two receptions rooms, downstairs WC, large rear garden and ample off road parking! With so much space and character, this is a must see!



## Location

Attleborough is a popular market town just off the A11. Attleborough offers a wide range of excellent local amenities including independent shopping facilities, supermarkets, bars, doctors and schooling. The A11 provides easy access from the property to Norwich and Thetford. This is an opportunity to live tucked away in a rural position yet within easy reach of transport links.



## Directions

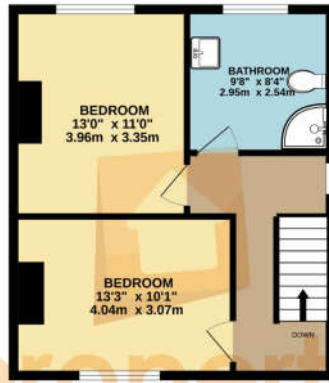
Leaving Norwich heading South on A11, turn left onto the Attleborough Bypass, turn left onto Queen's Road following round onto High Street, continuing onto London Road where the property can be found on your right hand side and identified by our PropertyLadder For Sale board.



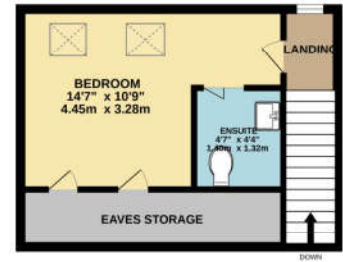
GROUND FLOOR  
684 sq.ft. (63.6 sq.m.) approx.



1ST FLOOR  
423 sq.ft. (39.3 sq.m.) approx.



2ND FLOOR  
283 sq.ft. (26.3 sq.m.) approx.



property ladder

TOTAL FLOOR AREA : 1391 sq.ft. (129.2 sq.m.) approx.

Whilst every attempt has been made to ensure the accuracy of the floorplan contained here, measurements of doors, windows, rooms and any other items are approximate and no responsibility is taken for any error, omission or mis-statement. This plan is for illustrative purposes only and should be used as such by any

**PLOT IMAGE IS FOR ILLUSTRATION PURPOSES ONLY AND DOES NOT ACCURATELY INDICATE THE ACTUAL BOUNDARY**



propertyladder 

## Selling your home?

If you are considering selling your home please contact us for your no obligation free market appraisal.

Get in touch today!

Tel: 01603 666006

**FULL EPC AVAILABLE UPON REQUEST**



40 Exchange Street, Norwich, Norfolk, NR2 1AX

**T 01603 666006**



propertyladderonline.com

IMPORTANT NOTICE: Property Ladder, their clients and any joint agents give notice that: 1. They are not authorised to make or give any representations or warranties in relation to the property either here or elsewhere, either on their own behalf or on behalf of their client or otherwise. They assume no responsibility for any statement that may be made in these particulars. These particulars do not form part of any offer or contract and must not be relied upon as statements or representations of fact. 2. Any areas, measurements or distances are approximate. The text, photographs and plans are for guidance only and are not necessarily comprehensive. It should not be assumed that the property has all necessary planning, building regulation or other consents and Property Ladder have not tested any services, equipment or facilities. Purchasers must satisfy themselves by inspection or otherwise.