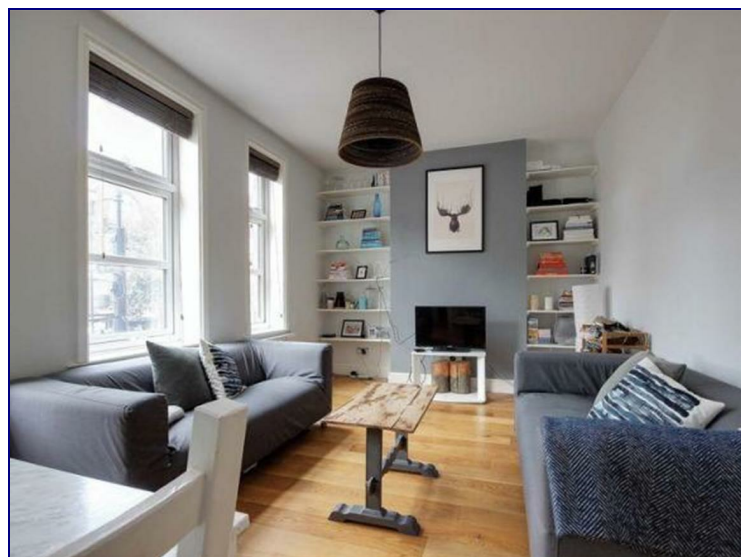


Mare Street, London, E8 1HA



£2,250 Per Month

Kings Group are proud to present a lovely 2 Bedroom Flat in the Heart of Hackney Central. This Flat is offered to the market with No Onward Chain, and is a well-presented first floor apartment.

The property benefits from a large lounge, fitted kitchen, family bathroom and two bedrooms, as well as having an abundance of light throughout.

EPC Rating: C

Total Floor Area: 52 Sq M

This property is located on the vibrant Mare Street in Hackney which is on the doorstep to an array of Shops, Restaurants, Bars, and other amenities. Transport is also not an issue here as you have Hackney Central, Hackney Downs, and London Fields Train Stations all within half a mile, as well as multiple Bus Routes operating on Mare Street.

Early viewing is recommended so call now to arrange your viewing!

Kings Group are proud to present a lovely 2 Bedroom Flat in the Heart of Hackney Central. This Flat is offered to the market with No Onward Chain, and is a well-presented first floor apartment.

The property benefits from a large lounge, fitted kitchen, family bathroom and two bedrooms, as well as having an abundance of light throughout.





Whilst every attempt has been made to ensure the accuracy of the floor plan contained here, measurements of doors, windows, rooms and any other items are approximate and no responsibility is taken for any error, omission, or mis-statement. This plan is for illustrative purposes only and should be used as such by any prospective purchaser. The services, systems and appliances shown have not been tested and no guarantee as to their operability or efficiency can be given

Made with Metropix ©2017

Energy Efficiency Rating		
	Current	Potential
Very energy efficient - lower running costs		
(92 plus) A		
(81-91) B		
(69-80) C		
(55-68) D		
(39-54) E		
(21-38) F		
(1-20) G		
Not energy efficient - higher running costs		
England & Wales	EU Directive 2002/91/EC	

Environmental Impact (CO ₂) Rating		
	Current	Potential
Very environmentally friendly - lower CO ₂ emissions		
(92 plus) A		
(81-91) B		
(69-80) C		
(55-68) D		
(39-54) E		
(21-38) F		
(1-20) G		
Not environmentally friendly - higher CO ₂ emissions		
England & Wales	EU Directive 2002/91/EC	

