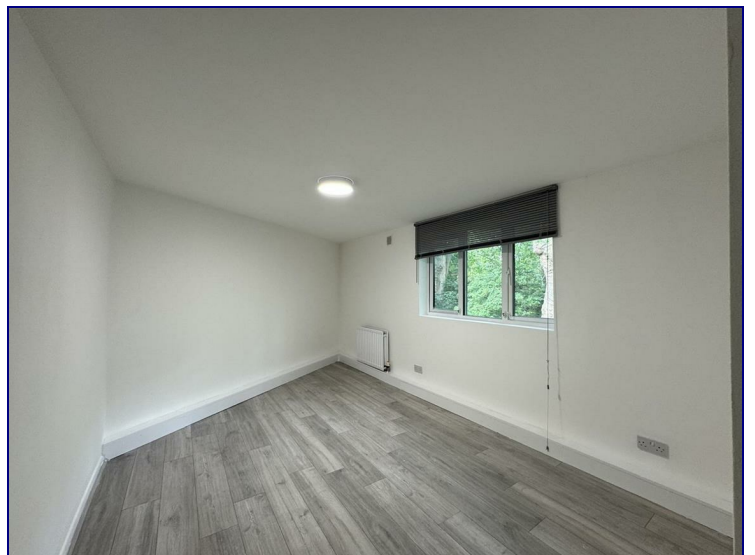


**Eastway, London, E9 5JH**



**£2,000 Per Month**

Available for immediate occupation this rarely available 2 bed apartment set within a gated development. The property offers masses of space, high ceilings, wood floors and neutral decor as well as off street parking for one car. There is a modern fitted kitchen with appliances and a shower room/ utility room. Close to all local amenities and transport links into Liverpool Street and the City and West End along with giving fantastic access to the A12 and the Olympic village. This apartment would be ideal for someone who works from home and needs lots space. Available immediately. Offered furnished or unfurnished.



Energy Efficiency Rating		
	Current	Potential
<i>Very energy efficient - lower running costs</i>		
(92 plus) <b>A</b>		
(81-91) <b>B</b>		
(69-80) <b>C</b>		
(55-68) <b>D</b>		
(39-54) <b>E</b>		
(21-38) <b>F</b>		
(1-20) <b>G</b>		
<i>Not energy efficient - higher running costs</i>		
<b>England &amp; Wales</b>	EU Directive 2002/91/EC	

Environmental Impact (CO <sub>2</sub> ) Rating		
	Current	Potential
<i>Very environmentally friendly - lower CO2 emissions</i>		
(92 plus) <b>A</b>		
(81-91) <b>B</b>		
(69-80) <b>C</b>		
(55-68) <b>D</b>		
(39-54) <b>E</b>		
(21-38) <b>F</b>		
(1-20) <b>G</b>		
<i>Not environmentally friendly - higher CO2 emissions</i>		
<b>England &amp; Wales</b>	EU Directive 2002/91/EC	

