



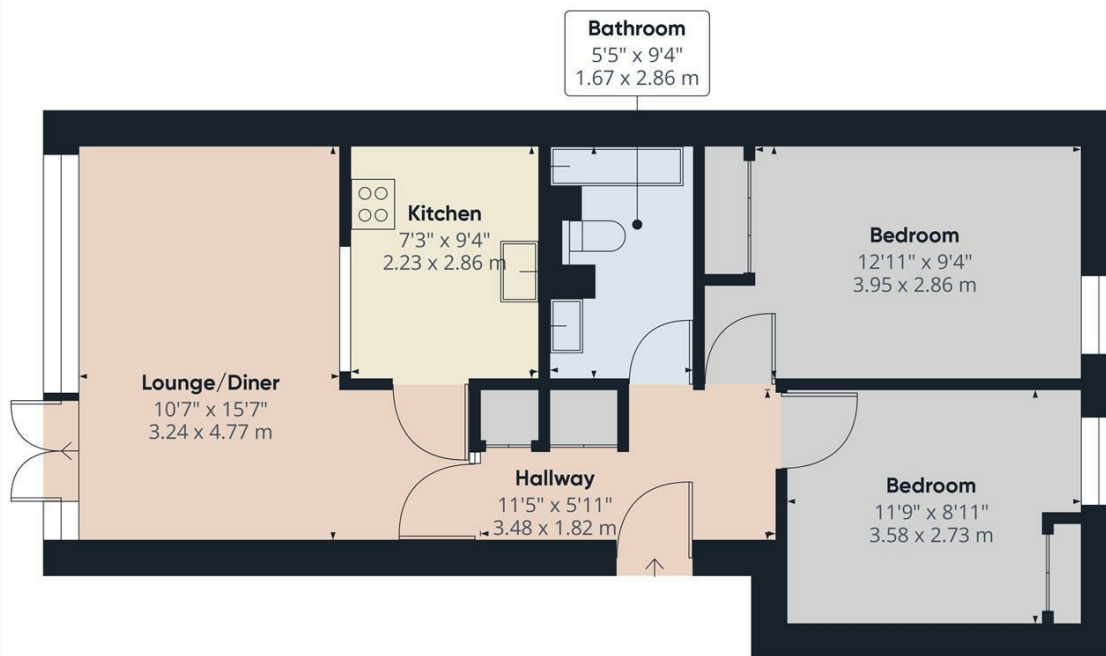
11 ALBANY COURT

CROMER, NR27 9AZ

£875 PCM

A well presented second floor apartment situated close to Cromer Town Centre. Comprising Lounge, Kitchen, Two Double Bedrooms, Bathroom, Balcony with Sea Views and Allocated Off Road Parking. Recently Redecorated & Newly Fitted Flooring. Unfurnished & Available NOW. Call Henleys to view.


HENLEYS
Residential Sales & Lettings



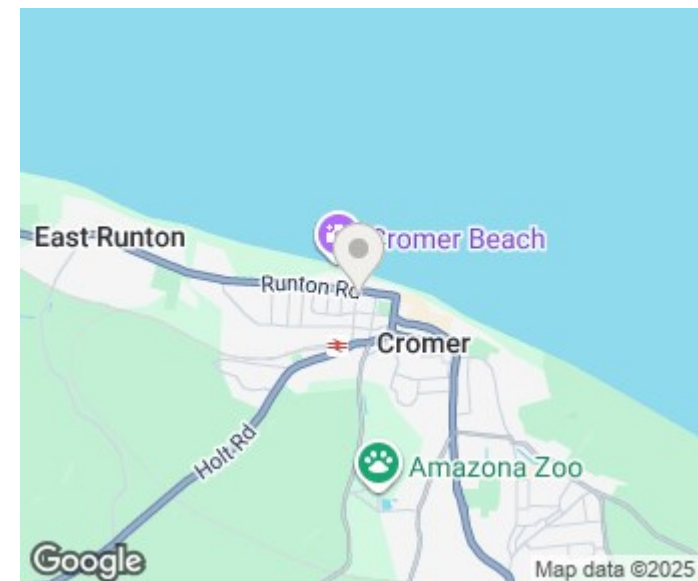
Approximate total area¹⁾
619.79 ft²
57.58 m²

(1) Excluding balconies and terraces

While every attempt has been made to ensure accuracy, all measurements are approximate, not to scale. This floor plan is for illustrative purposes only.

Calculations are based on RICS IPMS 3C standard.

GIRAFFE360



Energy Efficiency Rating		
	Current	Potential
Very energy efficient - lower running costs		
(92 plus) A		
(81-91) B		
(69-80) C		
(55-68) D		
(39-54) E	55	59
(21-38) F		
(1-20) G		
Not energy efficient - higher running costs		
England & Wales	EU Directive 2002/91/EC	