



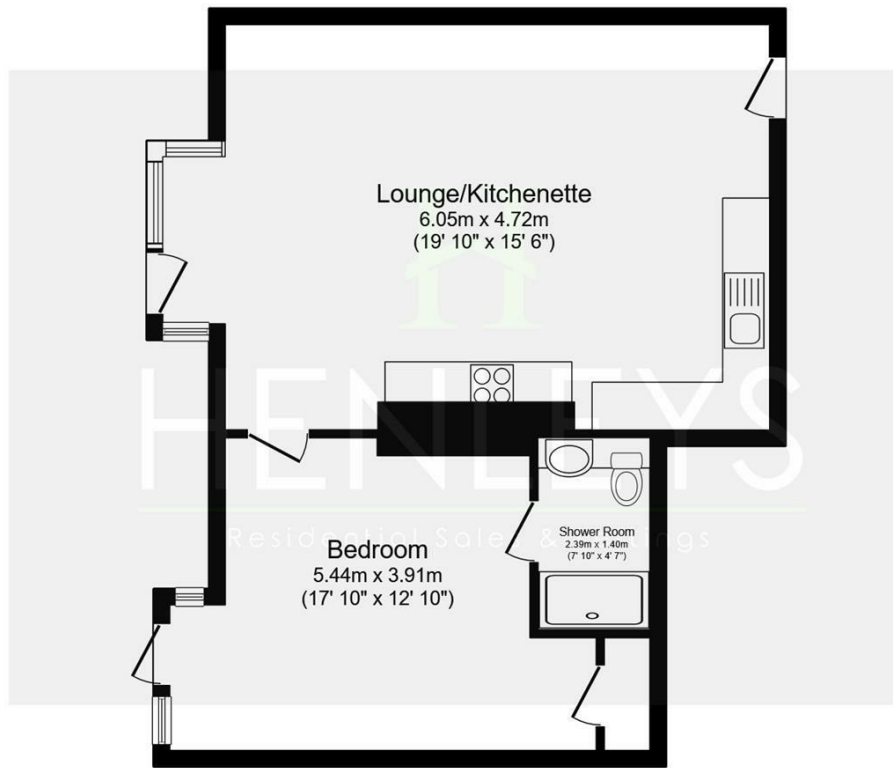
1 BRACONDALE COURT OVERSTRAND ROAD

CROMER, NR27 0AJ

£200,000
LEASEHOLD

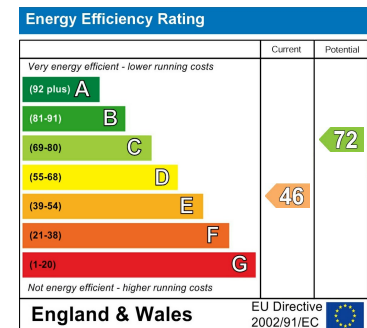
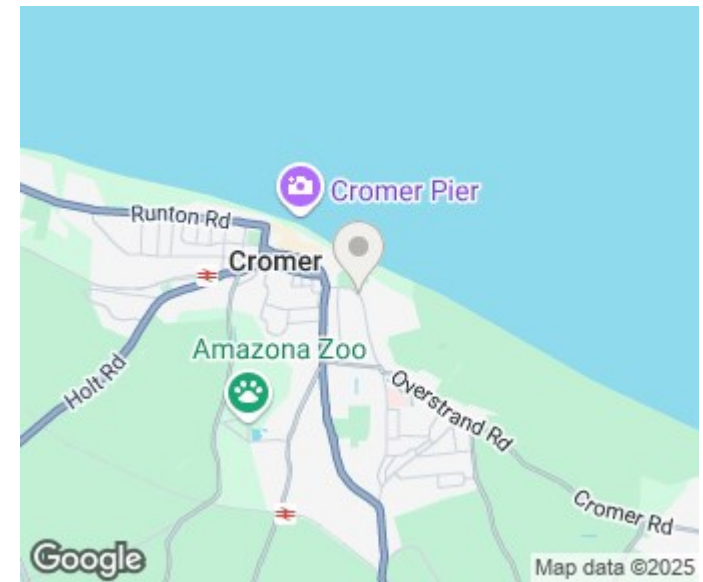
A well presented one bedroom upper ground floor apartment situated close to Cromer Town Centre. Comprising Spacious Lounge/Kitchenette, Double Bedroom, Shower Room and Communal Rear Patio. Call Henleys to view.


HENLEYS
Residential Sales & Lettings



Total floor area 61.4 sq.m. (661 sq.ft.) approx

This plan is for illustration purposes only and may not be representative of the property. Plan not to scale. Powered by PropertyBox



HENLEYS
Residential Sales & Lettings

Cromer Lettings
15 West Street
Cromer
Norfolk
NR27 9HZ

01263 511111
cromer@henleysea.co.uk
www.henleysea.co.uk

Agents Note: Whilst every care has been taken to prepare these particulars, they are for guidance purposes only. All measurements are approximate and are for general guidance purposes only and whilst every care has been taken to ensure their accuracy, they should not be relied upon and potential buyers/tenants are advised to recheck the measurements