



20 Blackwell Close , London, N21 1UL Offers Over £355,000

Cottage Fields welcomes you to this beautifully presented two-bedroom apartment, perfectly tailored for modern living. Situated in a highly desirable location, this home offers a bright and spacious layout, creating a welcoming and comfortable atmosphere from the moment you step inside. The open-plan living area is perfect for entertaining or relaxing, flowing effortlessly into a contemporary kitchen, complete with high-quality appliances and ample storage. Large windows throughout fill the space with natural light, adding to the apartment's airy feel.

The principal bedroom is a true highlight, featuring a sleek en-suite bathroom that provides a touch of luxury and privacy. The second bedroom is also generously sized as a large double, making it ideal for guests, a home office, or a growing family. Both bedrooms offer ample storage, ensuring the apartment is as practical as it is stylish. The property also benefits from a modern family bathroom, finished to a high standard.

In addition to its modern design, this apartment comes with a long lease and a range of appealing features. Residents enjoy secure entry, allocated parking, and access to well-maintained communal gardens. This is an ideal opportunity for first-time buyers, downsizers, or investors looking for a property that offers both comfort and convenience in a prime location. Don't miss your chance to make this stunning apartment your new home!

- Long Lease!
- En-Suite to Principle Bedroom
- Offers Considered
- Offered Chain Free
- Allocated Parking
- Catchment of HIGHLANDS SECONDARY SCHOOL (Outstanding)
- Catchment of EVERSLEY (Outstanding)
- Local Shops inc. Sainsburys Nearby
- Walking Distance to Grange Park Mainline Station (Moorgate approx 30 mins)

Viewing

Please contact our Cottage Fields Office on 020 3621 8621 if you wish to arrange a viewing appointment for this property or require further information.



2

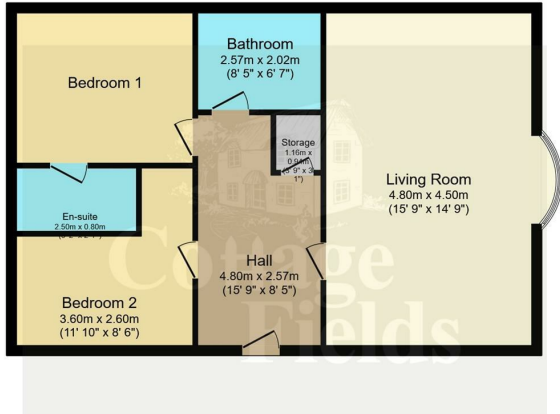


1



Floor Plan

20 Blackwell Close, London, N21 1UL



Ground Floor
Floor area 75.0 m² (807 sq.ft.)

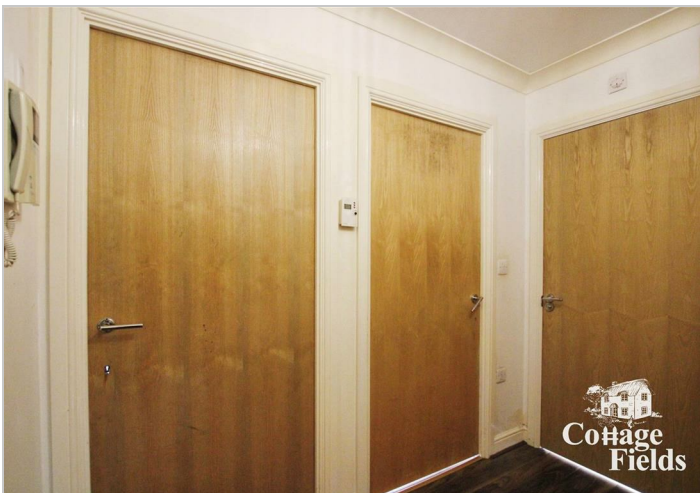
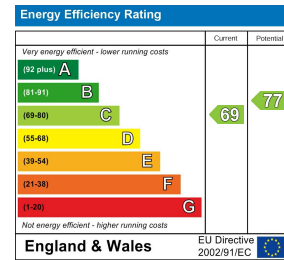
TOTAL: 75.0 m² (807 sq.ft.)

This floor plan is for illustrative purposes only. It is not drawn to scale. Any measurements, floor areas (including any total floor area), openings and orientations are approximate. No details are guaranteed, they cannot be relied upon for any purpose and do not form any part of any agreement. No liability is taken for any error, omission or misstatement. A party must rely upon its own inspection(s). Powered by www.propertybox.io

Area Map



Energy Efficiency Graph



These particulars, whilst believed to be accurate are set out as a general outline only for guidance and do not constitute any part of an offer or contract. Intending purchasers should not rely on them as statements of representation of fact, but must satisfy themselves by inspection or otherwise as to their accuracy. No person in this firm's employment has the authority to make or give any representation or warranty in respect of the property.

135 Lancaster Road, Enfield, EN2 0JN

Tel: 020 3621 8621 Email: sales@cottagefields.co.uk