



79 Swaythling Close

, London, N18 2QQ

£1,750

Welcome to this beautifully spacious 2-bedroom flat, located in the highly sought-after Swaythling Close, N18. Perfectly positioned for those looking for a comfortable, modern lifestyle in a convenient location, this flat offers the ideal balance of contemporary design and homely warmth. As you enter the property, you'll be immediately impressed by the open-plan living area, which seamlessly integrates a modern kitchen, dining, and lounge space. The kitchen itself is fitted with sleek, high-quality appliances, and plenty of counter-top space, making it ideal for cooking enthusiasts or those who enjoy entertaining guests. The open-plan design ensures a bright, airy feel throughout, with natural light flooding the entire living area, creating a sense of space and calm. The dining and lounge areas offer flexibility for different living arrangements, whether you want a cozy movie night or a larger gathering of friends. With beautiful, neutral decor, the flat provides the perfect canvas for you to add your own personal touches and style.

The two bedrooms are generously sized, offering ample storage and comfort, ideal for both relaxation and rest. Each bedroom benefits from large windows, ensuring an abundance of natural light, and providing a bright, welcoming atmosphere. The layout of the flat allows for privacy between rooms, making it suitable for families, professionals, or individuals sharing.

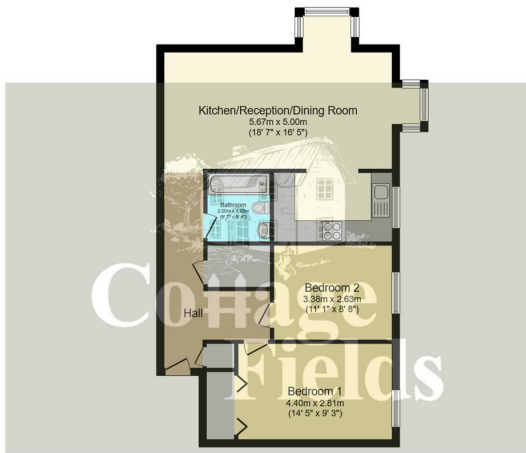
- Share of Freehold (900 year lease)
- No Ground Rent
- Service Charge under £1600 per annum
- Two Good Parking Spaces
- Communal Garden
- Short distance to Local BR Stations, with links to Central London
- Allocated Parking
- Local Amenities short distance away

Viewing

Please contact our Cottage Fields Office on 020 3621 8621 if you wish to arrange a viewing appointment for this property or require further information.



Floor Plan



Floor Plan
Floor area 71.8 m² (773 sq.ft.)

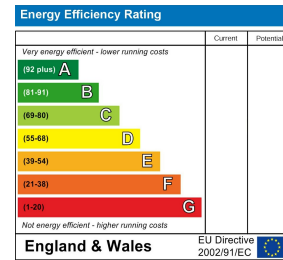
TOTAL: 71.8 m² (773 sq.ft.)

This floor plan is for illustrative purposes only. It is not drawn to scale. Any measurements, floor areas (including any total floor area), openings and orientations are approximate. No details are guaranteed, they cannot be relied upon for any purpose and do not form any part of any agreement. No liability is taken for any error, omission or misstatement. A party must rely upon its own inspection(s). Powered by www.propertybox.co.uk

Area Map



Energy Efficiency Graph



These particulars, whilst believed to be accurate are set out as a general outline only for guidance and do not constitute any part of an offer or contract. Intending purchasers should not rely on them as statements of representation of fact, but must satisfy themselves by inspection or otherwise as to their accuracy. No person in this firm's employment has the authority to make or give any representation or warranty in respect of the property.