



1608 Great Cambridge Road

, Enfield, EN1 4SZ

Asking Price £650,000

Cottage Fields welcomes you to this beautifully presented four-bedroom semi-detached home, offering over 1600 sq. ft. of thoughtfully designed living space, perfect for families or those who love to entertain. Nestled in a sought-after location, this modern property is brimming with stylish features, spacious interiors, and a serene outdoor space, making it an ideal choice for contemporary living.

Upon entering this home, you are greeted by a welcoming porch leading into a bright and airy entrance hall with high ceilings and a large mirror. The ground floor features two generous reception rooms, offering versatile living and dining areas for relaxed family living. A modern kitchen/diner, complete with sleek appliances, is perfect for home chefs and offers a seamless flow into a spacious entertaining area with a convenient W/C, adding to the practicality of the layout.

Upstairs, the property boasts four spacious bedrooms, each flooded with natural light and designed with comfort in mind. All Bedrooms on this floor boast built-in wardrobes, and are serviced by a luxurious four-piece family bathroom, complete with a jacuzzi bath—ideal for unwinding at the end of a long day. The high ceilings continue throughout, adding to the sense of space and elegance. The top floor offers the principal bedroom, which enjoys its own en-suite shower-room.

Outside, the home features an elevated decking area that leads onto over 50ft of beautifully maintained green space, perfect for outdoor dining, gardening, or simply enjoying some peace and quiet. The property also includes a private

- CHAIN FREE
- Substantial area of over 1600sqft living space
- Wash Room on Each floor
- Garage and Off Street Parking
- Under a 10 minute walk to Enfield Station
- Four Piece Modern Family Bathroom
- Elevated Decking for entertainment
- Modern Kitchen
- A must see!
- Offers will be considered

Viewing

Please contact our Cottage Fields Office on 020 3621 8621 if you wish to arrange a viewing appointment for this property or require further information.



4



3



Floor Plan

1608 Great Cambridge Road, Enfield, EN1 4SZ



Ground Floor Floor area 81.4 m² (876 Floor area 41.7 m² (449 sq.ft.) Second Floor Floor area 31.5 m² (339 sq.ft.)

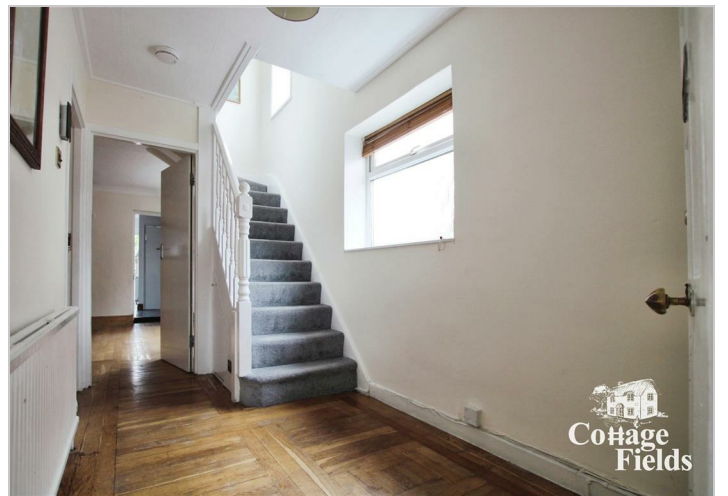
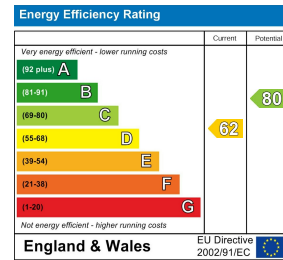
TOTAL: 154.6 m² (1,664 sq.ft.)

This floor plan is for illustrative purposes only. It is not drawn to scale. Any measurements, floor areas (including any total floor area), openings and orientations are approximate. No details are guaranteed, they cannot be relied upon for any purpose and do not form any part of any agreement. No liability is taken for any error, omission or misstatement. A party must rely upon its own inspection(s). Powered by www.propertybox.io

Area Map



Energy Efficiency Graph



These particulars, whilst believed to be accurate are set out as a general outline only for guidance and do not constitute any part of an offer or contract. Intending purchasers should not rely on them as statements of representation of fact, but must satisfy themselves by inspection or otherwise as to their accuracy. No person in this firm's employment has the authority to make or give any representation or warranty in respect of the property.

135 Lancaster Road, Enfield, EN2 0JN

Tel: 020 3621 8621 Email: sales@cottagefields.co.uk