



288a Alma Road

, Enfield, EN3 7BB

£1,700 Per Calendar Month

Prime First Floor Studio for Commercial Lettings in a busy location in Enfield.

Welcome to your next business venture location! Situated in a bustling commercial district at 288a Alma Road, Enfield, EN3, this expansive first-floor studio is perfect for a wide range of professionals. The studio boasts a generous floor plan providing ample space for various configurations, making it ideal for creative studios, offices, retail showrooms, or wellness practices.

Flexible Lease Terms of 5/10/20 Year options

No Premium

Three Months Rent in advance is required.

Three Months Deposit is required.

Security is a top priority with this property. The main entrance is protected by robust shutters, ensuring peace of mind for your business operations. Once inside, you'll be greeted a modern unit with inbuilt seating, creating an inviting and productive atmosphere. The dark decor can be changed to a bright and vibrant colour and open-plan design allow for easy customization to suit your brand and functional needs, whilst boasting three separate w/c's.

Located in a vibrant area with high foot traffic and excellent transport links, this studio is convenient for clients and employees alike. Enfield's thriving community offers a range of amenities, including cafes, restaurants, and local shops,

Viewing

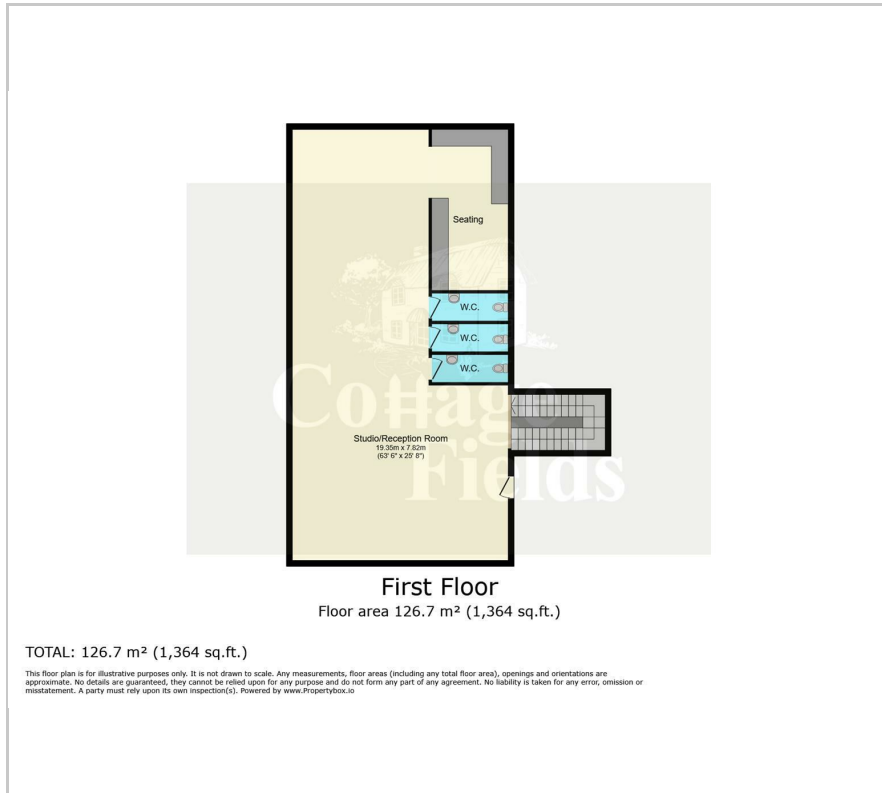
Please contact our Cottage Fields Office on 020 3621 8621 if you wish to arrange a viewing appointment for this property or require further information.

- NO PREMIUM (SECURE YOUR LEASE FOR FREE)
- Built In Seating
- Bundles of Potential
- Three Modern W/C's
- Secure Entrance with roller shutter.
- Available Immediately



Cottage Fields

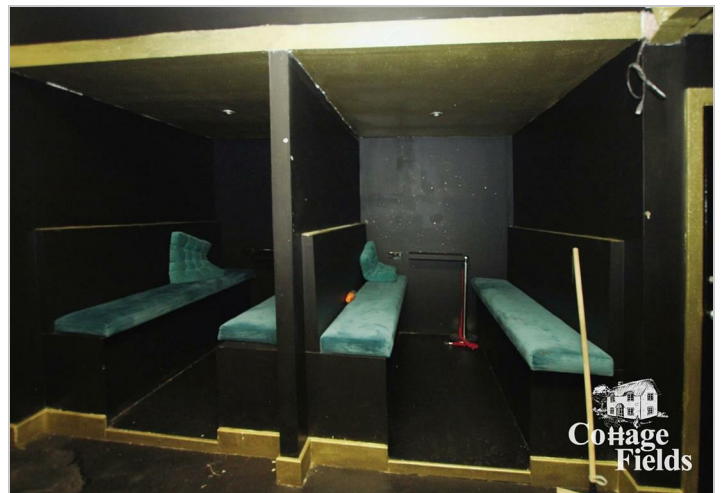
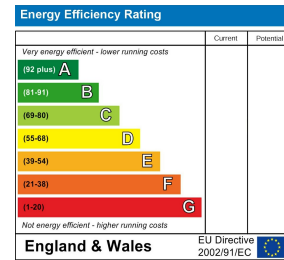
Floor Plan



Area Map



Energy Efficiency Graph



These particulars, whilst believed to be accurate are set out as a general outline only for guidance and do not constitute any part of an offer or contract. Intending purchasers should not rely on them as statements of representation of fact, but must satisfy themselves by inspection or otherwise as to their accuracy. No person in this firm's employment has the authority to make or give any representation or warranty in respect of the property.