



45 Riversfield Road

, Enfield, EN1 3DH

£3,000

Stunning extended family home situated in the popular Willow Estate, Enfield Town area within walking distance to local shopping centre, Enfield Town Overground Station (3 mins from Liverpool Street), Enfield Chase Railway Station (5 mins from Moorgate) and the M11.

The property benefits from a south facing garden, driveway with wired garage, and off-street parking for two cars.

Upon entering the property you will be greeted by the spacious open plan kitchen/dining area. This expansive kitchen is ideal for cooking and entertaining, featuring top-of-the-line appliances, ample storage space, and sleek, modern finishes. The island bar seamlessly connects the kitchen to the dining area, creating a bright and airy space perfect for family gatherings and social events.

The house boasts two generously sized double bedrooms, four-piece contemporary family bathroom and a downstairs cloakroom.

The south facing garden is an ideal spot for outdoor dining. The garden has been thoughtfully designed to be both beautiful and low-maintenance, providing a perfect outdoor retreat.

Additionally, the property includes a recently laid driveway, offering convenient off-street parking for two cars.

Viewing

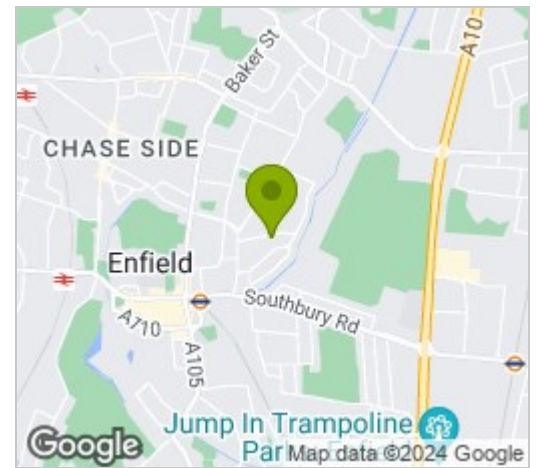
Please contact our Cottage Fields Office on 020 3621 8621 if you wish to arrange a viewing appointment for this property or require further information.



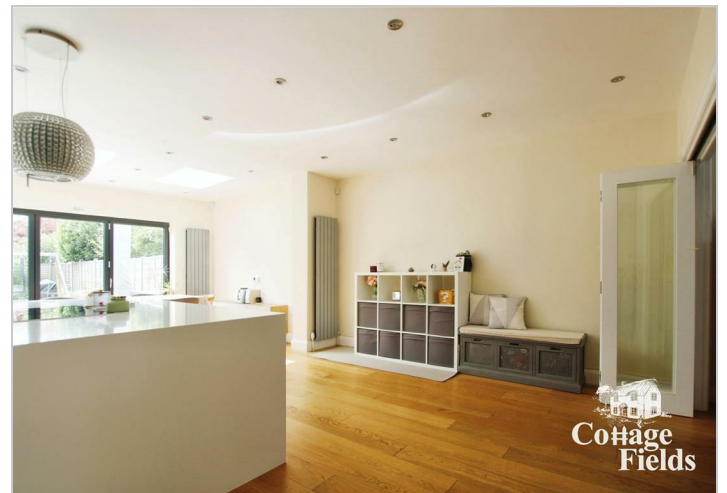
Floor Plan



Area Map



Energy Efficiency Graph



These particulars, whilst believed to be accurate are set out as a general outline only for guidance and do not constitute any part of an offer or contract. Intending purchasers should not rely on them as statements of representation of fact, but must satisfy themselves by inspection or otherwise as to their accuracy. No person in this firm's employment has the authority to make or give any representation or warranty in respect of the property.