

PCM  
**£850 PCM**  
**Emscote Road**  
Warwick, CV34 5QG

HANDLES  
PROPERTY

PN17 SKF

## PROPERTY SUMMARY

Gas, electric and water included in rent!!!!A spacious studio apartment a short walk from Warwick town centre. The property is offered furnished and comprises open planed kitchen, lounge with double bed and fitted wardrobes. There is a separate bathroom and use of a communal laundry room. There is off road parking to the front and rear of the building. Available 18th August 2025

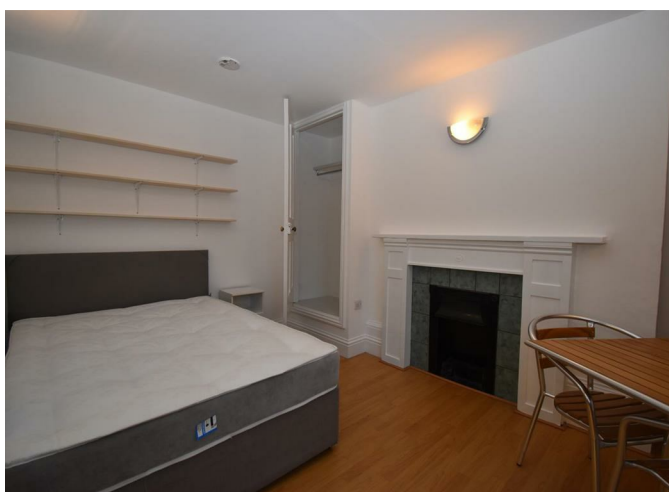
0



1



0





0



1



0



#### Energy Efficiency Rating

	Current	Potential
<i>Very energy efficient - lower running costs</i>		
(92 plus) <b>A</b>		
(81-91) <b>B</b>	80	84
(69-80) <b>C</b>		
(55-68) <b>D</b>		
(39-54) <b>E</b>		
(21-38) <b>F</b>		
(1-20) <b>G</b>		
<i>Not energy efficient - higher running costs</i>		
<b>England &amp; Wales</b>	EU Directive 2002/91/EC	

Agents Note: Whilst every care has been taken to prepare these particulars, they are for guidance purposes only. All measurements are approximate and are for general guidance purposes only and whilst every care has been taken to ensure their accuracy, they should not be relied upon and potential buyers/tenants are advised to recheck the measurements



#### OFFICE ADDRESS

8a Regent Street  
Leamington Spa  
Warwickshire  
CV32 5HO

#### OFFICE DETAILS

01926 354 400  
leamington@handlesproperty.co.uk