



PCM

£695 PCM

Regent Place

Leamington Spa, CV31 1EH

PROPERTY SUMMARY

A one bedroom property in popular residential location close to the town centre. This Apartment comprises a open plan kitchen and lounge area, Double bedroom, W/C and separate shower cubicle. Furnished and Available NOW

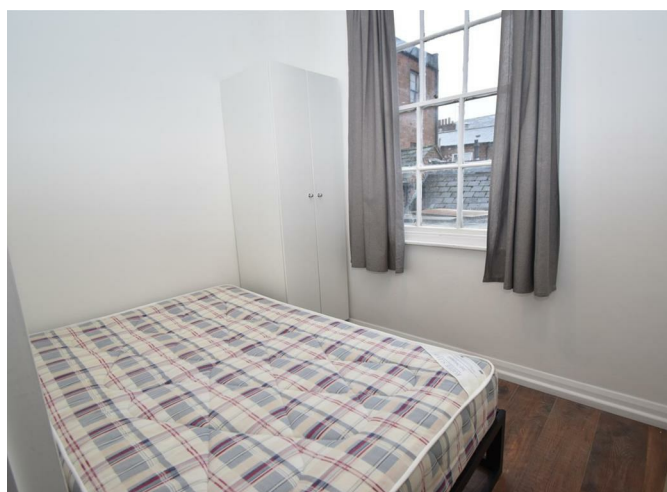
1



1



1



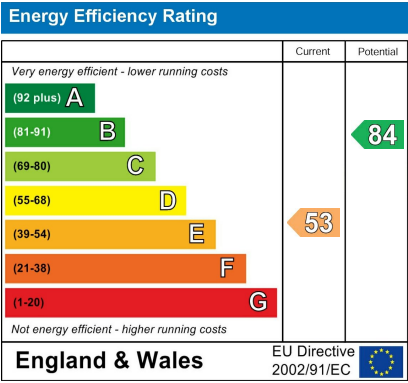
1

1

1







Agents Note: Whilst every care has been taken to prepare these particulars, they are for guidance purposes only. All measurements are approximate and are for general guidance purposes only and whilst every care has been taken to ensure their accuracy, they should not be relied upon and potential buyers/tenants are advised to recheck the measurements



OFFICE ADDRESS
8a Regent Street
Leamington Spa
Warwickshire
CV32 5HO

OFFICE DETAILS
01926 354 400
leamington@handlesproperty.co.uk