

PER CALENDAR MONTH
£995 Per Calendar Month
Albany Terrace
Leamington Spa, CV32 5LP

PROPERTY SUMMARY

A spacious, first floor apartment in a popular North Leamington location. The modern property has been finished to a high specification throughout. Comprising entrance hallway, Open Planed Lounge/Kitchen with a large box bay window, flooding the room with natural light. The double bedroom is a good size. There is also an exquisite shower room. Offered furnished and available late November.

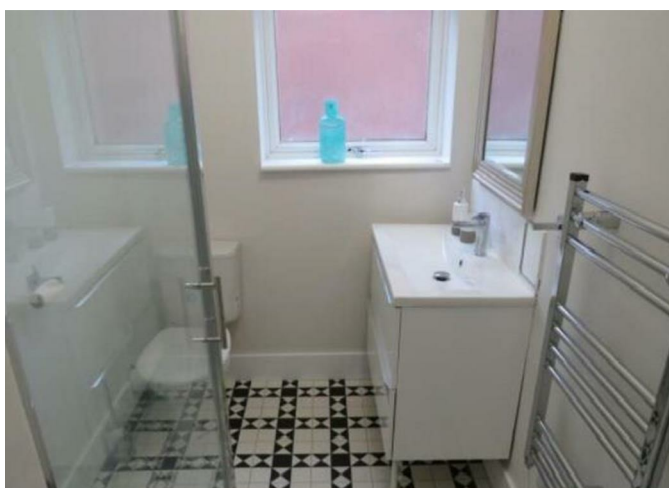
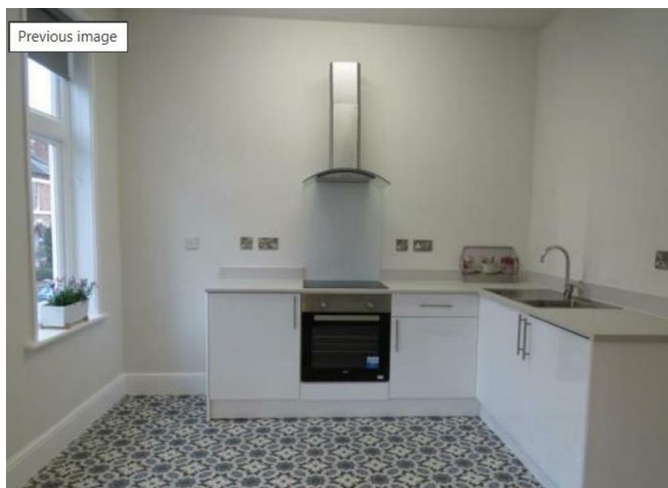
1



1



1



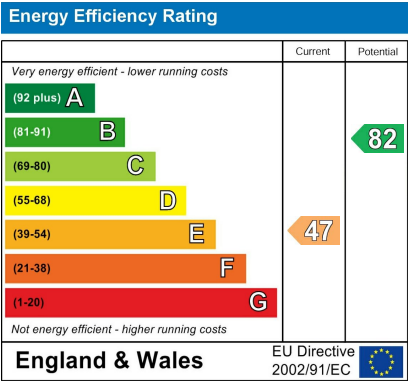
1

1

1







Agents Note: Whilst every care has been taken to prepare these particulars, they are for guidance purposes only. All measurements are approximate and are for general guidance purposes only and whilst every care has been taken to ensure their accuracy, they should not be relied upon and potential buyers/tenants are advised to recheck the measurements



OFFICE ADDRESS
8a Regent Street
Leamington Spa
Warwickshire
CV32 5HO

OFFICE DETAILS
01926 354 400
leamington@handlesproperty.co.uk