

PCM

£1,995 PCM

9 Dormer Place

Leamington Spa, CV32 5AA



## PROPERTY SUMMARY

Handles Property are delighted to offer this, immaculate, executive apartment in the heart of Leamington Spa. With stunning views over the Band Stand/Pump Room Gardens.

This fantastic duplex apartment combines modern fixtures and fittings with elegant original features.

Comprising entrance hallway, an impressive kitchen with island, opening to a lounge diner, there is also a great size double bedroom with study area and large ensuite

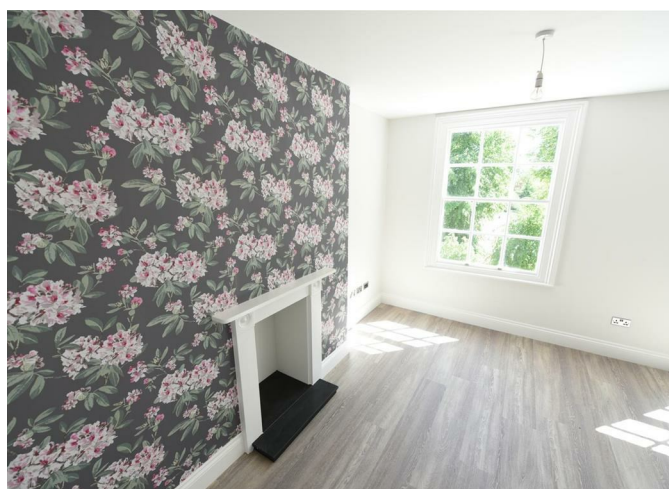
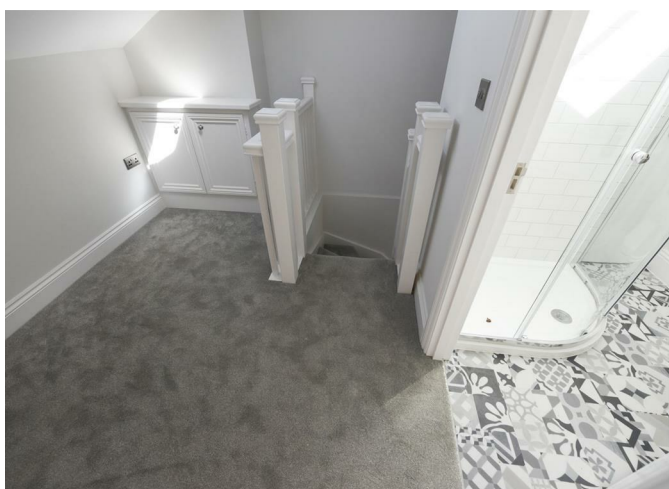
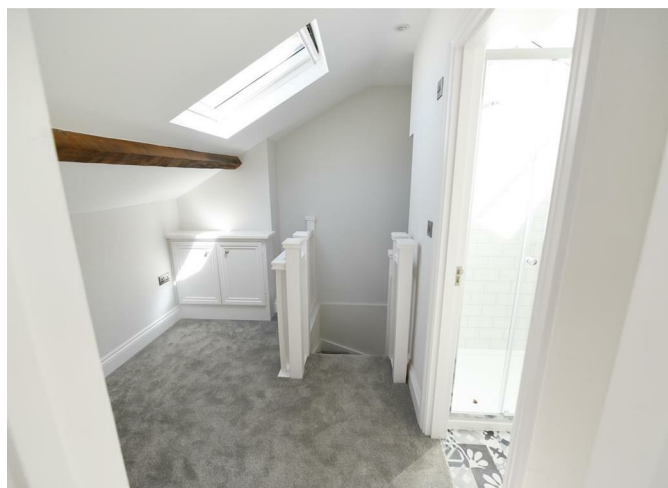
2



2



1









Energy Efficiency Rating		
	Current	Potential
Very energy efficient - lower running costs		
(92 plus) A		
(81-91) B		
(69-80) C	73	73
(55-68) D		
(39-54) E		
(21-38) F		
(1-20) G		
Not energy efficient - higher running costs		
England & Wales		EU Directive 2002/91/EC

Agents Note: Whilst every care has been taken to prepare these particulars, they are for guidance purposes only. All measurements are approximate and are for general guidance purposes only and whilst every care has been taken to ensure their accuracy, they should not be relied upon and potential buyers/tenants are advised to recheck the measurements



**OFFICE ADDRESS**  
8a Regent Street  
Leamington Spa  
Warwickshire  
CV32 5HO

**OFFICE DETAILS**  
01926 354 400  
leamington@handlesproperty.co.uk