



PCM

**£1,950 PCM**  
**2 Park Street**

Leamington Spa, CV32 4QN

## PROPERTY SUMMARY

**\*\*Ideal for 3 Sharers\*\*** A three double bedroom apartment in an exclusive development in Leamington Spa Town centre. This executive apartment is set over two floors and is located on the corner of Park Street, which is one of Leamington's unique boutique streets. Refurbished to a high specification throughout, the apartment features modern, fitted kitchens, finished with black granite worktops and AEG integrated appliances. Including oven, induction hobs, dishwasher, washer/dryer and a fridge freezer. Bedrooms are spacious doubles with the master benefiting from an ensuite. The luxury bathrooms are finished to an exceptional level and benefit from motion sensor, illuminated mirrors and under floor heating. The apartment also boast high quality secondary glazing and Luxury LG flooring. For the commuters, Leamington Spa train station is 0.7 miles away, and a short walk to bus routes out of the town. Offered part furnished and available mid August 2025.

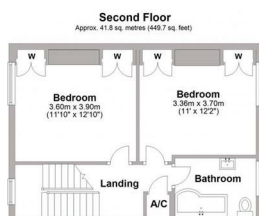
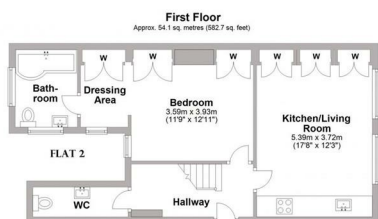
3



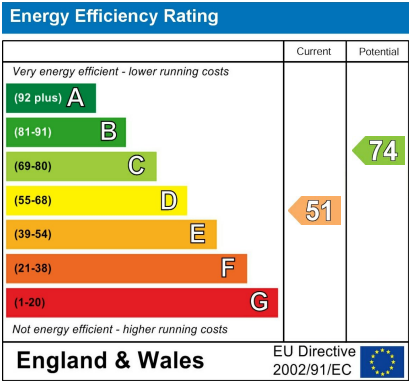
2



1







Agents Note: Whilst every care has been taken to prepare these particulars, they are for guidance purposes only. All measurements are approximate and are for general guidance purposes only and whilst every care has been taken to ensure their accuracy, they should not be relied upon and potential buyers/tenants are advised to recheck the measurements



**OFFICE ADDRESS**  
 8a Regent Street  
 Leamington Spa  
 Warwickshire  
 CV32 5HO

**OFFICE DETAILS**  
 01926 354 400  
[leamington@handlesproperty.co.uk](mailto:leamington@handlesproperty.co.uk)