



PCM

£2,000 PCM

23 Leam Terrace

Leamington Spa, CV31 1BB

PROPERTY SUMMARY

****STUDENT PROPERTY**** Five bedroom student apartment in an excellent location ideal for the town centre. Four bedrooms, two bath/shower rooms and open plan living area with kitchen. Viewing highly recommended. Available 1st September 2025.

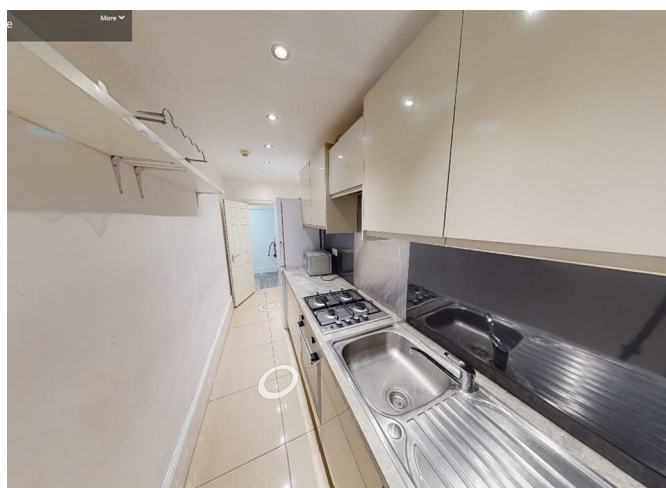
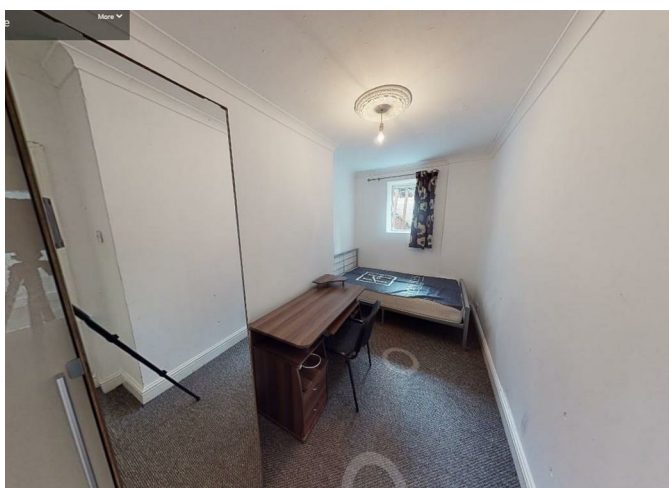
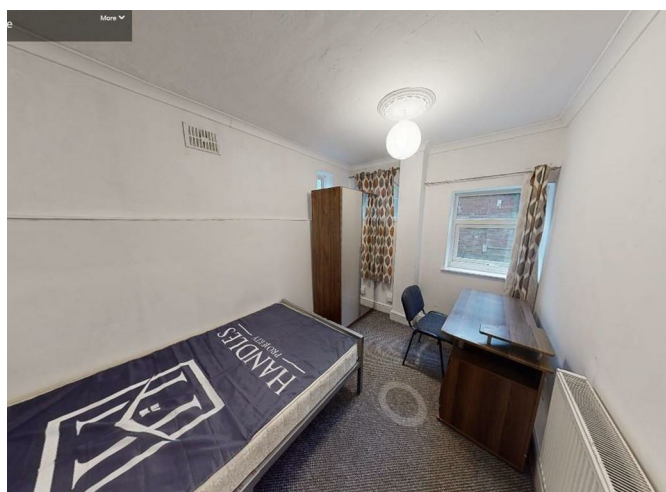
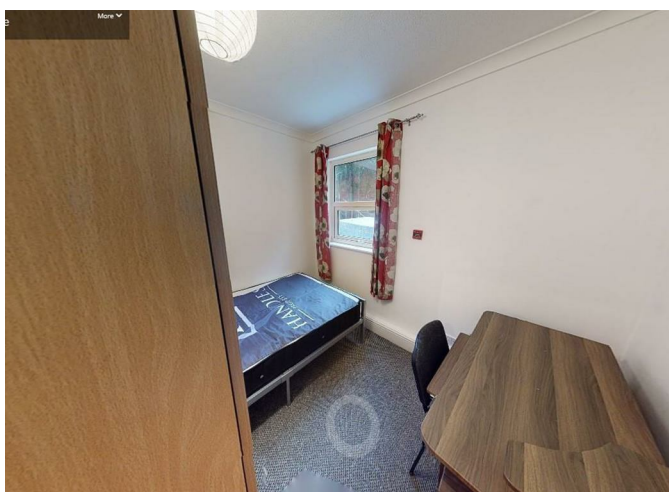
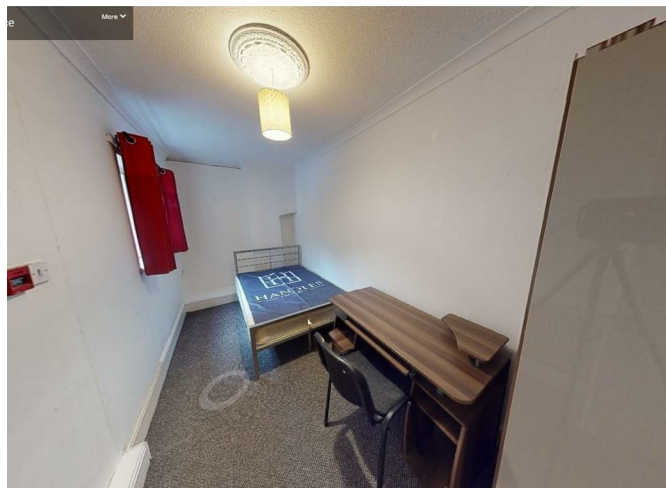
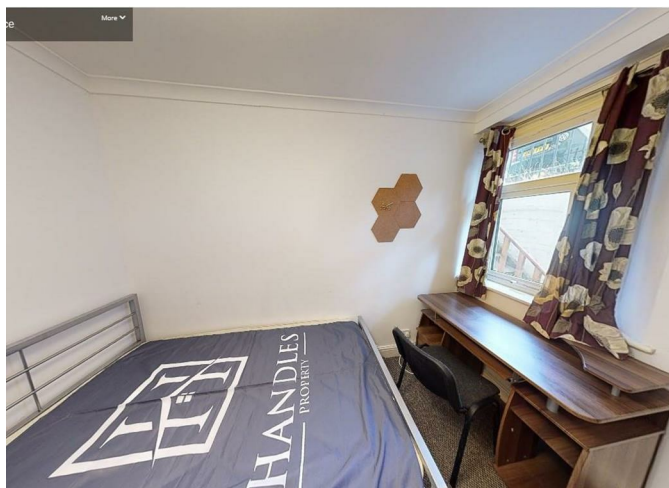
4

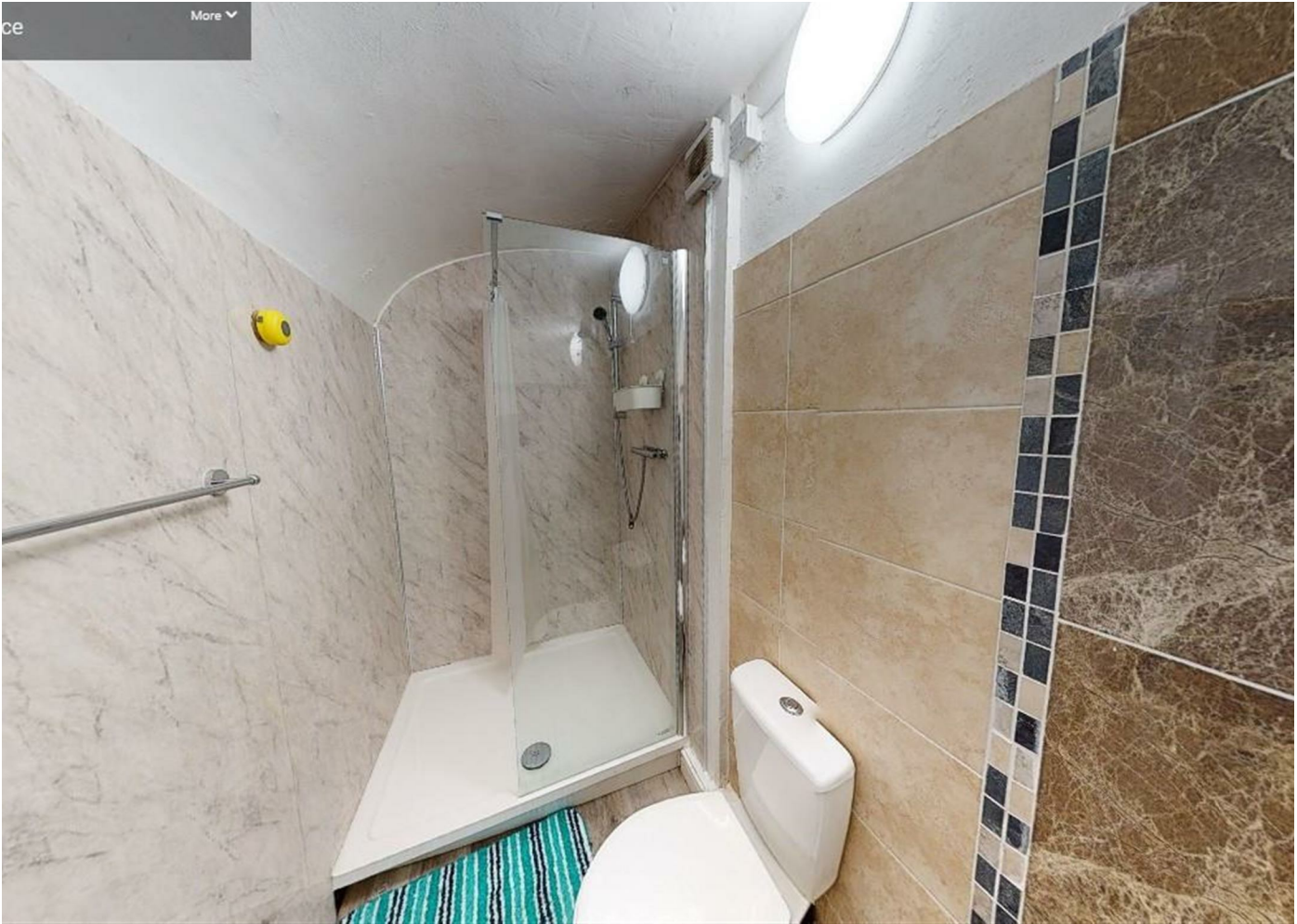
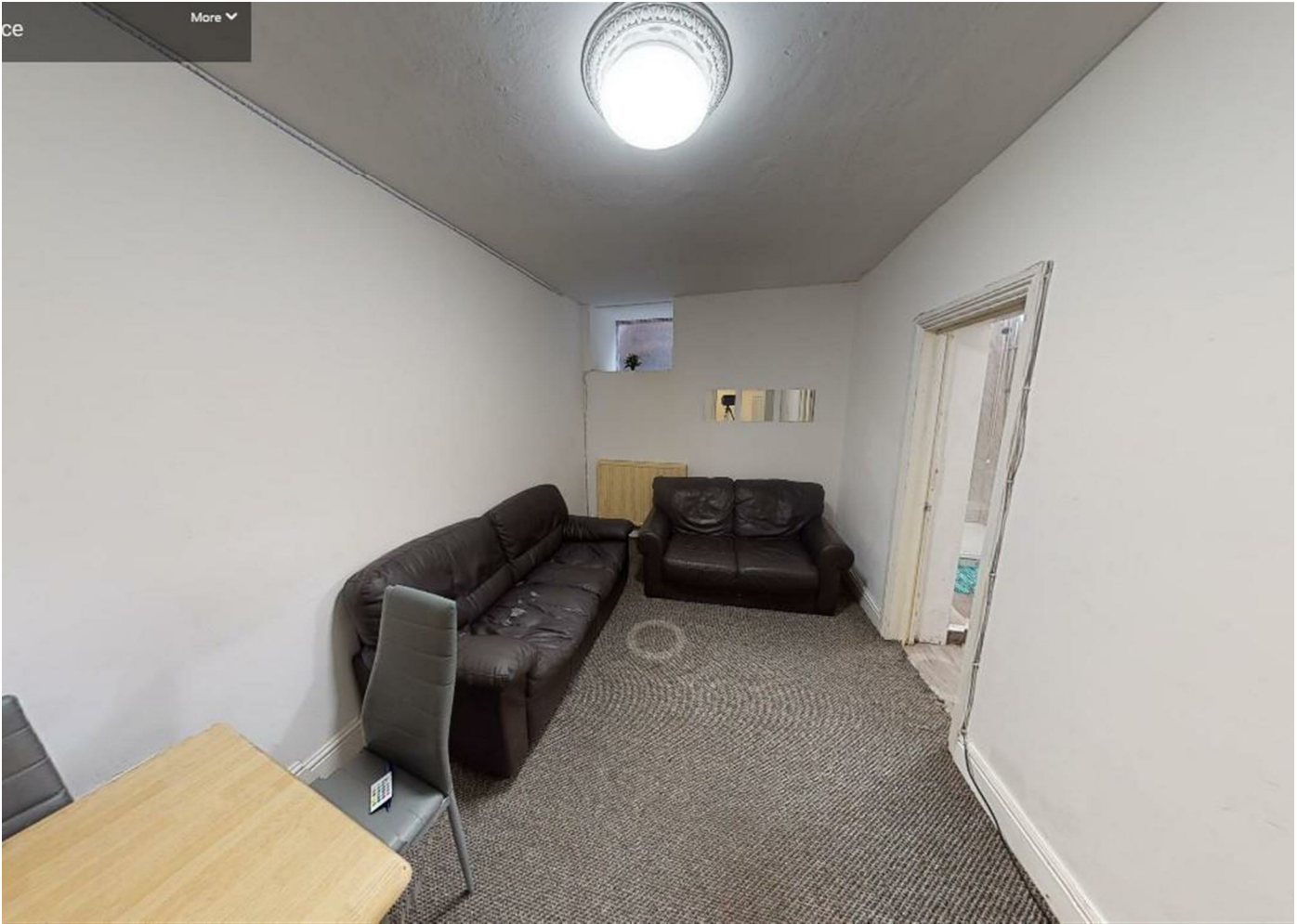


2



1



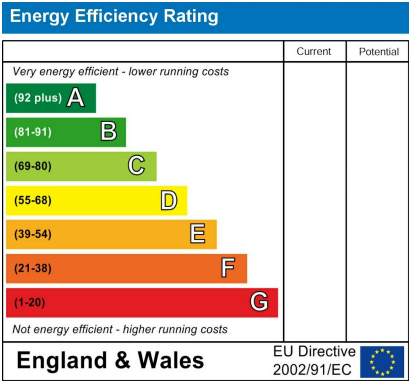




4

2

1



Agents Note: Whilst every care has been taken to prepare these particulars, they are for guidance purposes only. All measurements are approximate and are for general guidance purposes only and whilst every care has been taken to ensure their accuracy, they should not be relied upon and potential buyers/tenants are advised to recheck the measurements



OFFICE ADDRESS
 8a Regent Street
 Leamington Spa
 Warwickshire
 CV32 5HO

OFFICE DETAILS
 01926 354 400
leamington@handlesproperty.co.uk