



£390,000
Clarendon Square
Leamington Spa, CV32 5QX

PROPERTY SUMMARY

Share of Freehold – with over 950 years remaining on the lease

This elegant Grade II listed apartment truly stands out from the crowd – not only for its impressive size (nearly 1,400 square feet), but also for its refined finish and high-quality fixtures throughout. Set within the striking Regency architecture of Clarendon Square, it showcases the very best of Leamington Spas historic charm. The location is equally enviable, situated just a stone-s throw from the renowned Parade, placing shops, cafés, restaurants, and parks quite literally on your doorstep.

The property is accessed via a grand communal entrance hall, complete with stone flooring and a sweeping staircase leading to the penthouse.

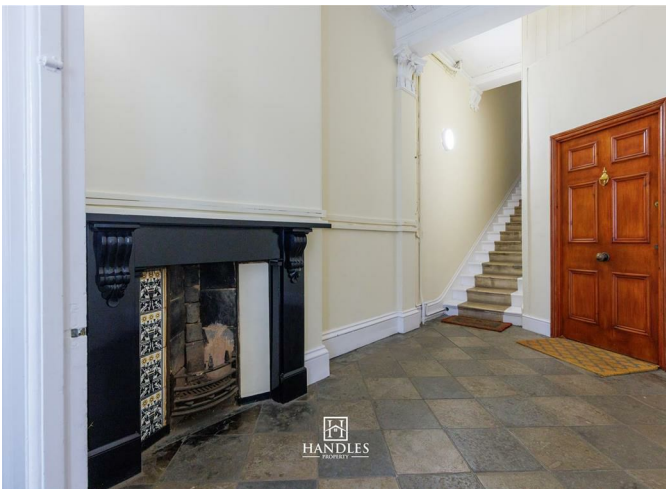
3



1



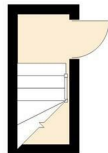
1



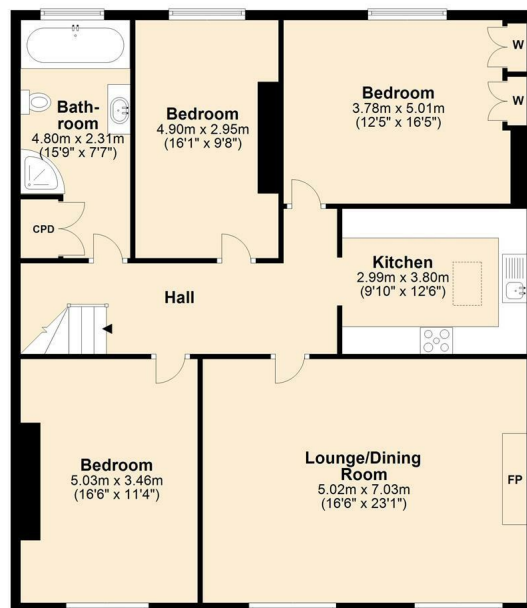




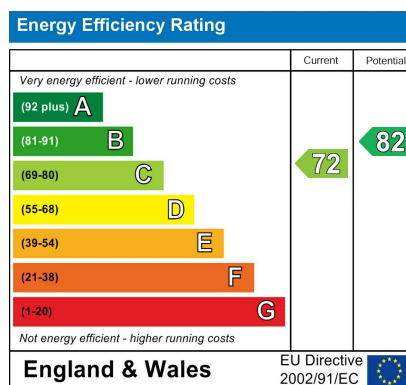
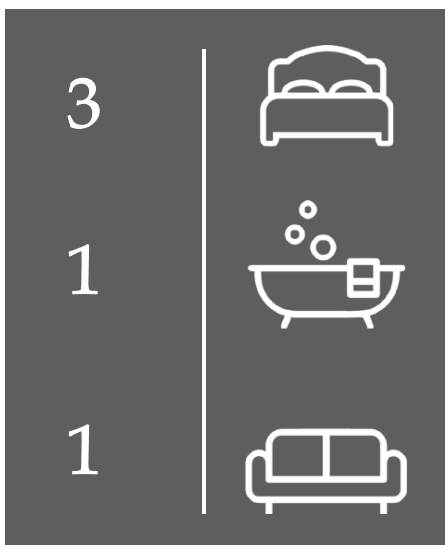
Second Floor



Third Floor



Total area: approx. 127.4 sq. metres (1371.0 sq. feet)



Agents Note: Whilst every care has been taken to prepare these particulars, they are for guidance purposes only. All measurements are approximate and are for general guidance purposes only and whilst every care has been taken to ensure their accuracy, they should not be relied upon and potential buyers/tenants are advised to recheck the measurements



OFFICE ADDRESS
8a Regent Street
Leamington Spa
Warwickshire
CV32 5HO

OFFICE DETAILS
01926 354 400
leamington@handlesproperty.co.uk