

OFFERS OVER
£380,000
Roxburgh Croft
Leamington Spa, CV32 7HT

PROPERTY SUMMARY

Tucked away in a quiet cul-de-sac on the northeast edge of Leamington Spa, this immaculate semi-detached bungalow is a real gem. What really sets it apart is the granted planning consent that opens the door to transforming it into a spacious, three-bedroom home with a generous open-plan living area. Thanks to the large plot, there's plenty of room to extend without compromising the outdoor space.

It's a great opportunity for anyone looking to put their own stamp on a place—design it to match your style, your needs, your vibe.

That said, if you're not up for a project, no worries. The bungalow is in pristine condition as it stands—just pack your bags, bring your clothes, and settle right in. Feet up, kettle on, you're home.

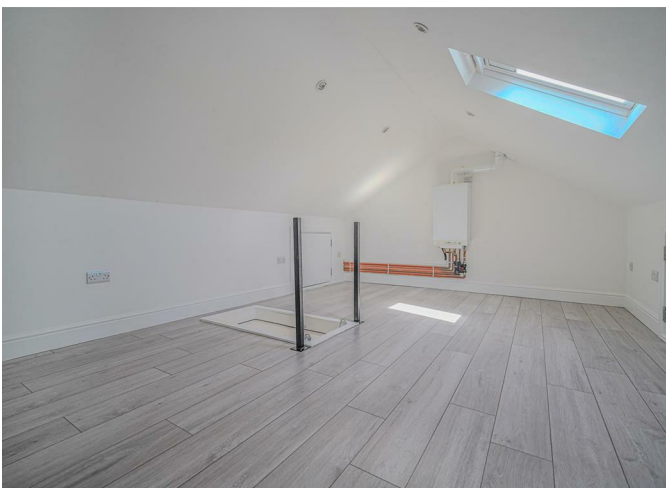
2



1



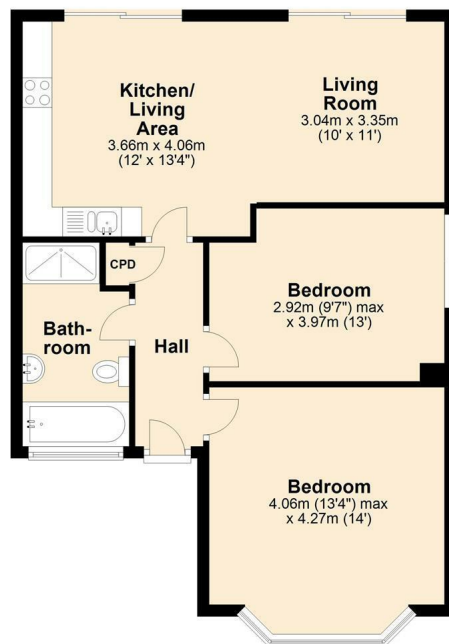
1



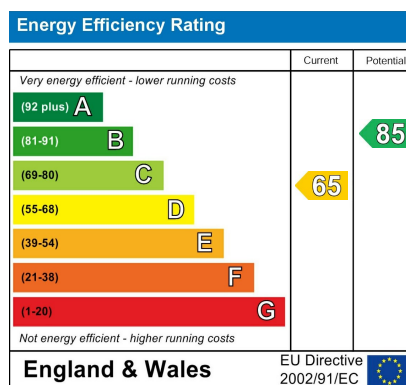
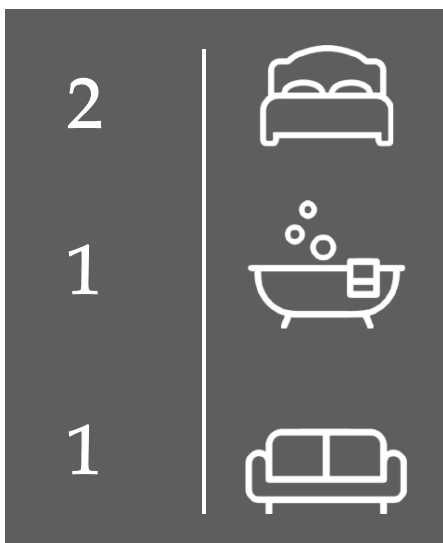
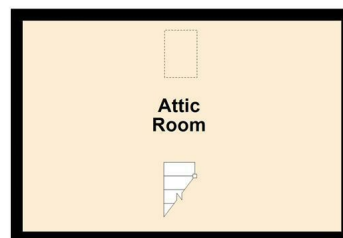




Ground Floor



First Floor



Agents Note: Whilst every care has been taken to prepare these particulars, they are for guidance purposes only. All measurements are approximate and are for general guidance purposes only and whilst every care has been taken to ensure their accuracy, they should not be relied upon and potential buyers/tenants are advised to recheck the measurements



OFFICE ADDRESS
8a Regent Street
Leamington Spa
Warwickshire
CV32 5HO

OFFICE DETAILS
01926 354 400
leamington@handlesproperty.co.uk