



PCM

£1,100 PCM

12 Warwick Place

Leamington Spa, CV32 5BJ

PROPERTY SUMMARY

Newly Renovated 2-Bed Garden Apartment Near Leamington Town Centre
GAS & WIFI INCLUDED - Available NOW!

This stylish and self-contained garden apartment offers modern living in one of Leamington's most popular locations. Recently renovated, the property features:

Two double bedrooms, each with its own en-suite shower room

A bright and spacious open-plan kitchen and living area

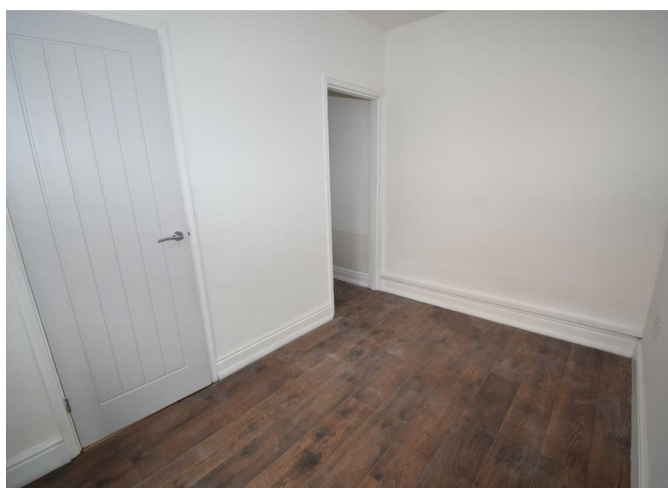
2



1



0





2




1



0



Energy Efficiency Rating

	Current	Potential
<i>Very energy efficient - lower running costs</i>		
(92 plus) A		
(81-91) B		
(69-80) C		
(55-68) D		
(39-54) E		
(21-38) F		
(1-20) G		
<i>Not energy efficient - higher running costs</i>		
England & Wales		EU Directive 2002/91/EC 

Agents Note: Whilst every care has been taken to prepare these particulars, they are for guidance purposes only. All measurements are approximate and are for general guidance purposes only and whilst every care has been taken to ensure their accuracy, they should not be relied upon and potential buyers/tenants are advised to recheck the measurements



OFFICE ADDRESS

8a Regent Street
Leamington Spa
Warwickshire
CV32 5HO

OFFICE DETAILS

01926 354 400
leamington@handlesproperty.co.uk