

PER MONTH  
**£750 Per Month**  
**Arundel Close**

Warwick, CV34 5HZ



## PROPERTY SUMMARY

A Beautifully presented, spacious double bedroom to rent in this Unique shared house. The room itself is situated on the first floor and has use of a shared bathroom. There is use of an additional study room, modern communal lounge & kitchen, as well as the impressive landscaped garden. To the front is ample off road parking. Bills Included and available 31st March 2025

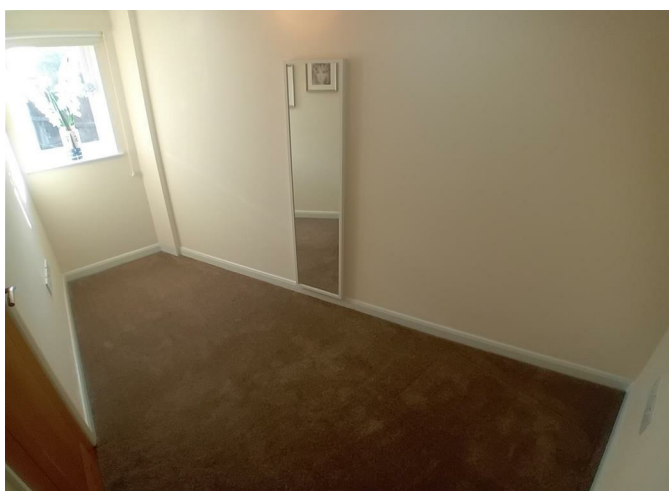
0



1



1









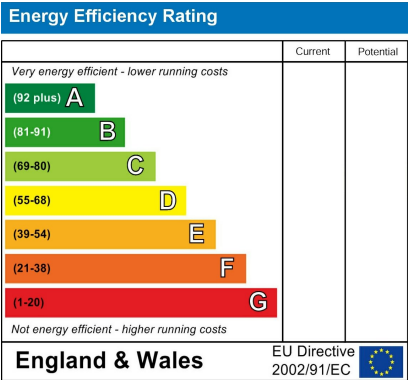
0

1

1







Agents Note: Whilst every care has been taken to prepare these particulars, they are for guidance purposes only. All measurements are approximate and are for general guidance purposes only and whilst every care has been taken to ensure their accuracy, they should not be relied upon and potential buyers/tenants are advised to recheck the measurements



OFFICE ADDRESS  
8a Regent Street  
Leamington Spa  
Warwickshire  
CV32 5HO

OFFICE DETAILS  
01926 354 400  
leamington@handlesproperty.co.uk