

PCM  
**£2,970 PCM**  
**Station House**  
Leamington Spa, CV31 3NS



## PROPERTY SUMMARY

**\*\*360 Virtual Tour on this STUDENT PROPERTY\*\*** \* Fabulous purpose built 6 bedroom student property with 2 bathrooms. With fitted furniture including double beds (4ft) and matching wardrobe, desk and bookcase. Located just a few minutes' walk to the South of the town centre the property is ideally situated opposite the railway station and benefits from onsite communal facilities including gym. FREE WI-FI Available 1st September.

6



2

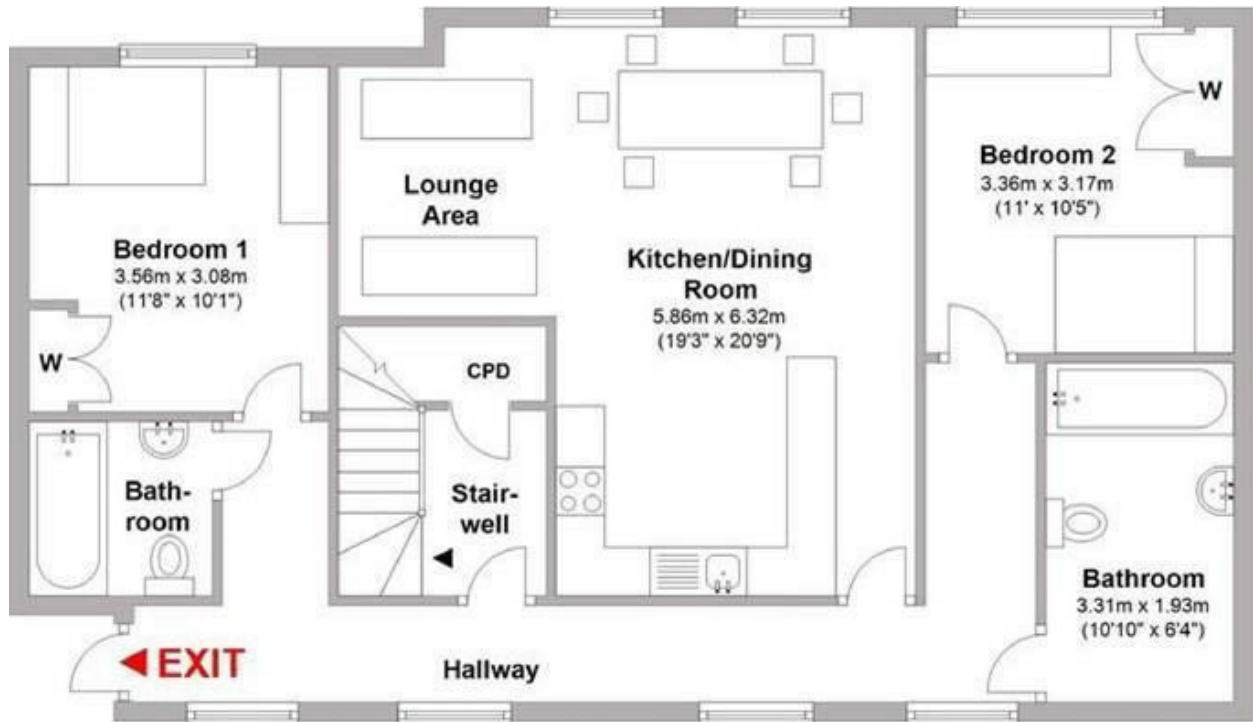


1









Energy Efficiency Rating		
	Current	Potential
Very energy efficient - lower running costs		
(92 plus) <b>A</b>		
(81-91) <b>B</b>		
(69-80) <b>C</b>	77	77
(55-68) <b>D</b>		
(39-54) <b>E</b>		
(21-38) <b>F</b>		
(1-20) <b>G</b>		
Not energy efficient - higher running costs		
<b>England &amp; Wales</b>	EU Directive 2002/91/EC	

Agents Note: Whilst every care has been taken to prepare these particulars, they are for guidance purposes only. All measurements are approximate and are for general guidance purposes only and whilst every care has been taken to ensure their accuracy, they should not be relied upon and potential buyers/tenants are advised to recheck the measurements



**OFFICE ADDRESS**  
8a Regent Street  
Leamington Spa  
Warwickshire  
CV32 5HO

**OFFICE DETAILS**  
01926 354 400  
leamington@handlesproperty.co.uk  
handlesproperty.co.uk