

GUIDE PRICE
£1,300,000
Dotterell Grange
Owlswick, HP27 9RH

PROPERTY SUMMARY

Firecrest Grange at The Green - A brand new exclusive development of just 9 homes by Kendrick Homes in the charming village of Owlswick. Further land available. View Home Open Thursday to Monday 10am to 4pm.

Introducing The Green at Owlswick: Where Modern Luxury Meets Serene Living

Discover the epitome of contemporary living with a touch of rustic charm at The Green in Owlswick. Nestled within this idyllic village setting, each residence exudes sophistication and comfort, reflecting the prestigious style reminiscent of Soho House.

Firecrest Grange - Grandeur Redefined

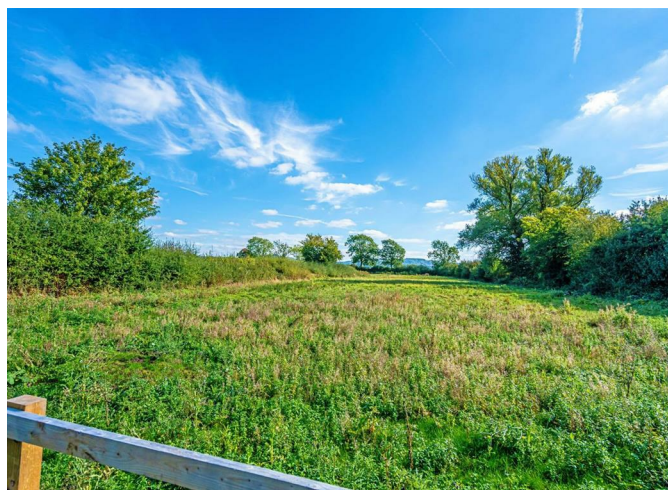
4



3



2







Dotterel Grange

4 bedroom home
Plot 7 (detached)

First floor

Bedroom 1
4836 x 4150mm (15'10" x 13'7")

Ensuite
2488 x 1958mm (8'2" x 6'5")

Dressing Area
3182 x 1650mm (10'5" x 5'5")

Bedroom 2
4040 x 3800mm (13'3" x 12'6")

Ensuite
2419 x 2373mm (7'11" x 7'9")

Bedroom 3
3800 x 3567mm (12'6" x 11'8")



Bedroom 4
4150 x 3243mm (13'7" x 10'8")

Bathroom
3005 x 2294mm (9'10" x 7'6")



Energy Efficiency Rating		
	Current	Potential
Very energy efficient - lower running costs		
(92 plus) A		
(81-91) B		
(69-80) C		
(55-68) D		
(39-54) E		
(21-38) F		
(1-20) G		
Not energy efficient - higher running costs		
England & Wales		EU Directive 2002/91/EC

Agents Note: Whilst every care has been taken to prepare these particulars, they are for guidance purposes only. All measurements are approximate and are for general guidance purposes only and whilst every care has been taken to ensure their accuracy, they should not be relied upon and potential buyers/tenants are advised to recheck the measurements



OFFICE ADDRESS
8a Regent Street
Leamington Spa
Warwickshire
CV32 5HO

OFFICE DETAILS
01926 354 400
leamington@handlesproperty.co.uk