



PCM  
**£895 PCM**  
**Arundel Close**  
Warwick, CV34 5HZ



## PROPERTY SUMMARY

A Beautifully presented, spacious double bedroom to rent in this Unique shared house. The room itself is situated on the top floor and has its own walk in shower. The room is furnished throughout, and has ample storage. There is use of the modern communal lounge & kitchen as well as the impressive landscaped garden. To the front is ample off road parking. Bills Included and available end March.

\*\* Additional Office Space available by negotiation. \*\*

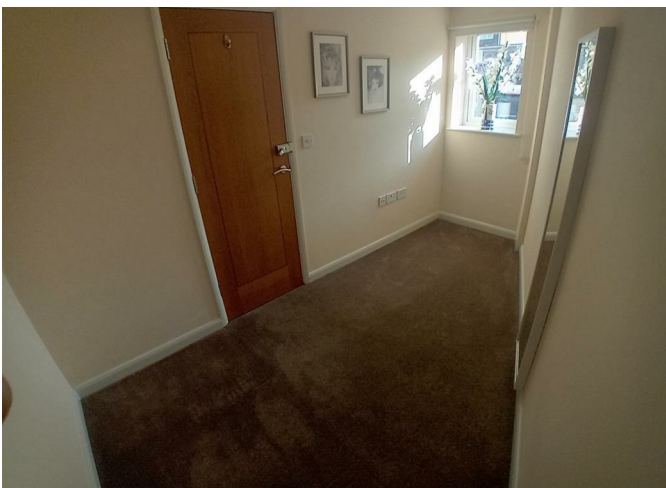
0



1



1











0

1

1

Energy Efficiency Rating		
	Current	Potential
Very energy efficient - lower running costs		
(92 plus) <b>A</b>		
(81-91) <b>B</b>		
(69-80) <b>C</b>		
(55-68) <b>D</b>		
(39-54) <b>E</b>		
(21-38) <b>F</b>		
(1-20) <b>G</b>		
Not energy efficient - higher running costs		
<b>England &amp; Wales</b>		EU Directive 2002/91/EC

Agents Note: Whilst every care has been taken to prepare these particulars, they are for guidance purposes only. All measurements are approximate and are for general guidance purposes only and whilst every care has been taken to ensure their accuracy, they should not be relied upon and potential buyers/tenants are advised to recheck the measurements

**OFFICE ADDRESS**

8a Regent Street  
Leamington Spa  
Warwickshire  
CV32 5HO

**OFFICE DETAILS**

01926 354 400  
leamington@handlesproperty.co.uk