



TO LEASE

Amazing opportunity to lease this town centre located second and third floor unit

Previously a successful cafe this recently refurbished unit is ready to go for a variety of uses (subject to planning)

In the heart of Lowestoft town centre and benefitting from a high footfall location, this unit boasts an airy, light filled feel with the privacy of a second floor main unit, with further rooms and toilet facilities on the third floor

Please call for a viewing

Recently refurbished

Ready to occupy

Town centre location

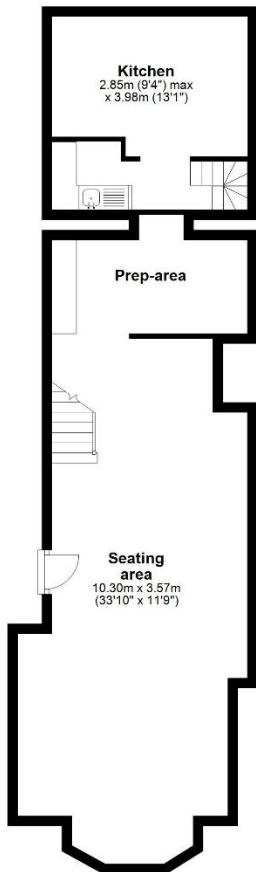
Great footfall

Multiple rooms

Variety of uses

Ground Floor

Approx. 65.3 sq. metres (702.4 sq. feet)



First Floor

Approx. 62.6 sq. metres (673.7 sq. feet)



Total area: approx. 127.8 sq. metres (1376.1 sq. feet)

Disclaimer: Please note this floor plan is for marketing purposes and is to be used as a guide only. All efforts have been made to ensure its accuracy at time of print. Plan produced using PlanUp.

**Monthly
Rental Of £900**

**2 Surrey Street
Lowestoft
Suffolk
NR32 1LJ**

If you wish to view the property or require any further information, please contact us by one of the following options:

Telephone: 01502 446000

E-mail: info@steelandco.co.uk

You can find us at:

**Steel and Co
92 High Street
Lowestoft
Suffolk
NR32 1XW**

Steel and Co do not guarantee the accuracy of these particulars, dimensions, permission for use or references to condition which are for the guidance of prospective tenants or purchasers and do not constitute the whole or part of an offer. Prospective tenants or purchasers must satisfy themselves as to the suitability of the premises and conduct their own due diligence. Application fees may apply.