

## FOR LEASE

### Large Shop Front with TWO PARKING SPACES

Retail space available for lease in the historic High Street located on the good foot fall area of the Triangle Market

Adaptable space with customer/staff WCs

Amazing opportunity, please call for a viewing

---

**Two parking spaces**

---

**Large shop front**

---

**Customer WC**

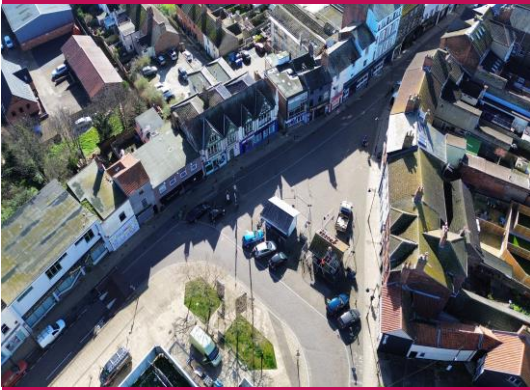
---

**Good footfall area**

---

**Ready to occupy**

---

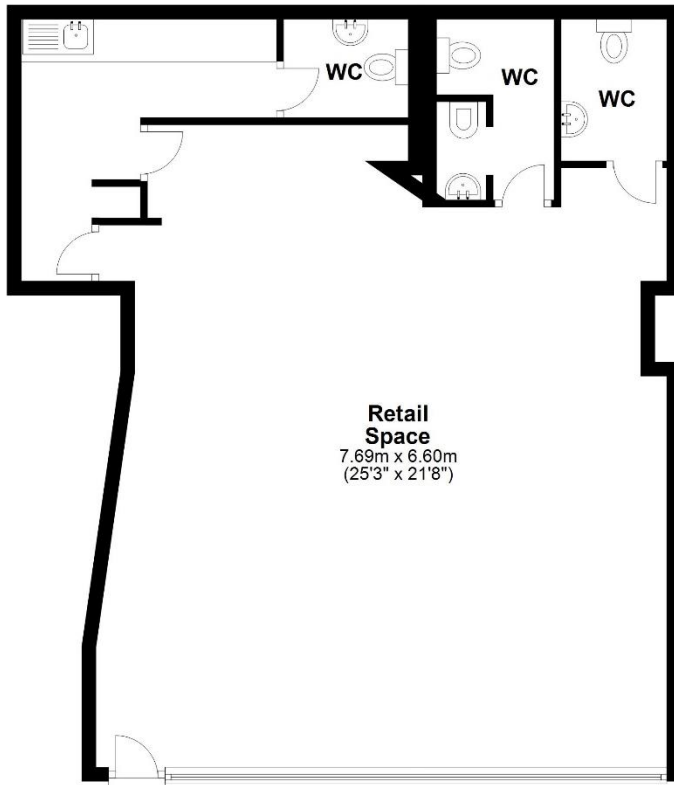


4/4/24, 12:45 PM

Enerov performance certificate (EPC) - Find an enerov certificate - GOV.UK

**Ground Floor**

Approx. 86.4 sq. metres (930.4 sq. feet)



Total area: approx. 86.4 sq. metres (930.4 sq. feet)

Disclaimer: Please note this floor plan is for marketing purposes and is to be used as a guide only. All efforts have been made to ensure its accuracy at time of print  
Plan produced using PlanUp.

**Annual Rental  
Of £11,000**

**91 High Street  
Lowestoft  
Suffolk  
NR32 1XW**

**If you wish to view the property or  
require any further  
information, please contact us by  
one of the following options:**

**Telephone: 01502 446000**

**E-mail: [info@steelandco.co.uk](mailto:info@steelandco.co.uk)**

**You can find us at:**

**Steel and Co  
92 High Street  
Lowestoft  
Suffolk  
NR32 1XW**

Steel and Co do not guarantee the accuracy of these particulars, dimensions, permission for use or references to condition which are for the guidance of prospective tenants or purchasers and do not constitute the whole or part of an offer. Prospective tenants or purchasers must satisfy themselves as to the suitability of the premises and conduct their own due diligence. Application fees may apply.