



## **FOR SALE**

### **INVESTMENT PROPERTY**

This promising retail unit, is situated on Bevan Street, in the heart of Lowestoft's busy Town Centre

This property is close to all local amenities including the Train Station and bus routes

The unit has substantial shop frontage, and consists of an open retail space on the ground floor with a staircase leading up to the second floor currently used as storage

Please call for a viewing

**Prominent town centre location**

**Established business area**

**Close to all local amenities**

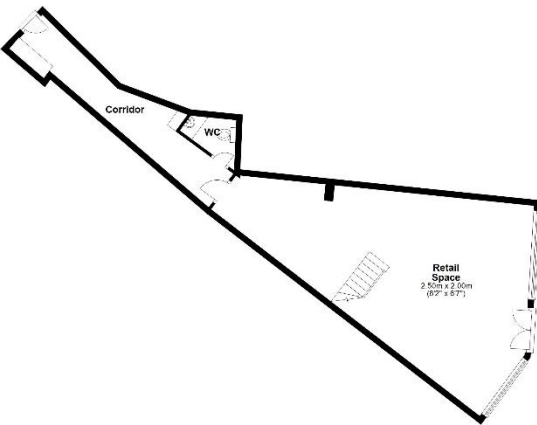
**Great footfall**

**Substantial shop frontage**

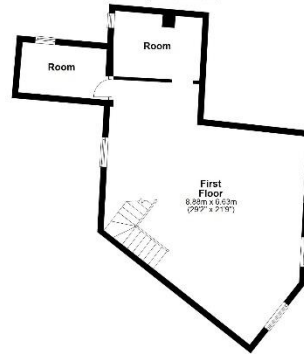
**£97,000**

**9 Bevan Street East  
Lowestoft  
Suffolk  
NR32 2AA**

**Ground Floor**  
Approx. 87.3 sq. metres (950.9 sq. feet)



**First Floor**  
Approx. 50.9 sq. metres (548.9 sq. feet)



Total area: approx. 113.7 sq. metres (1224.2 sq. feet)

Disclaimer: Please note this floor plan is for marking purposes and is not to scale. We advise you to visit the property to ensure its accuracy and to verify all dimensions and measurements.

If you wish to view the property or require any further information, please contact us by one of the following options:

Telephone: 01502 446000

E-mail: [info@steelandco.co.uk](mailto:info@steelandco.co.uk)

You can find us at:

**Steel and Co  
92 High Street  
Lowestoft  
Suffolk  
NR32 1XW**

Steel and Co do not guarantee the accuracy of these particulars, dimensions, permission for use or references to condition which are for the guidance of prospective tenants or purchasers and do not constitute the whole or part of an offer. Prospective tenants or purchasers must satisfy themselves as to the suitability of the premises and conduct their own due diligence. Application fees may apply.