



7 Lansdowne Street, Hove, BN3 1FS
£1,150 Per month



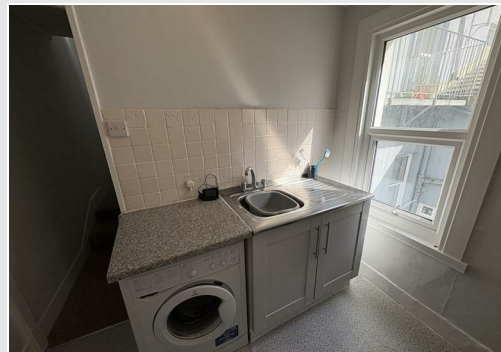
- Unfurnished
- Central Location
- One Double Bedroom



- Top Floor
- Recently re-decorated
- Gas central heating

7 Lansdowne Street, Hove, BN3 1FS

£1,150 Per month



Summary

UNFURNISHED, RECENTLY REDECORATED, TOP FLOOR ONE BEDROOM FLAT IN CENTRAL HOVE.

Nestled in the heart of Hove, Lansdowne Street presents a charming opportunity for those seeking a delightful central flat. This top-floor residence boasts a well-proportioned bedroom, a comfortable reception room, making it an ideal choice for individuals or couples looking for a cosy yet stylish living space.

Recently repainted throughout, the flat exudes a fresh and inviting atmosphere, ready for you to make it your own. The property benefits from gas heating, ensuring warmth and comfort during the cooler months. Its central location means you are just a stone's throw away from the vibrant amenities that Hove has to offer, including shops, cafes, and parks, all within easy reach.

Kitchen

Grey shaker style kitchen with oven, hob and fridge freezer. Granite effect worktops.

Useful Information

Parking Zone - M
Council Tax - A
EPC - C

Lounge

12'6x16'4 (3.66m'1.83mx4.88m'1.22m)

Good size lounge with wooden effect flooring and east facing bay window

Bedroom

12'8x9'7 (3.66m'2.44mx2.74m'2.13m)

Double bedroom with wooden effect flooring. Built in wardrobe and desk area.

Shower Room

Part tiled shower room with walk in shower cubicle, WC, wash hand basin and mirror cabinet

| Energy Efficiency Rating | | |
|---|---------|-----------|
| | Current | Potential |
| Very energy efficient - lower running costs | | |
| (92 plus) A | | |
| (81-91) B | | |
| (69-80) C | | |
| (55-68) D | | |
| (39-54) E | | |
| (21-38) F | | |
| (1-20) G | | |
| Not energy efficient - higher running costs | | |
| England & Wales | | |
| EU Directive 2002/91/EC | | |

