



80 Birches Road, Codsall

THOMAS HARVEY
ESTATE AGENTS

An Individually Designed Three/ Four Bedroom Three Bathroom Modern Detached Family House In One Of Codsall's Favoured Addresses & Features A Most Impressive Interior With A Host Of High Quality Fittings

80 Birches Road, Codsall, Wolverhampton, WV8 2JR

Asking Price: £580,000

Tenure: Freehold

Council Tax: Band F – South Staffordshire

EPC Rating: C (77) No: 0320-2137-4360-2094-3961

Total Floor Area: 2325sq feet (216.0sq metres) Approx.

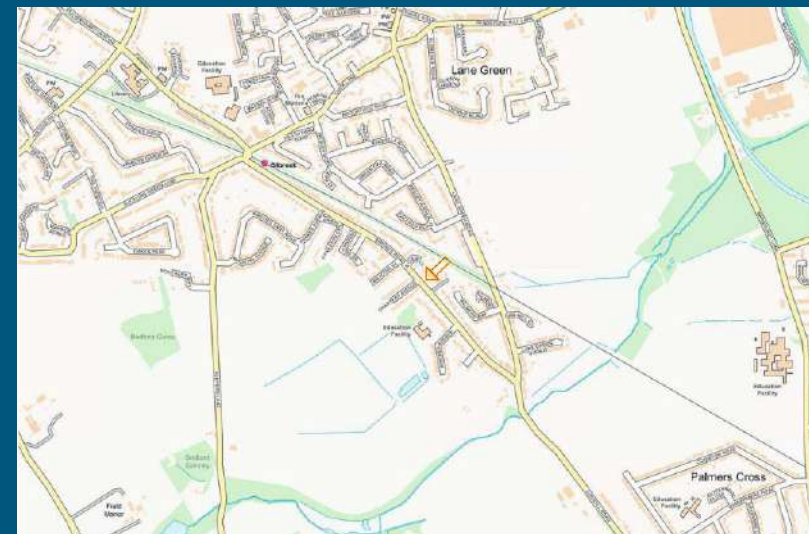
Services: We are informed by the Vendors that all main services are installed

Situated in one of the most sought after locations in Codsall, screened and set well back from the road, this deceptive and individually designed detached property has been constructed by present owners design to create a most impressive and spacious first class family home with no expense spared.

Although only built in 2003, in recent years, 80 Birches Road has been refurbished to a most superior standard providing a host of high quality fittings throughout and therefore viewing of the interior is essential to appreciate the spacious & stunning living accommodation. A number of features include the oak effect double glazed windows & doors, internal hardwood doors, stylishly appointed décor throughout, tasteful carpets & flooring including ground floor Karndean underfloor heating, luxury bathrooms and a stunning open plan kitchen with family & dining area.

At approximately 2,325 ft versatile and extensive accommodation includes large reception hall with utility room and custom designed C-Shaped staircase to the first floor, 24ft front living room with feature brick fireplace with log burner stove and a most useful hobbies room which could be used for a multitude of purposes i.e. home gym, office, playroom or of course a ground floor bedroom. At the rear of the house is the open plan kitchen with family & dining area, which is fitted with an extensive suite of units and a range of built in appliances. Adjacent is a utility room with fitted cloakroom. On the first floor the galleried landing leads to the master bedroom suite with a walk in wardrobe/ dressing area, luxury ensuite shower room and two French doors overlooking the rear garden. There are a further two double bedroom and both the ensuite & family bathroom are fitted with bespoke suites. At the front of the house is a gravelled driveway screened from the road via brick walls and providing off road parking for several cars. As 80 Birches Road enjoys a generous plot of approx. 0.2acres, the fully stocked 150ft long rear garden has been landscaped to provide a most pleasant setting whilst offering the maximum privacy including a large timber workshop/ storage, fish pool and a detached 'log cabin' style summerhouse with power & lighting, therefore making it a most useful space and providing further living accommodation.

Within walking distance of the majority of amenities including excellent schools, shops and Bilbrook train station, internal inspection is highly recommended to appreciate this most delightful property being a superb example of its type and perfect for buyers, requiring a stunning property, ready to just move into!



Score	Energy rating	Current	Potential
92+	A		
81-91	B		82 B
69-80	C	77 C	
55-68	D		
39-54	E		
21-38	F		
1-20	G		



T: 01902 758111

E: properties@thomasharvey.co.uk

W: www.thomasharvey.co.uk

A: 1 The Arcade, High Street, Tettenhall, Wolverhampton WV6 8QS



Reception Hall: 14'3" (4.35m) x 13'1" (4.00m)

PVC double glazed double doors, recessed ceiling spotlights, coved ceiling, Karndean flooring with underfloor heating and bespoke C-Shaped staircase with LED floor lighting to first floor.

Utility / Storage Room: A range of floor to ceiling built in storage units, recessed ceiling spotlights, wall mounted gas fired central heating boiler & water heating system, built in base cupboards, LED lighting and Karndean flooring with underfloor heating.

Living Room: 23'11" (7.30m) x 19'8" (6.00m)

Feature full height brick fireplace with matching hearth & log burner stove, recessed ceiling spotlights, coved ceiling, Karndean flooring with underfloor heating and double glazed windows to side with matching bow window to front.

Hobbies Room/ Bedroom: 17'9" (5.40m) x 8'6" (2.60m)

Full width feature wall with storage & media space, coved ceiling, recessed ceiling spotlights, Karndean flooring with underfloor heating and double glazed leaded window to front.

Open Plan Kitchen with Family & Dining Area: 19'8" (6.00m) x 19'8" (6.00m)

Fitted with an extensive suite of matching laminate style units comprising double drainer sink unit with stainless steel mixer tap, a range of base cupboards & drawers with matching worktops, a range of built in appliances includes 4-set AEG ovens, separate microwave, 5-gas hob with stainless steel extractor hood over, fridge, freezer and dishwasher, coved ceiling, recessed ceiling spotlights, Karndean flooring with underfloor heating and double glazed window to rear with matching French doors to decking area.

Utility: 8'6" (2.60m) x 7'3" (2.20m)

Built in base cupboards with matching worktop & single drainer sink unit, coved suspended wall cupboards, coved ceiling, recessed ceiling spotlights, Karndean flooring with underfloor heating and double glazed window to rear with matching door. **Downstairs WC:** Low level WC, coved ceiling, recessed ceiling spotlight and Karndean flooring with underfloor heating.

First Floor Galleried Landing: Two white period style radiators, coved ceiling, double glazed opaque window to side and loft hatch with pull down ladder.

Bedroom One: 19'8" (6.00m) x 13'7" (4.15m)

Two white period style vertical radiators, coved ceiling, recessed ceiling spotlights and two sets of double glazed double doors to balcony area. **Archway to Dressing Room:** Fitted with custom made wardrobes, storage, dressing area and recessed ceiling spotlights.

Ensuite: 6'11" (2.10m) x 6'7" (2.00m)

Fitted with a luxury suite comprising feature shower cabin with LED lighting, Bluetooth, multifunction shower heads, steam & sauna function, massage feature & body jets, a full width vanity unit & storage with recessed WC, white vertical radiator, tiled walls, coved ceiling, Karndean flooring and double glazed opaque window to side.

Bedroom Two: 17'9" (5.40m) x 9'10" (3.00m)

White vertical period style radiator, coved ceiling, recessed ceiling spotlights, laminate flooring and double glazed windows to side and front.

Ensuite: 6'11" (2.10m) x 6'7" (2.00m)

Fitted with a luxury suite comprising feature shower cabin with LED lighting, Bluetooth, multifunction shower heads, steam & sauna function, massage feature & body jets, a full width vanity unit & storage with recessed WC, white vertical radiator, tiled walls, coved ceiling and Karndean flooring.

Bedroom Three: 14'1" (4.30m) x 9'10" (3.00m)

White vertical period style radiator, coved ceiling, recessed ceiling spotlights and double glazed window to front.

Bathroom: 7'9" (2.35m) x 6'3" (1.90m)

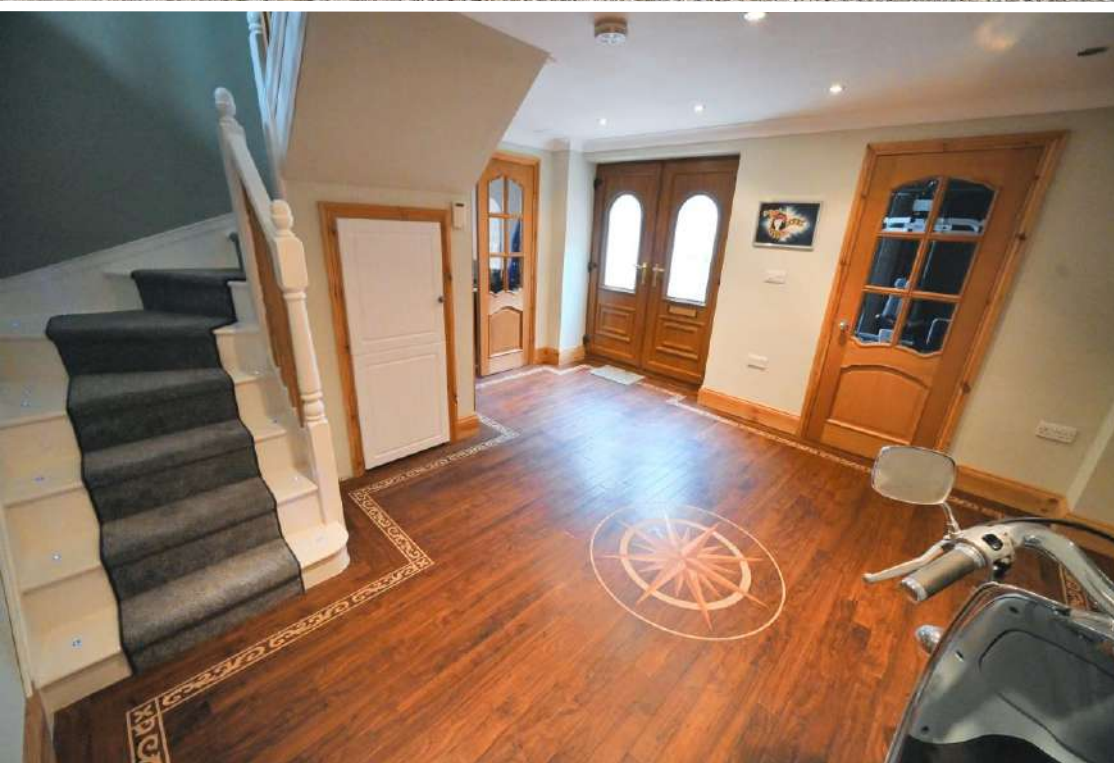
Fitted with a bespoke white suite comprising corner spa bath with hand held shower spray, low level WC, pedestal wash hand basin, feature ceramic tiled walls & flooring, coved ceiling and double glazed opaque window to side.

Rear Garden: Measuring at approx. 150ft long, the mature rear garden is fully stocked maintaining the maximum privacy and includes a large full width decked terrace with matching balustrades & railings, vast lawn, a variety of shrubs & trees, surrounding fencing and large timber workshop/ garden stores at rear. The garden also includes a 4ft deep fish pool with surrounding rockery, in front of the **Summer House: 10'6" (3.20m) x 10'6" (3.20m)** Power sockets, recessed ceiling spot lighting, laminate flooring, double glazed window & double doors, separate WC and open porch at side.

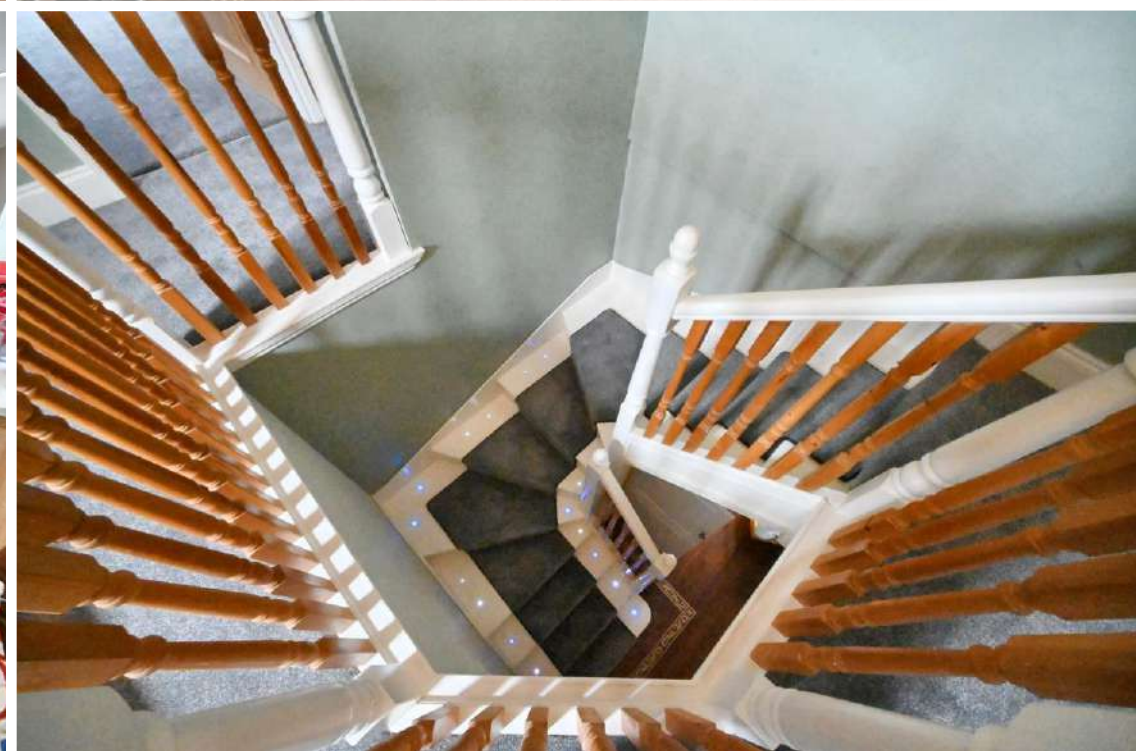
IMPORTANT NOTICE: Every care has been taken with the preparation of these Particulars but they are for general guidance only and complete accuracy cannot be guaranteed. Areas, measurements and distances are approximate and the text, photographs and plans are for guidance only. If there is any point which is of particular importance please contact us to discuss the matter and seek professional verification prior to exchange of contracts.





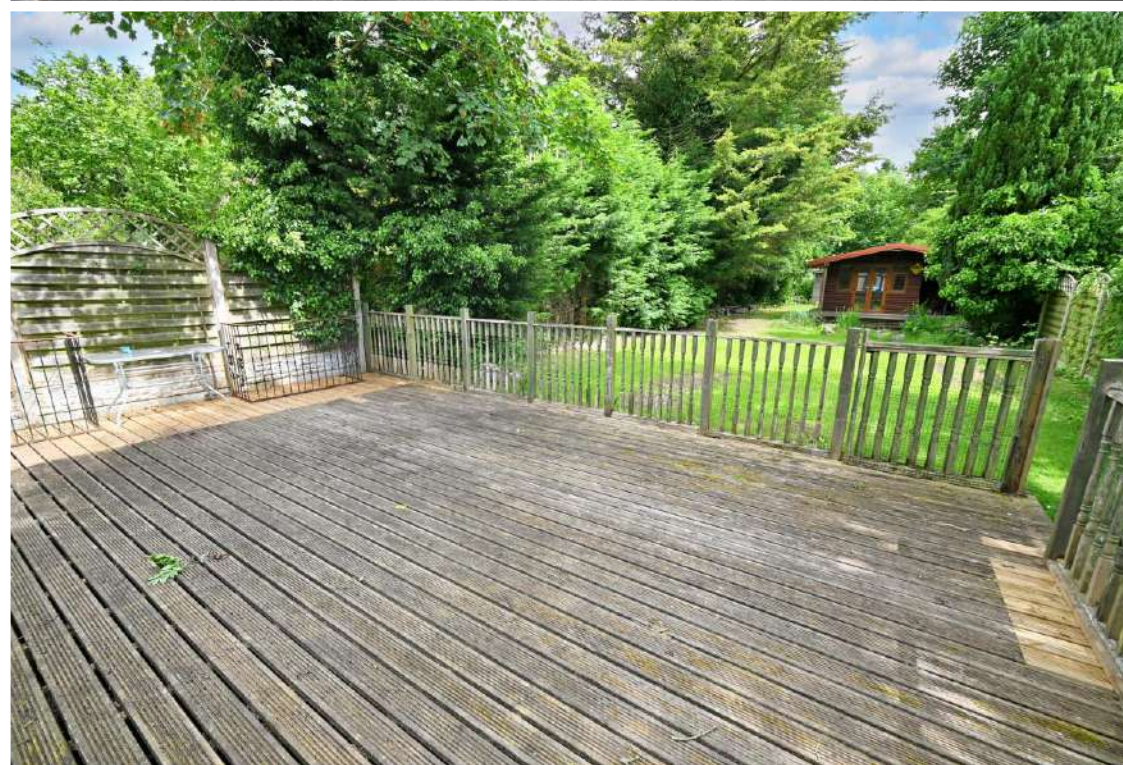
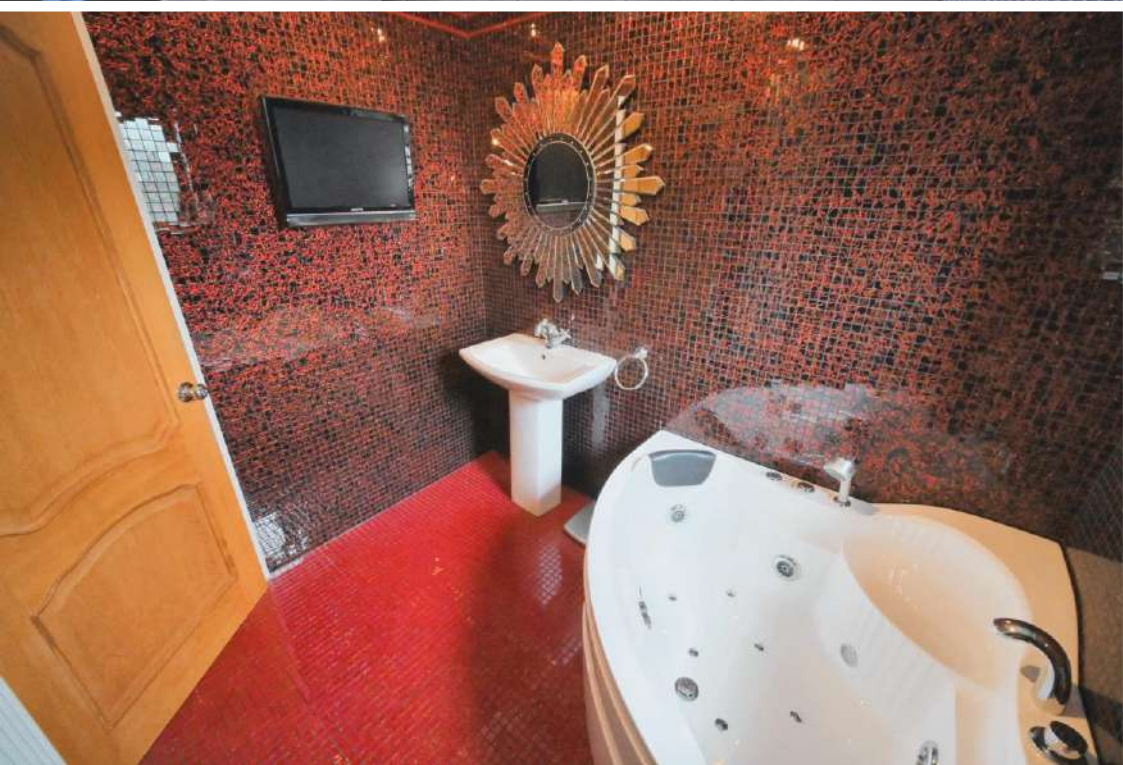






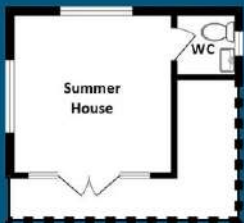




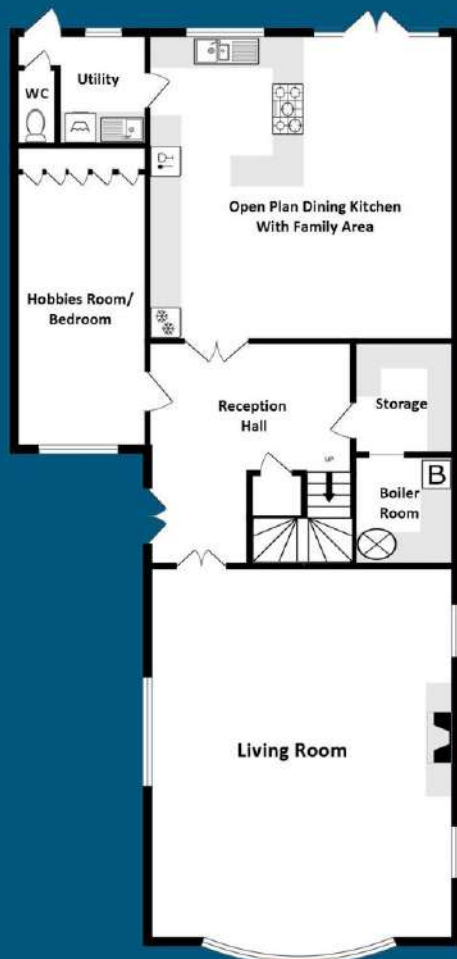




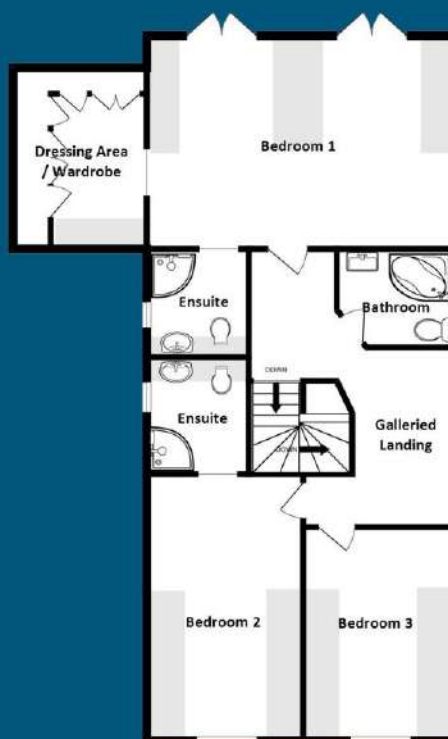




**Total Floor Area: 2325sq feet
(216.0sq metres) Approx.**



Ground Floor
Approx.: 1356sq feet
(126.0sq metres)



First Floor
Approx.: 969sq feet
(90.0sq metres)



PROPERTY MISDESCRIPTION ACT 1991

The Agent has not tested any apparatus, equipment, fixtures and fittings or services and so cannot verify that they are in working order or fit for the purpose. A buyer is advised to obtain verification from their solicitor or surveyor.

MISDESCRIPTIONS ACT 1967 – CONDITIONS UNDER WHICH THE ATTACHED PARTICULARS ARE ISSUED.

Thomas G Harvey for themselves and for the vendors of this property whose agents they are, give notice that:-

1. The particulars do not constitute any part of an offer or contract.
2. All statements contained in these particulars as to this property are made without responsibility on the part of Thomas G Harvey & Company or the vendor.
3. None of the statements contained in these particulars as to this property are to be relied on as statements of representations of fact.
4. Any intending purchaser must satisfy himself by inspection or otherwise as to the correctness of each of the statements contained in these particulars.
5. The vendor does not make or give, and neither Thomas G Harvey & Company, nor any person in their employment has any authority to make or give representation or warranty in relation to this property.