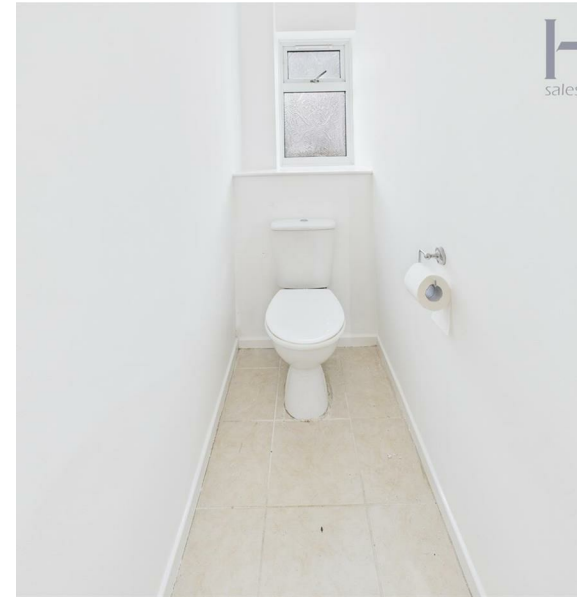


# Ingleside Drive, Hertfordshire, SG1 4RF

## £1,450 Per Month

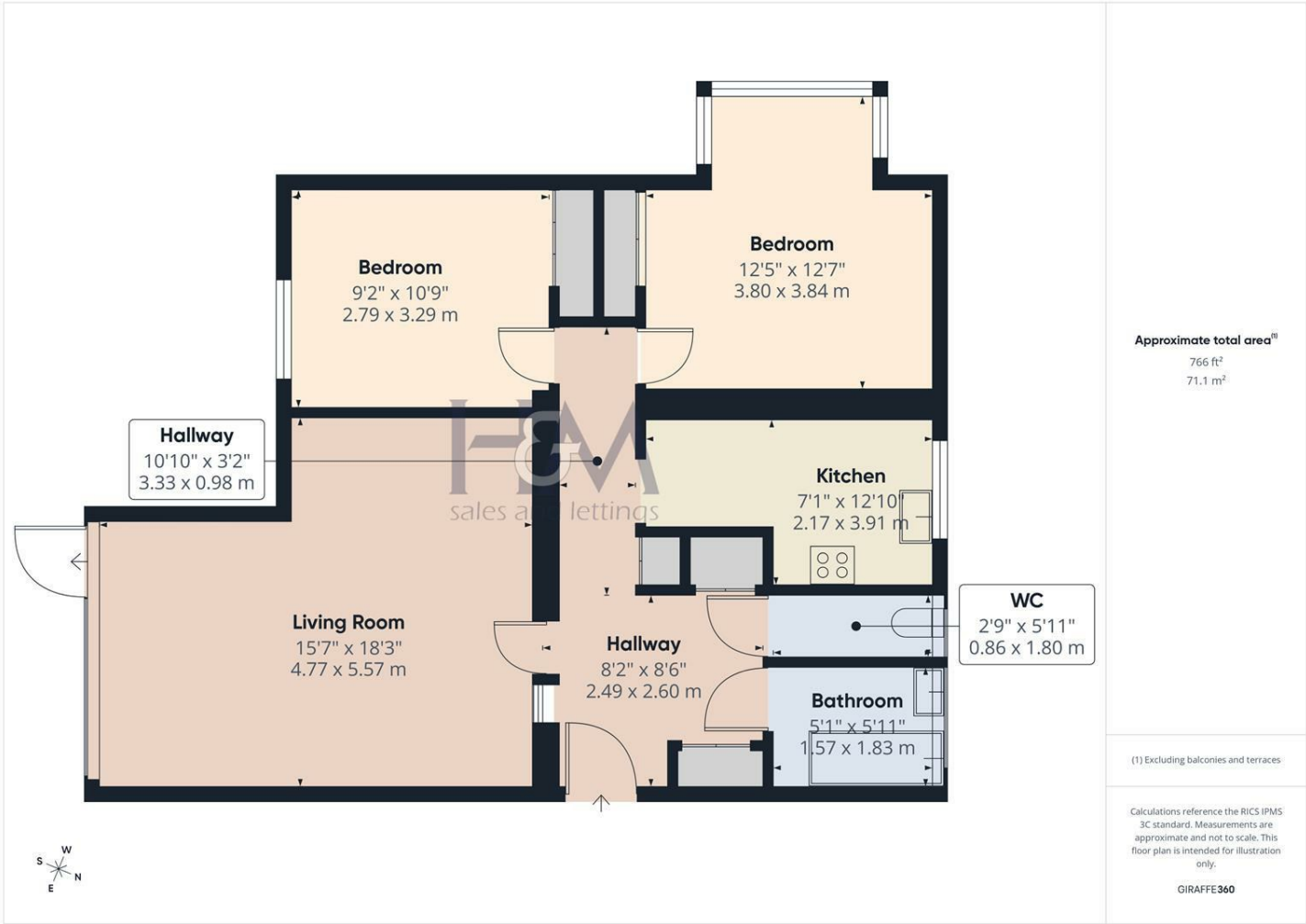
**H&M**  
sales and lettings



We are delighted to offer this tow bedroom first floor apartment to rent in Fovant Court. Have been recently decorated thought out along with refurbishment of the common areas including telecom entry system this apartment is a must view. Benefiting from tow double bedroom with built in wardrobes, a nice size lounge diner with balcony and plenty of storage. Available from the 6th February 2026, call Homes and Mortgages on 01438 728444 to arrange your viewing.



86 High Street  
Stevenage  
Hertfordshire  
SG1 3DW  
01438 728444  
stevenage@homesandmortgages.co.uk



#### Energy Efficiency Rating

|   | Current                 | Potential |
|---|-------------------------|-----------|
| Very energy efficient - lower running costs |                         |           |
| (92 plus) A                                 |                         |           |
| (81-91) B                                   |                         |           |
| (69-80) C                                   |                         |           |
| (55-68) D                                   | 68                      | 69        |
| (39-54) E                                   |                         |           |
| (21-38) F                                   |                         |           |
| (1-20) G                                    |                         |           |
| Not energy efficient - higher running costs |                         |           |
| England & Wales                             | EU Directive 2002/91/EC |           |