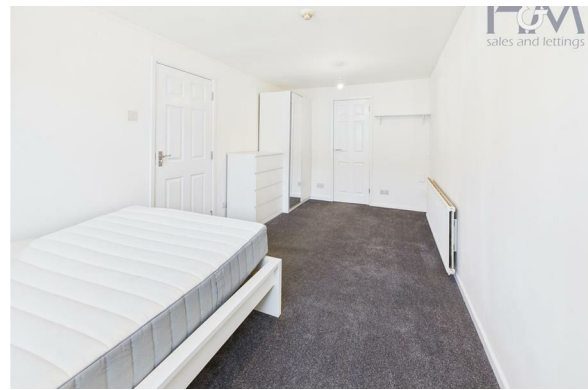
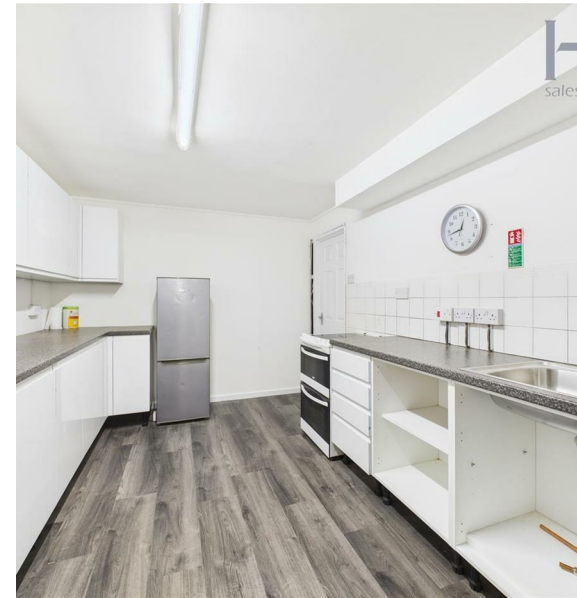


Canterbury Way, Stevenage, SG1 4LG

£2,500 Per Calendar Month

H&M
sales and lettings

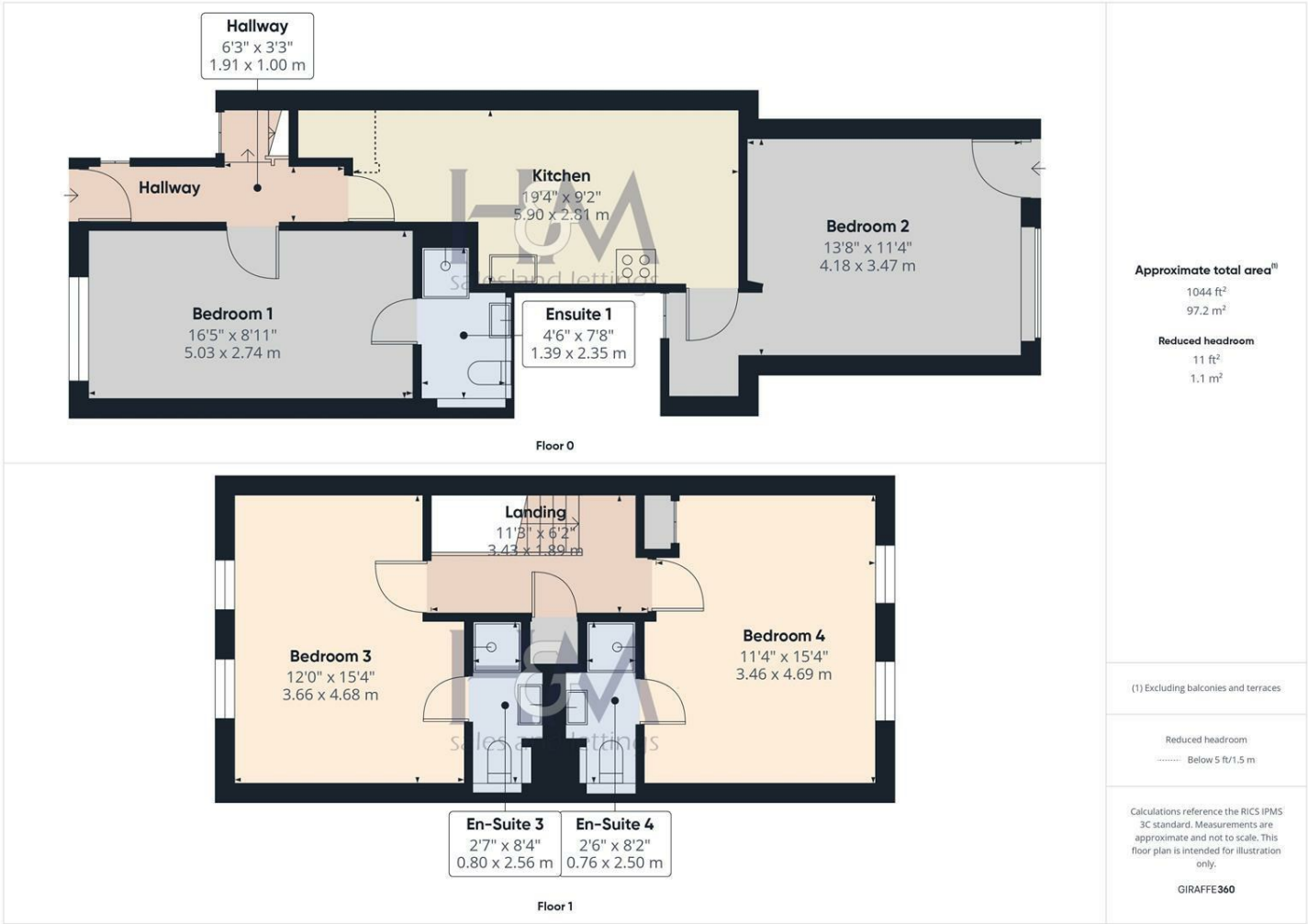


Ideal for Sharers. Homes & Mortgages are pleased to bring to the market this spacious four-bedroom HMO property, located on Canterbury Way in the Saint Nicholas area of Stevenage. The accommodation comprises four generously sized double bedrooms, each with its own en-suite bathroom—two located on the ground floor and two on the first floor. The property also features a communal kitchen / dining area, ideal for shared living. The property has been updated with new kitchen units, fresh decoration, and new flooring throughout, along with brand-new furniture in all four rooms. Available from 25th October.



86 High Street
Stevenage
Hertfordshire
SG1 3DW
01438 728444

stevenage@homesandmortgages.co.uk



Energy Efficiency Rating		
	Current	Potential
Very energy efficient - lower running costs		
(92 plus) A		
(81-91) B		
(69-80) C		
(55-68) D		
(39-54) E		
(21-38) F		
(1-20) G		
Not energy efficient - higher running costs		
England & Wales		EU Directive 2002/91/EC