

# Rowland Road, Stevenage, Hertfordshire, SG1 1TE

## £995 PCM

**H&M**  
sales and lettings

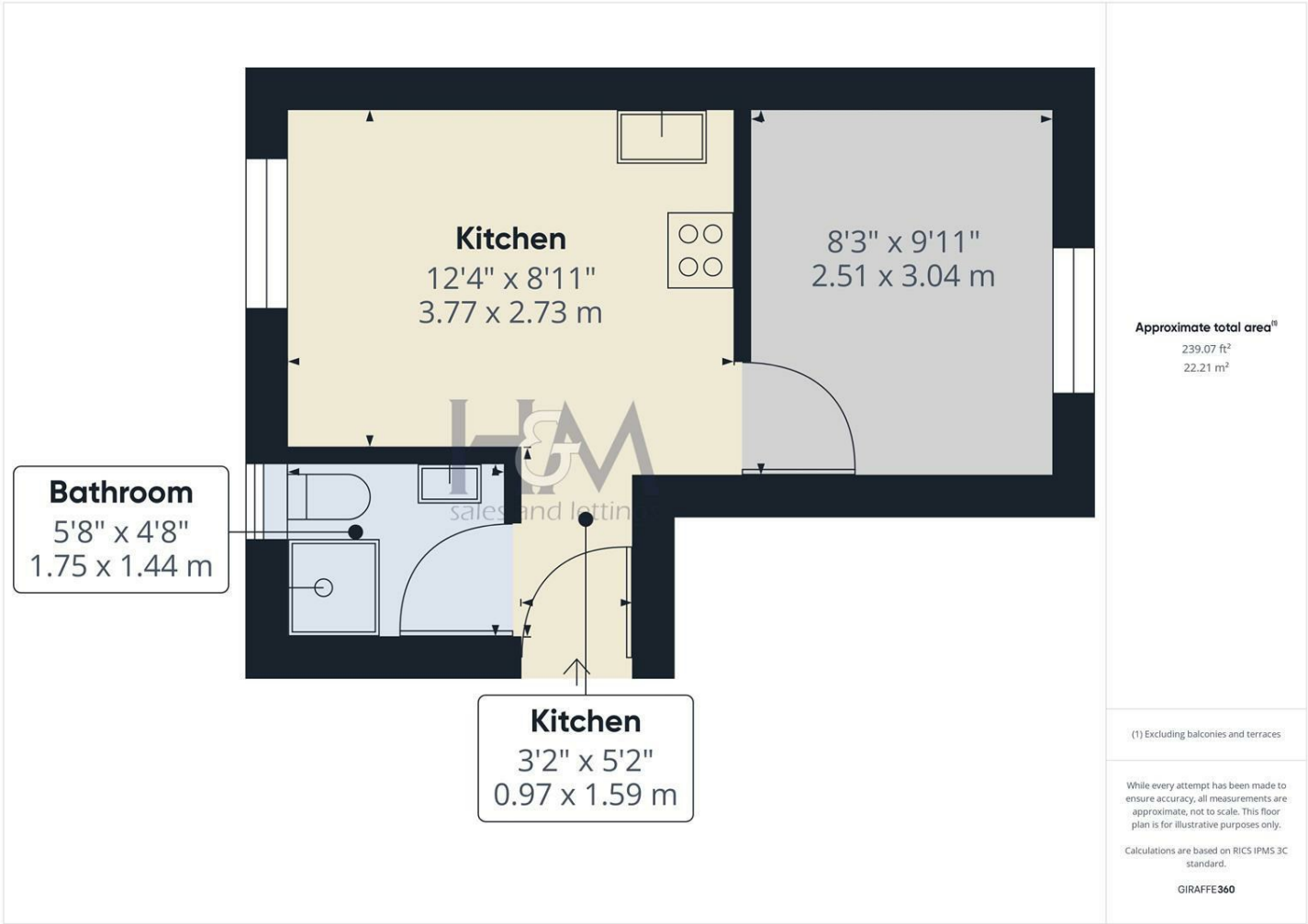


Homes and Mortgages are pleased to present this one-bedroom apartment, conveniently situated just a short walk from Stevenage Town Centre and the Railway Station. The property features an entrance hall, an open-plan lounge and kitchen, a bedroom, and a shower room. Externally, the apartment benefits from its own private garden. Available from the 20th of October. Contact us today to arrange a viewing.



86 High Street  
Stevenage  
Hertfordshire  
SG1 3DW  
01438 728444

stevenage@homesandmortgages.co.uk



Energy Efficiency Rating		
	Current	Potential
Very energy efficient - lower running costs		
(92 plus) A		
(81-91) B		
(69-80) C		
(55-68) D	66	66
(39-54) E		
(21-38) F		
(1-20) G		
Not energy efficient - higher running costs		
England & Wales		EU Directive 2002/91/EC