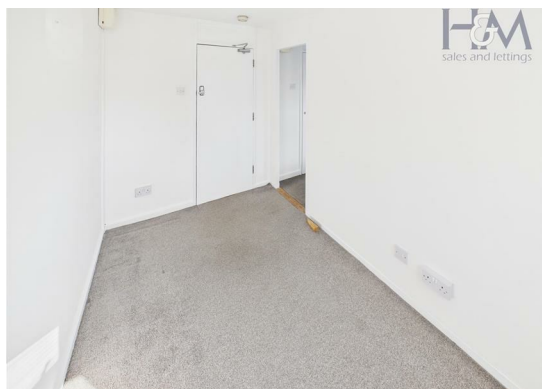


Ely Close, Stevenage, Hertfordshire, SG1 4NW

£600 PCM

H&M
sales and lettings



Homes and Mortgages are pleased to offer this impressive furnished double room set within a shared house in the Saint Nicholas area of Stevenage. The double room has a sleeping area and a separate sitting area. There is a communal kitchen that is shared with the other residents. The room has a shared bathroom with one other resident on the first floor. The rent is inclusive of utility bills. Single-working professional only. Available End of October. Call us today to arrange a viewing!



86 High Street
Stevenage
Hertfordshire
SG1 3DW
01438 728444

stevenage@homesandmortgages.co.uk

