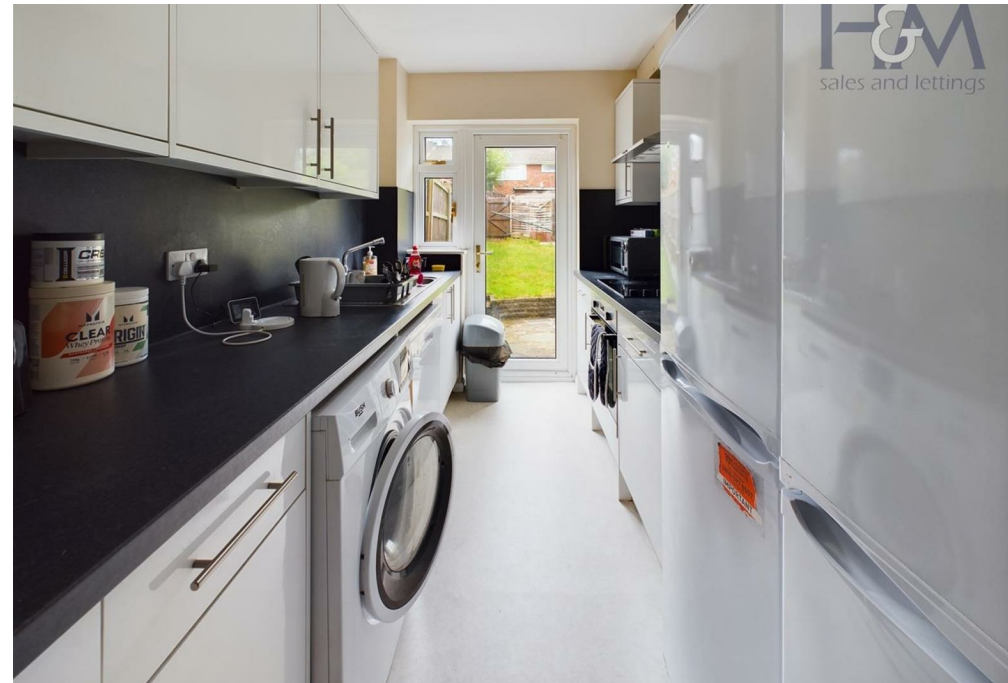
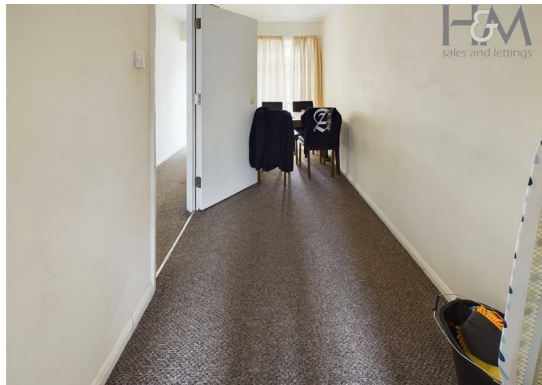
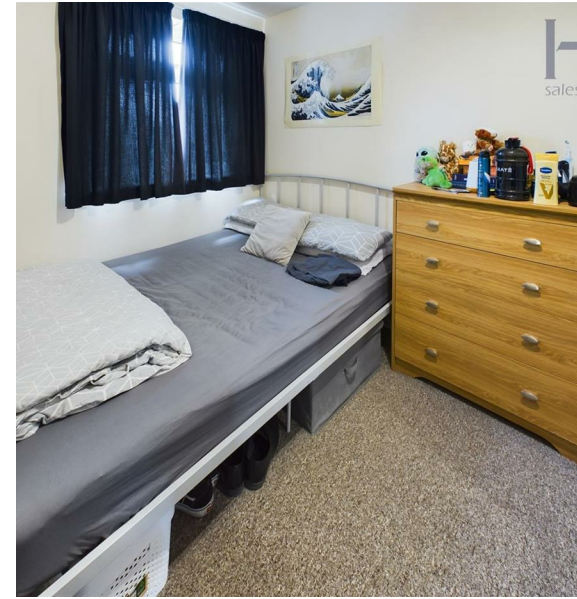


# Woburn Close, Stevenage, Hertfordshire, SG2 8SW

## £2,500 PCM

**H&M**  
sales and lettings



**\*\*DON'T MISS OUT FACETIME/SKYPE VIEWINGS AVAILABLE\*\*** Suitable for **\*\*\*GSK/MBDA\*\*\*** interns. Four-bedroom shared house located in the Bragbury End area of Stevenage only 2.8 miles to GSK and 1.6 miles to Knebworth train station with direct line to London Kings Cross. Offered fully furnished including white goods. Call Homes and Mortgages today to arrange your viewing! Available from the 1st of September 2025.



86 High Street  
Stevenage  
Hertfordshire  
SG1 3DW  
01438 728444

[stevenage@homesandmortgages.co.uk](mailto:stevenage@homesandmortgages.co.uk)

#### Energy Efficiency Rating

	Current	Potential
Very energy efficient - lower running costs		
(92 plus) <b>A</b>		
(81-91) <b>B</b>		<b>81</b>
(69-80) <b>C</b>	<b>66</b>	
(55-68) <b>D</b>		
(39-54) <b>E</b>		
(21-38) <b>F</b>		
(1-20) <b>G</b>		
Not energy efficient - higher running costs		
<b>England &amp; Wales</b>	EU Directive 2002/91/EC 