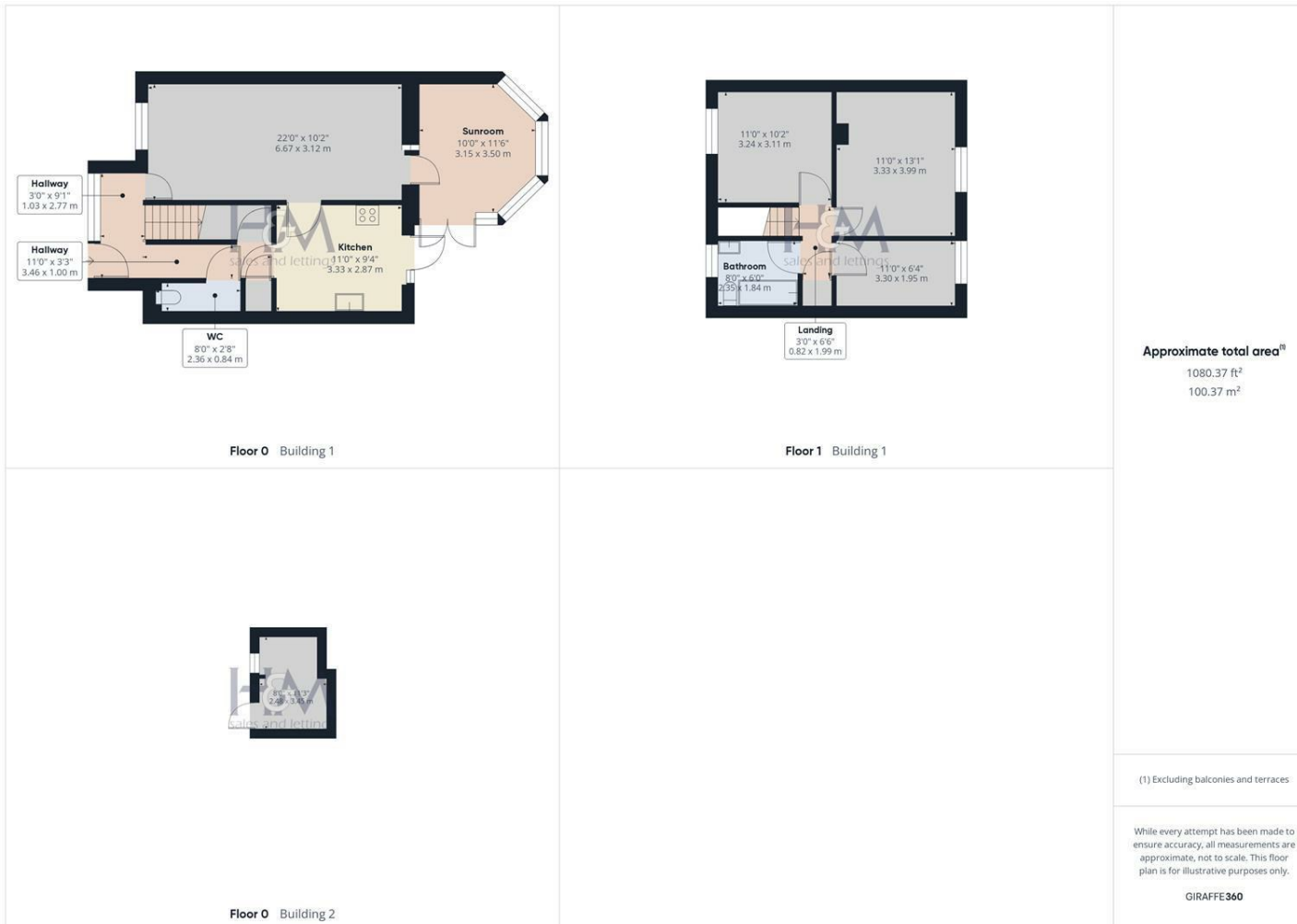


Hillside, Stevenage, Hertfordshire, SG1 1PX

£1,600 PCM



Homes and Mortgages are pleased to welcome this three-bedroom family home in the Bedwell area of Stevenage only 1.1 miles from the mainline station. As you walk through the front door you are greeted with an entrance hall which leads into the large living and dining area offering the perfect living space for a family. The rest of the ground includes a conservatory room, fully-fitted kitchen, downstairs toilet and a well-presented rear garden with outbuilding. On the first floor, you will find two double bedrooms, one single bedroom and a family bathroom. The property is further complimented with a driveway to the front. Available from the start of September. Call us to arrange a viewing!



86 High Street
Stevenage
Hertfordshire
SG1 3DW
01438 728444

stevenage@homesandmortgages.co.uk

Energy Efficiency Rating

	Current	Potential
Very energy efficient - lower running costs		
(92 plus) A		
(81-91) B		
(69-80) C		
(55-68) D	66	78
(39-54) E		
(21-38) F		
(1-20) G		
Not energy efficient - higher running costs		
England & Wales	EU Directive 2002/91/EC 