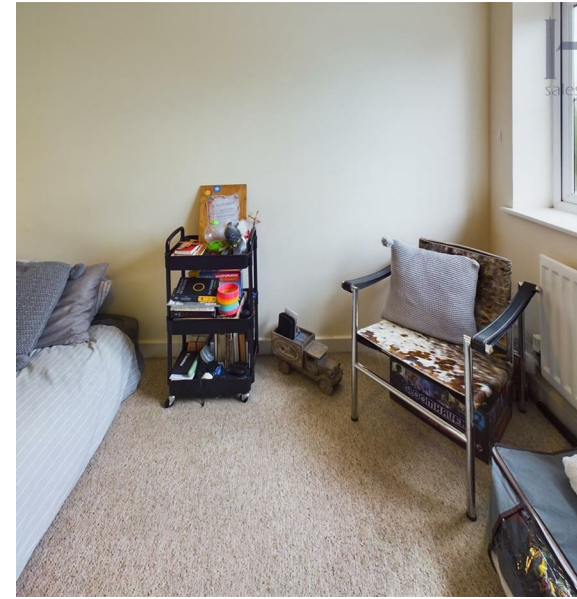


Great Ashby Way, Stevenage, SG1 6DT

£1,750 PCM



A three-bedroom town house situated in the popular area of Great Ashby situated close to local amenities and Round Diamond Junior School. The accommodation comprises an entrance hall, downstairs WC, lounge, kitchen/diner, three good sized bedrooms with en-suite to master bedroom and further family bathroom. Outside the property benefits from a garage and driveway for two cars and an enclosed rear garden. Available from the middle-end of June. Call us to arrange a viewing today!



86 High Street
 Stevenage
 Hertfordshire
 SG1 3DW
 01438 728444

stevenage@homesandmortgages.co.uk

Energy Efficiency Rating

	Current	Potential
<i>Very energy efficient - lower running costs</i>		
(92 plus) A		
(81-91) B		
(69-80) C		
(55-68) D		
(39-54) E		
(21-38) F		
(1-20) G		
<i>Not energy efficient - higher running costs</i>		
England & Wales	EU Directive 2002/91/EC 