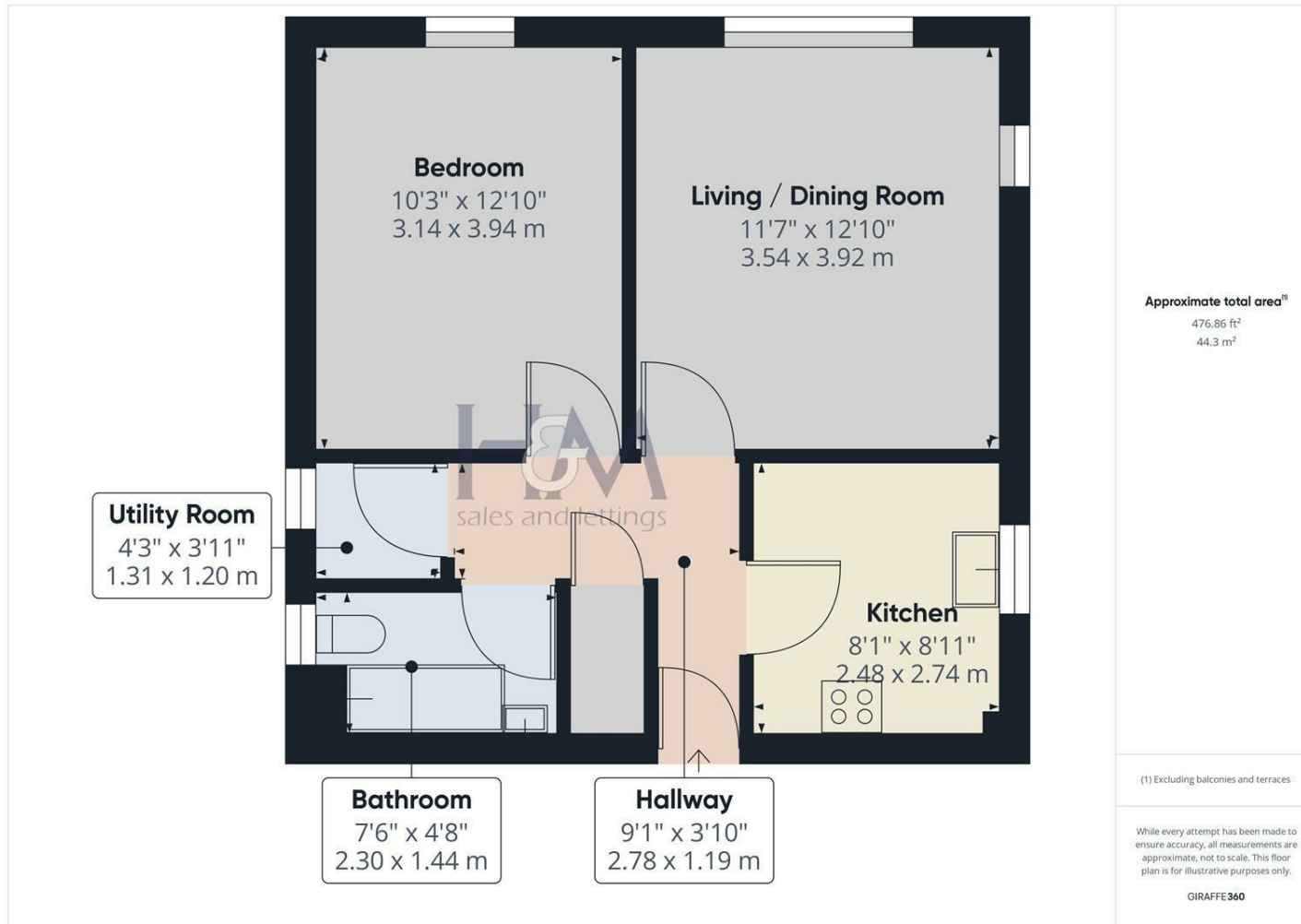


# Baron Court, Stevenage, Hertfordshire, SG1 4RS

£1,095 PCM



Homes and Mortgages are pleased to welcome to the market, this Ground-floor One-bedroom apartment located only a 5-minute walk away from Lister Hospital. The property includes an entrance hall, spacious living/dining room, double bedroom, four-piece bathroom suite and a fitted kitchen with white goods. The flat is offered on an unfurnished basis and will be available from the end of April.



86 High Street  
Stevenage  
Hertfordshire  
SG1 3DW  
01438 728444

stevenage@homesandmortgages.co.uk

**Energy Efficiency Rating**

	Current	Potential
<i>Very energy efficient - lower running costs</i>		
(92 plus) <b>A</b>		
(81-91) <b>B</b>		
(69-80) <b>C</b>		
(55-68) <b>D</b>		
(39-54) <b>E</b>		
(21-38) <b>F</b>		
(1-20) <b>G</b>		
<i>Not energy efficient - higher running costs</i>		

**England & Wales**

EU Directive  
2002/91/EC