



Luna House, Tempus Wharf, Shad Thames, SE16

Price **£510 per week** | Furnished



Luna House, Tempus Wharf, Shad Thames, SE16



1 Bedroom



1 Bathroom



1 Reception



Daytime Concierge



Riverside Development



Local Amenities



0.4 MI Berdmonsey

Luxury one bedroom apartment set in this popular riverside development, close to fantastic amenities of London Bridge and Tower Bridge, Shad Thames SE16. Designer furnished throughout, this property comprises an elegant living area with wood flooring and floor-to-ceiling windows, a well appointed open-plan kitchen with integrated appliances, a spacious bedroom with fitted wardrobe and a modern bathroom.

Residents benefit from concierge services, lift access and local transport links. Commutes to key locations such as Canary Wharf and Stratford take

less than 10 minutes from Bermondsey station via Jubilee line. Butlers Wharf is also close by, hosting an array of bars and restaurants.

Local Authority:

Southwark

Council Tax Band:

C

EPC:

C

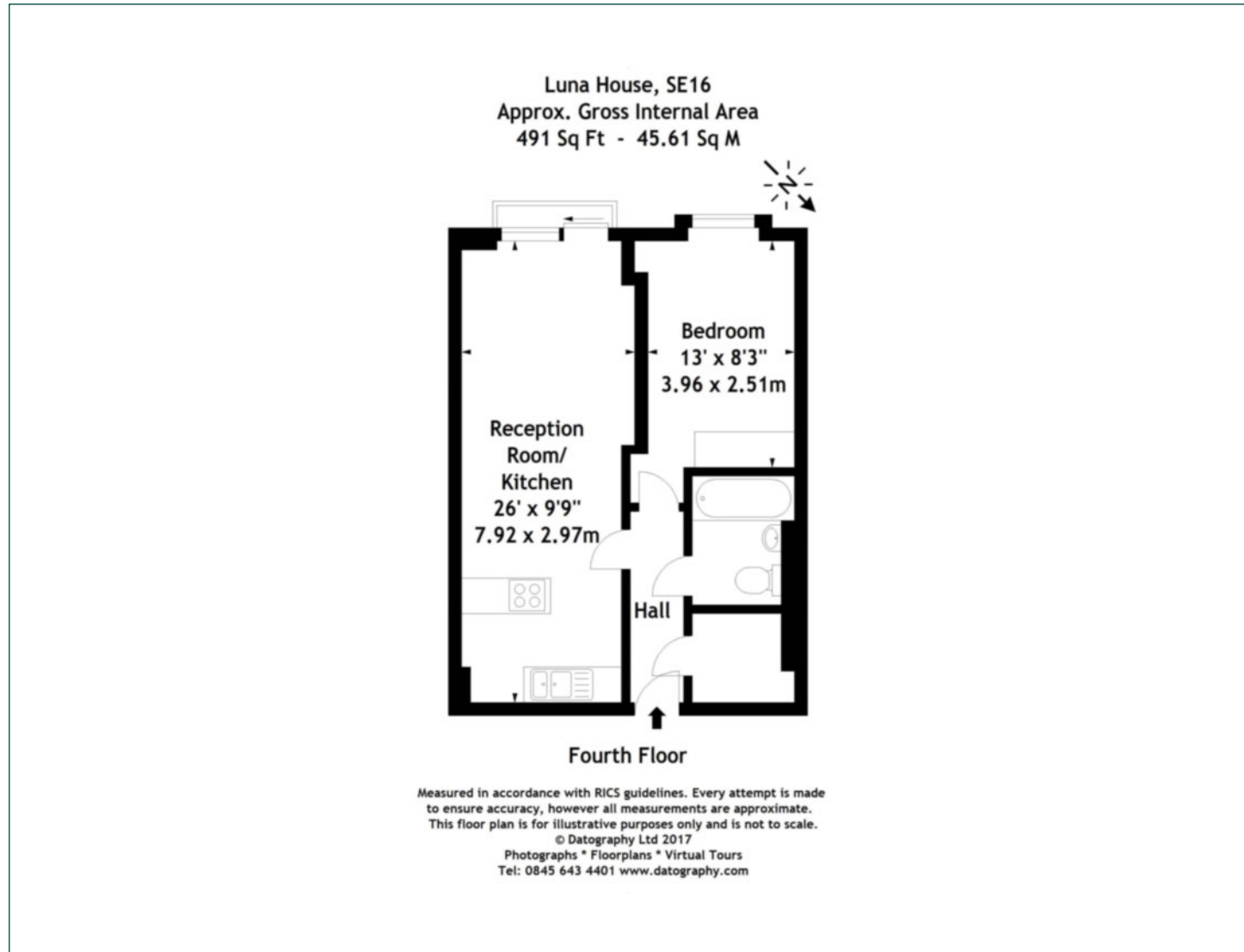
Security deposit:

equivalent to 5 weeks' rent



Floorplan

491 sq ft | 45.61 sq m



Elephant & Castle

One The Elephant, 5 St Gabriel Walk, London, SE1 6FG

Lettings

020 3869 2888 | eandc.lettings@chaseevans.com

We're here to help.

IMPORTANT NOTICE - These particulars have been prepared in good faith and they are not intended to constitute part of an offer or contract. We have not performed a structural survey on this property and the services, appliances and specific fittings have not been tested. All photographs, measurements, floor plans and distances referred to are given as a guide and should not be relied upon.

chaseevans.com

 Chase Evans