

## Godwin House, One Tower Bridge, Still Walk, Southwark, SE1

Price **£965 per week** | Furnished



# Godwin House, One Tower Bridge, Still Walk, Southwark, SE1



2 Bedrooms



2 Bathrooms



1 Reception



2 Balconies



Gymnasium



Local Amenities



24-Hour Concierge



0.6 MI London Bridge

Luxury two bedrooms, two bathrooms apartment set within One Tower Bridge, Southwark SE1. This apartment boasts an inviting dual-aspect living space with full-height windows leading to two private balconies with direct views of The Shard and Tower Bridge, a stylish open-plan kitchen with fully integrated appliances including wine cooler and coffee machine, two spacious double bedrooms with built-in wardrobes and master en suite, and a further contemporary family bathroom suite.

One Tower Bridge offers 24-hour concierge, swimming pool, gymnasium and business facilities. The property is located a 9-min walk from London Bridge Underground for Northern, Jubilee line and National Rail services and 12-min walk from Tower Hill for District and Circle Line journeys. From these

stations Victoria can be reached in 15 mins and Kings Cross St Pancras in 20 mins.

One Tower Bridge is situated in one of London's most prestigious riverside locations, offering residents easy access to a vibrant array of amenities. Just steps away are iconic landmarks like the Tower of London and Tower Bridge, giving a glimpse into the city's rich history. Residents can also enjoy nearby dining options, including The Ivy Tower Bridge, Restaurant Story, and casual spots like Coppa Club. Cultural attractions are plentiful with The Bridge Theatre and the White Cube gallery. For shopping, residents can explore Borough Market's fresh produce and gourmet treats. The area also offers beautiful green spaces such as Potters Fields Park, perfect for relaxing with stunning Thames views.

**Local Authority:**

Southwark

**Council Tax Band:**

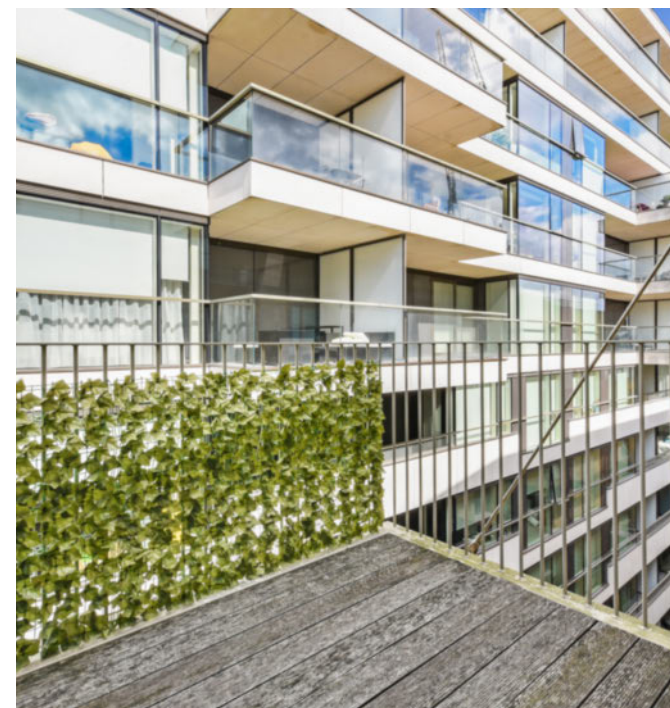
D

**EPC:**

B

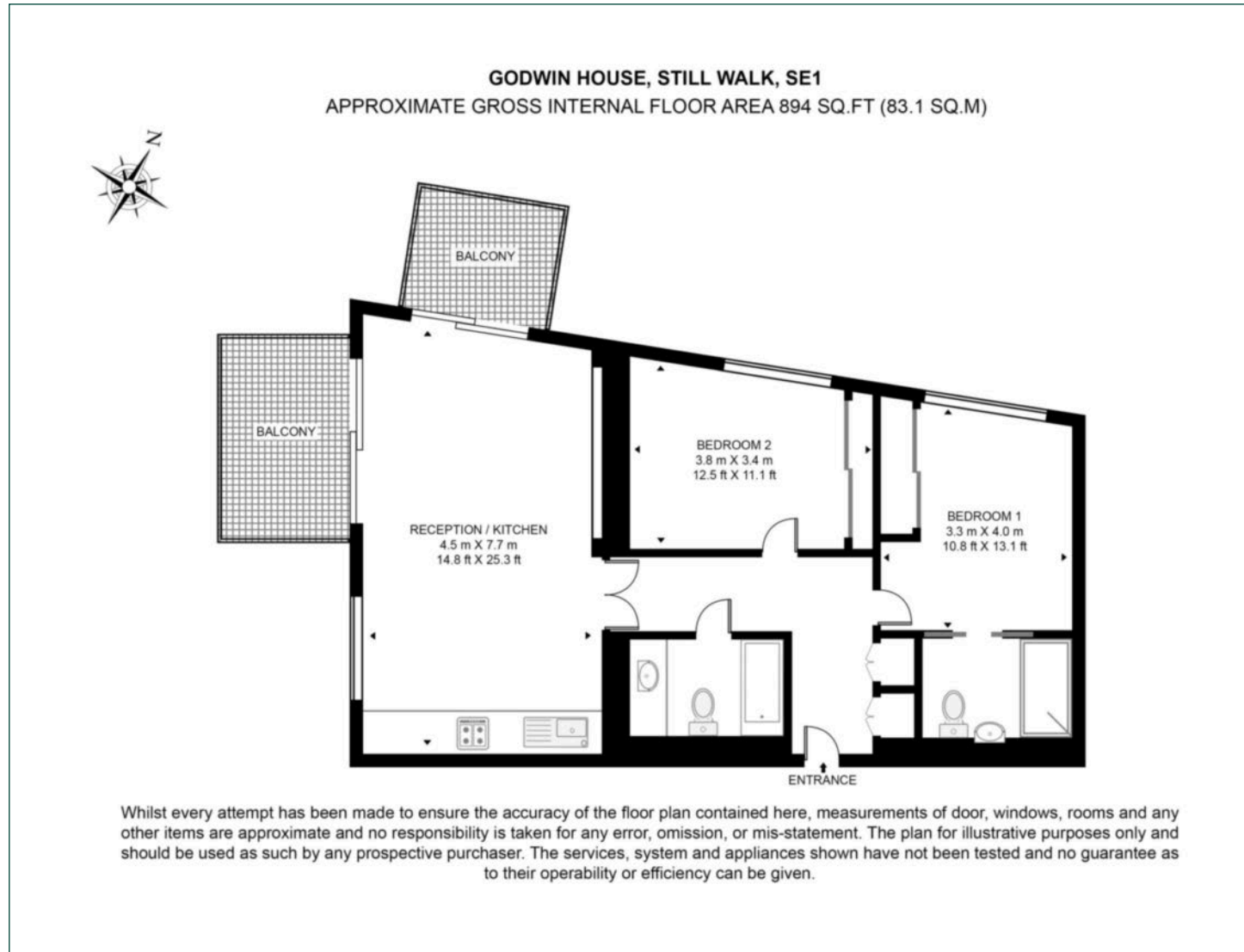
**Security deposit:**

equivalent to 5 weeks' rent



# Floorplan

894 sq ft | 83.1 sq m



## Elephant & Castle

One The Elephant, 5 St Gabriel Walk, London, SE1 6FG

## Lettings

020 3869 2888 | [eandc.lettings@chaseevans.com](mailto:eandc.lettings@chaseevans.com)

## We're here to help.

IMPORTANT NOTICE - These particulars have been prepared in good faith and they are not intended to constitute part of an offer or contract. We have not performed a structural survey on this property and the services, appliances and specific fittings have not been tested. All photographs, measurements, floor plans and distances referred to are given as a guide and should not be relied upon.

[chaseevans.com](http://chaseevans.com)

 Chase Evans