

TWO BEDROOMS / TWO BATHS

874 SQ. FT INTERNAL AREA

PRIVATE BALCONY

24 HOUR CONCIERGE

OPPOSITE LEISURE CENTRE

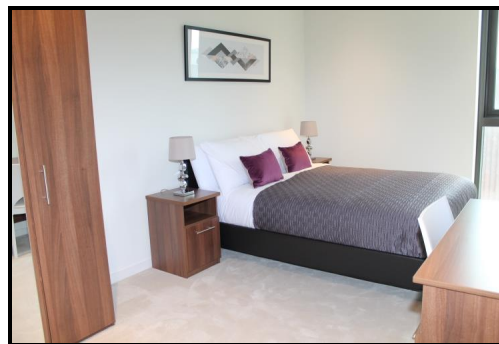
A luxury two bedroom apartment in Elephant & Castle's iconic One The Elephant landmark, rising 37 floors above Elephant & Castle, SE1. Our client's property includes an open plan living space, fitted kitchen with integrated appliances, wood flooring, modern bathroom décor, fitted wardrobe space in both bedrooms, master ensuite and a private balcony offering views across the surround area.

£730,000 (Leasehold)



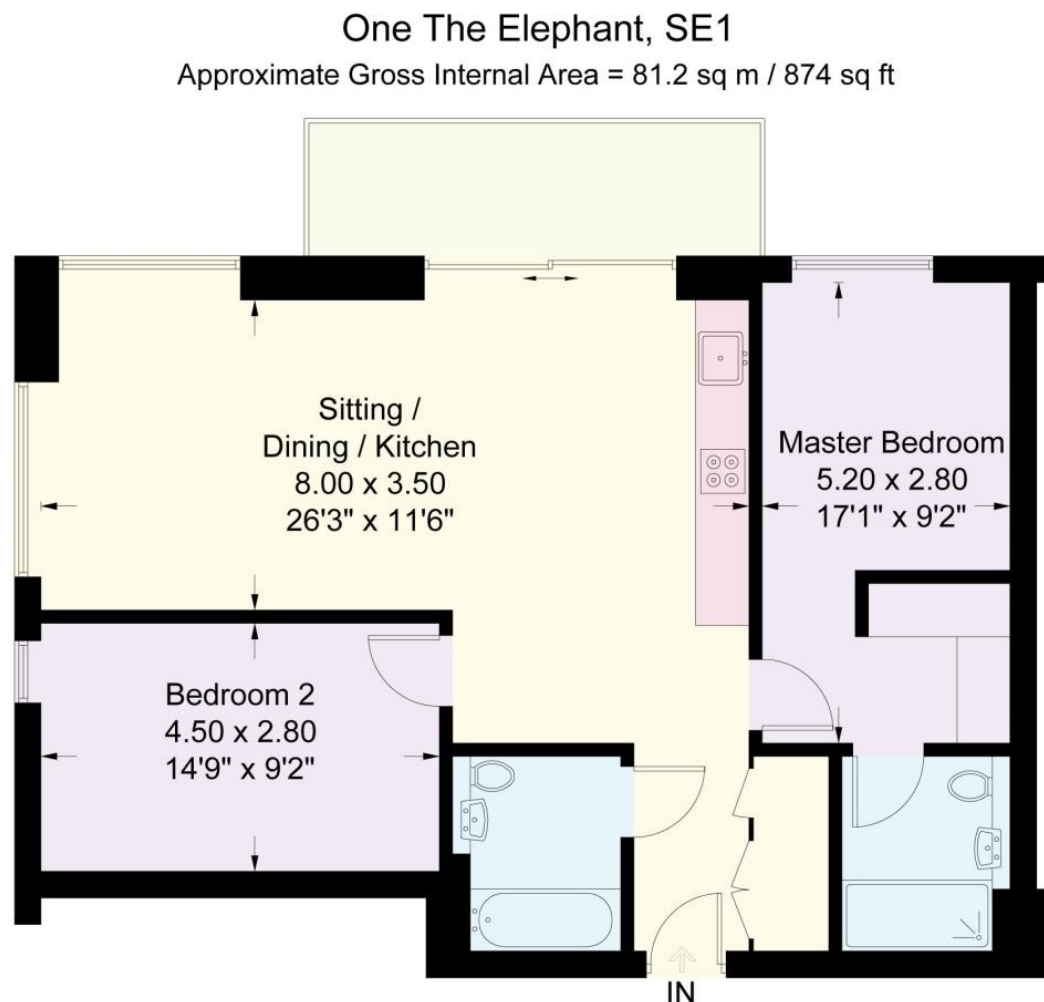
THE TOWER, ONE THE ELEPHANT, ELEPHANT & CASTLE SE1

£730,000 (Leasehold)



THE TOWER, ONE THE ELEPHANT, ELEPHANT & CASTLE SE1

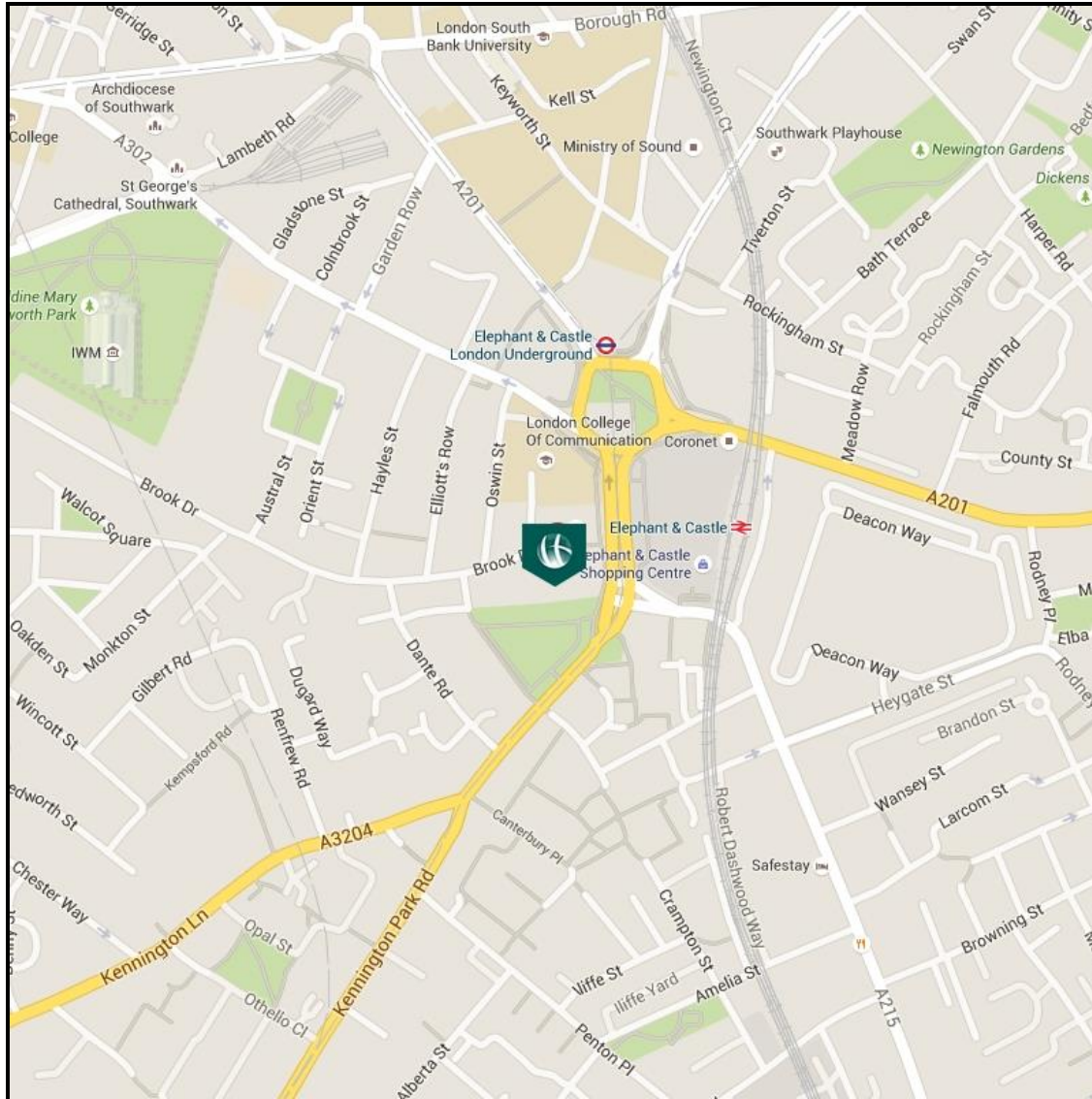
£730,000 (Leasehold)



Chase Evans make every attempt to ensure accuracy, however all measurements are approximate.
All aspects of this floor plan are for illustrative purposes only and not to scale. Errors and omissions excepted (E&OE).

THE TOWER, ONE THE ELEPHANT, ELEPHANT & CASTLE SE1

£730,000 (Leasehold)



Energy Efficiency Rating			Environmental Impact Rating		
	Current	Potential		Current	Potential
Very energy efficient - lower running costs			Very environmentally friendly - lower CO ₂ emissions		
(92-100) A			(92-100) A		
(81-91) B	84	84	(81-91) B	91	91
(69-80) C			(69-80) C		
(55-68) D			(55-68) D		
(39-54) E			(39-54) E		
(21-38) F			(21-38) F		
(1-20) G			(1-20) G		
Not energy efficient - higher running costs			Not environmentally friendly - higher CO ₂ emissions		
England & Wales			England & Wales		
EU Directive 2002/91/EC			EU Directive 2002/91/EC		
The energy efficiency rating is a measure of the overall efficiency of a home. The higher the rating the more energy efficient the home is and the lower the fuel bills will be.			The environmental impact rating is a measure of a home's impact on the environment in terms of carbon dioxide (CO ₂) emissions. The higher the rating the less impact it has on the environment.		

View Property

Contact Information:

Elephant and Castle Office

5 St Gabriel Walk, London, SE1 6FS

Tel: 020 3869 2888

Email: onetheelephant@chaseevans.co.uk