



O-Central, Crampton Street, Elephant & Castle, SE17

Price **£750 per week** | Furnished



O-Central, Crampton Street, Elephant & Castle, SE17



3 Bedrooms



1 Bathroom



1 Reception



Balcony



Local Amenities



Concierge Service

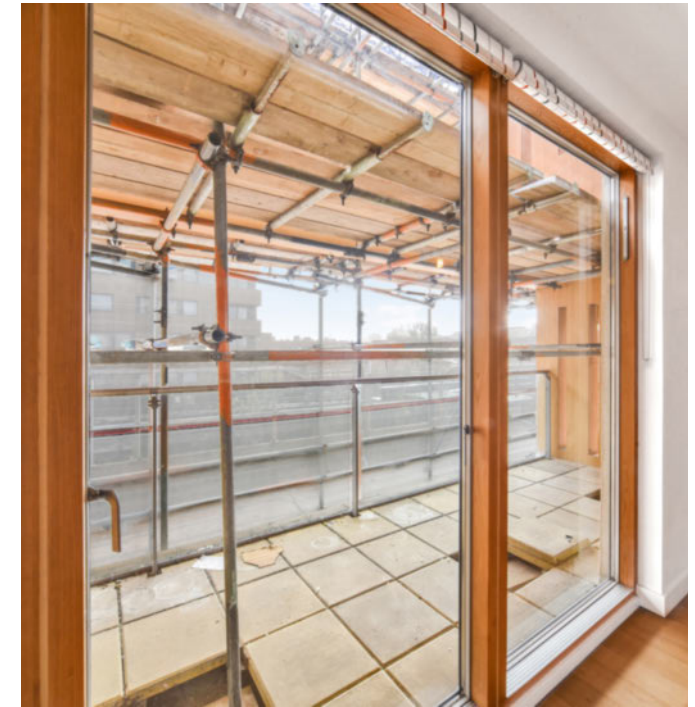


0.4 MI Elephant & Castle

A spacious three bedroom apartment set within the O Central development located near to Elephant and Castle's transport links and amenities. The apartment includes an open plan living area, fitted kitchen with integrated appliances, wood flooring, three double bedrooms, good size storage and a stylish bathroom suite.

The development offers 24-hour concierge service. There are several amenities located nearby including restaurants, cafés and the Elephant and Castle Shopping Centre. The development is located half a mile (or around a 10min walk) from

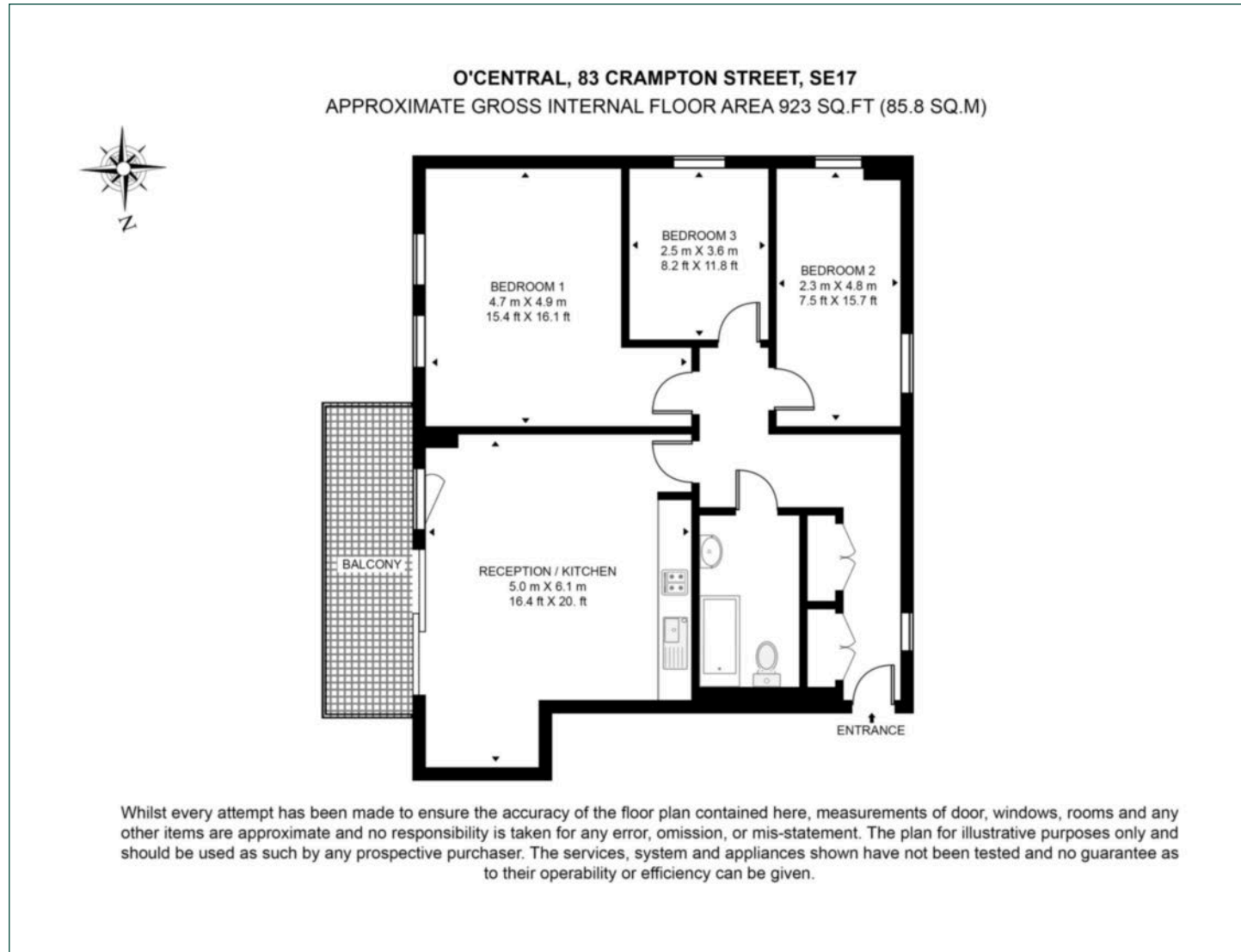
Elephant & Castle National Rail and Underground stations, providing Underground and Rail services for commutes towards the City and West End, serviced by Thameslink, Southeastern, Bakerloo and Northern Line.



Local Authority:	Southwark Council
Council Tax Band:	D
EPC:	C
Security deposit:	equivalent to 5 weeks' rent

Floorplan

923 sq ft | 85.8 sq m



Elephant & Castle

One The Elephant, 5 St Gabriel Walk, London, SE1 6FG

Lettings

020 3869 2888 | eandc.lettings@chaseevans.com

We're here to help.

IMPORTANT NOTICE - These particulars have been prepared in good faith and they are not intended to constitute part of an offer or contract. We have not performed a structural survey on this property and the services, appliances and specific fittings have not been tested. All photographs, measurements, floor plans and distances referred to are given as a guide and should not be relied upon.

chaseevans.com

 Chase Evans